



1 HERRICK HALL - BASEMENT LEVEL **2**
SCALE: 1" = 15'

Dec 16, 2016 - 9:14am - 109_A2.dwg
H:\Herrick Hall\Building Plan - Book Copy\



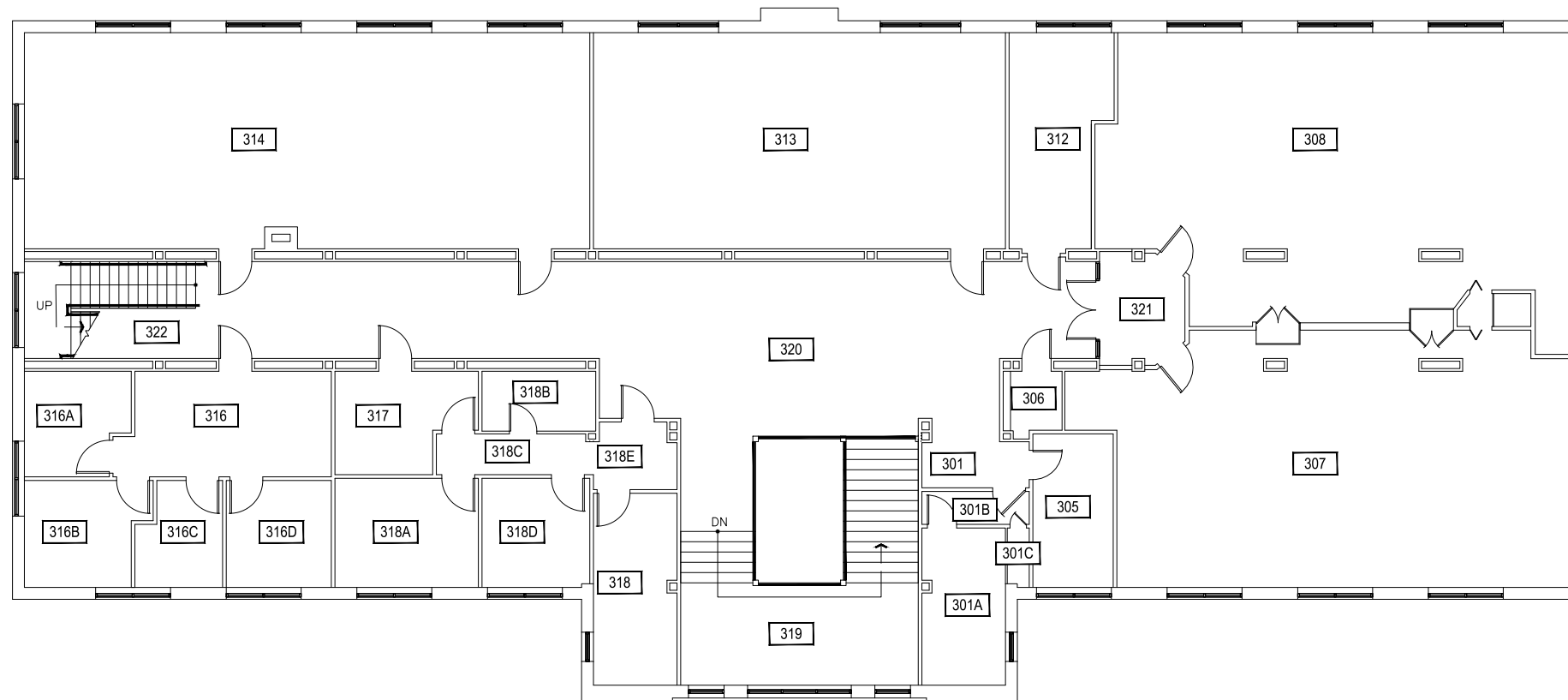
1 HERRICK HALL - SECOND LEVEL
SCALE: 1" = 15'



M MONTANA
STATE UNIVERSITY
CAMPUS PLANNING,
DESIGN & CONSTRUCTION
BOZEMAN, MONTANA
PHONE: 406.994.5413 FAX: 406.994.5665

INDEX #
27
BUILDING #
109

Dec 16, 2016 - 9:14am - 109_A3.dwg
H:\Herrick Hall\Building Plan - Book Copy\



1

HERRICK HALL - THIRD LEVEL

SCALE: 1" = 15'



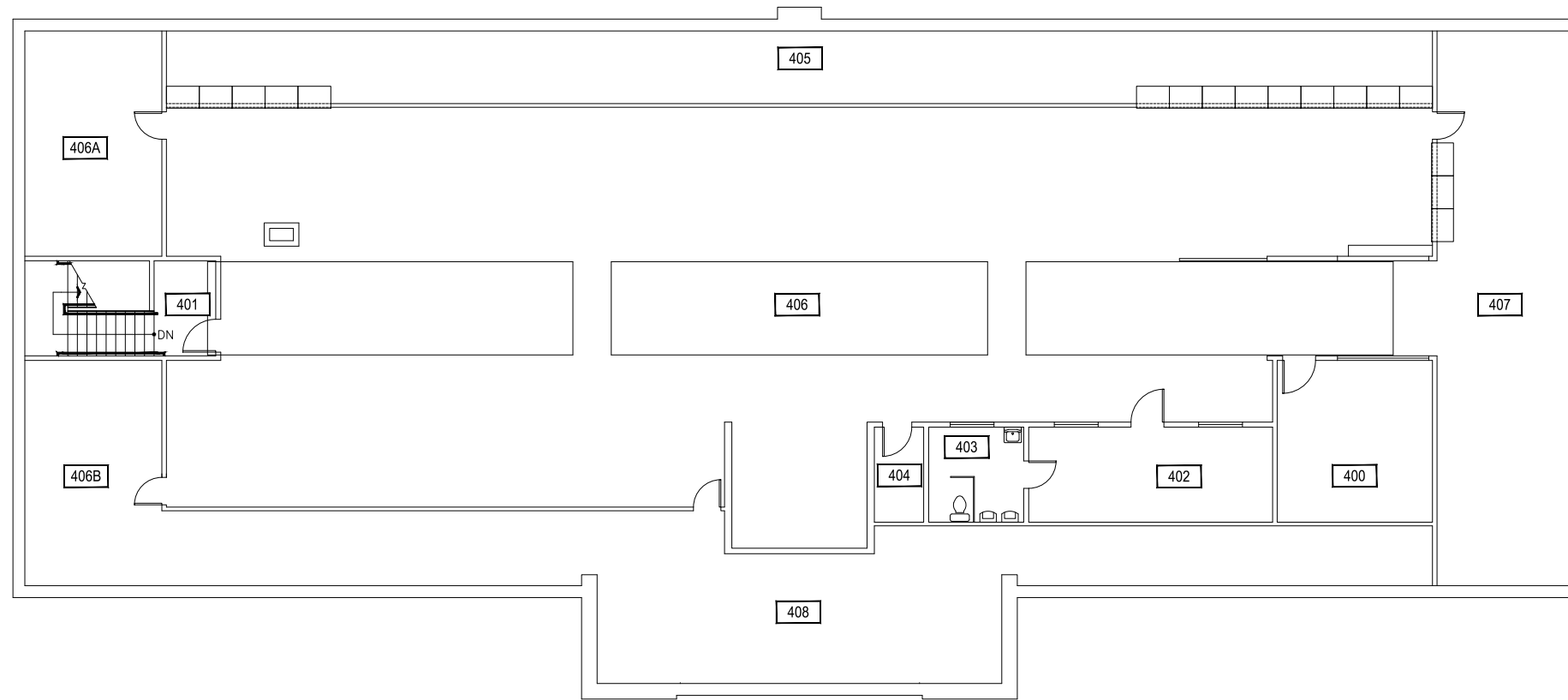
M MONTANA
STATE UNIVERSITY
CAMPUS PLANNING,
DESIGN & CONSTRUCTION
BOZEMAN, MONTANA
PHONE: 406.994.5413 FAX: 406.994.5665

INDEX #

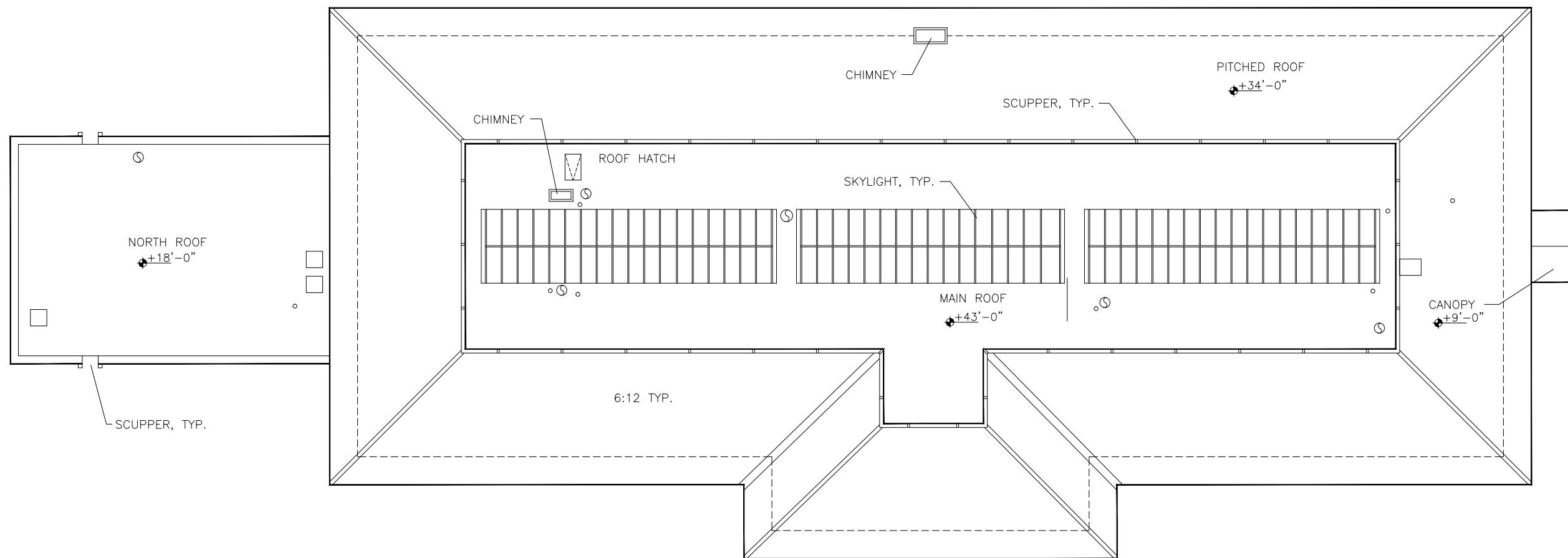
27

BUILDING #

109



1 HERRICK HALL - FOURTH LEVEL **2**
SCALE: 1" = 15'



Dec 16, 2016 - 9:14am - 109_A1R.dwg
 H:\Herrick Hall\Building Plan - Book Copy\

1
HERRICK HALL - ROOF LEVEL
 SCALE: 1" = 15'



M MONTANA STATE UNIVERSITY
 CAMPUS PLANNING,
 DESIGN & CONSTRUCTION
 BOZEMAN, MONTANA
 PHONE: 406.994.5413 FAX: 406.994.5665

INDEX #	27
BUILDING #	109