

Aug 28, 2014 - 9:17am - 105_A1.dwg
 H:\Romney Hall\Building Plan - Book Copy\

1

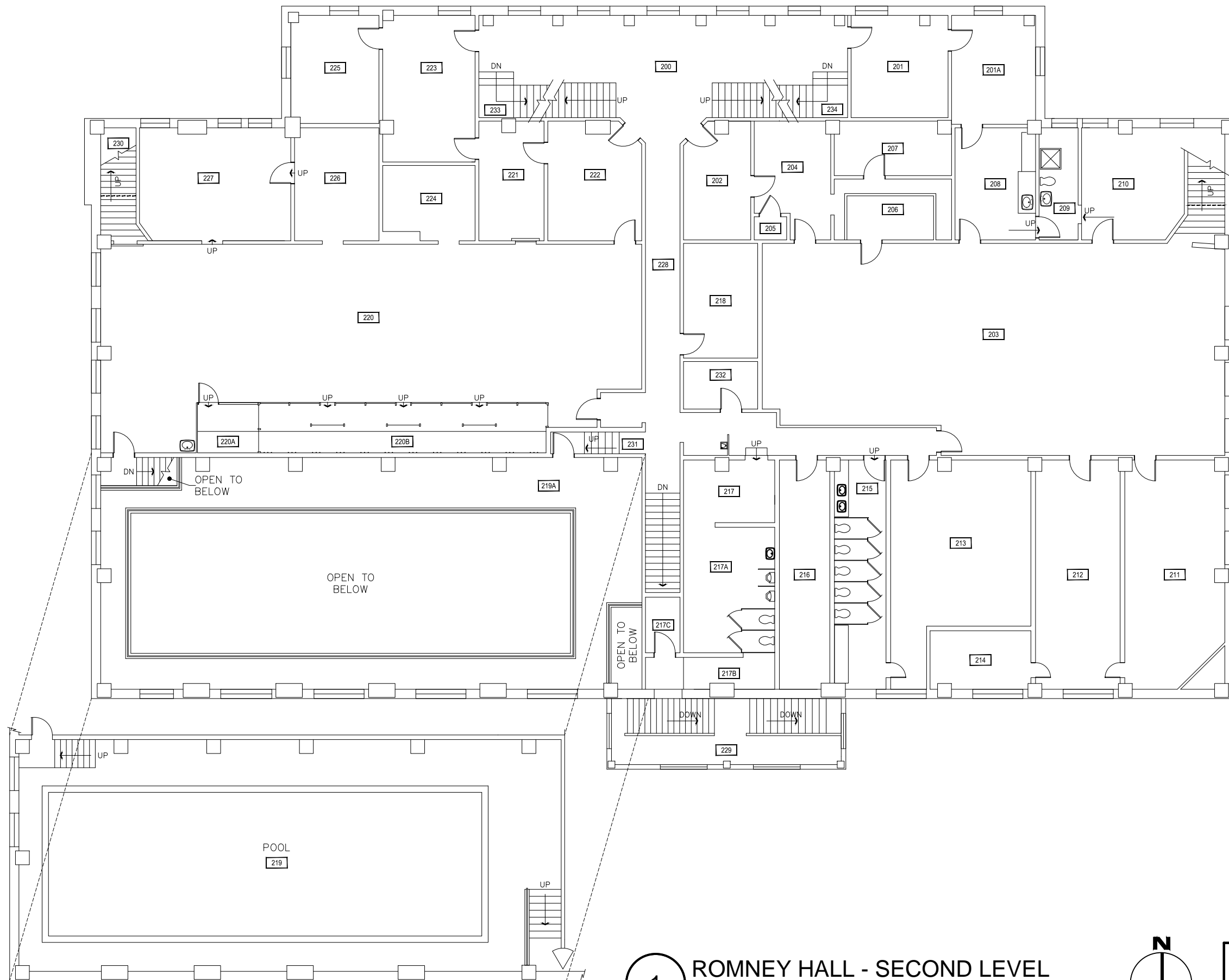
ROMNEY HALL - FIRST LEVEL

SCALE: 1" = 15'




MONTANA STATE UNIVERSITY
 FACILITIES PLANNING,
 DESIGN & CONSTRUCTION
 BOZEMAN, MONTANA
 PHONE: 406.994.4131 FAX: 406.994.6572

INDEX #	8
BUILDING #	105



1

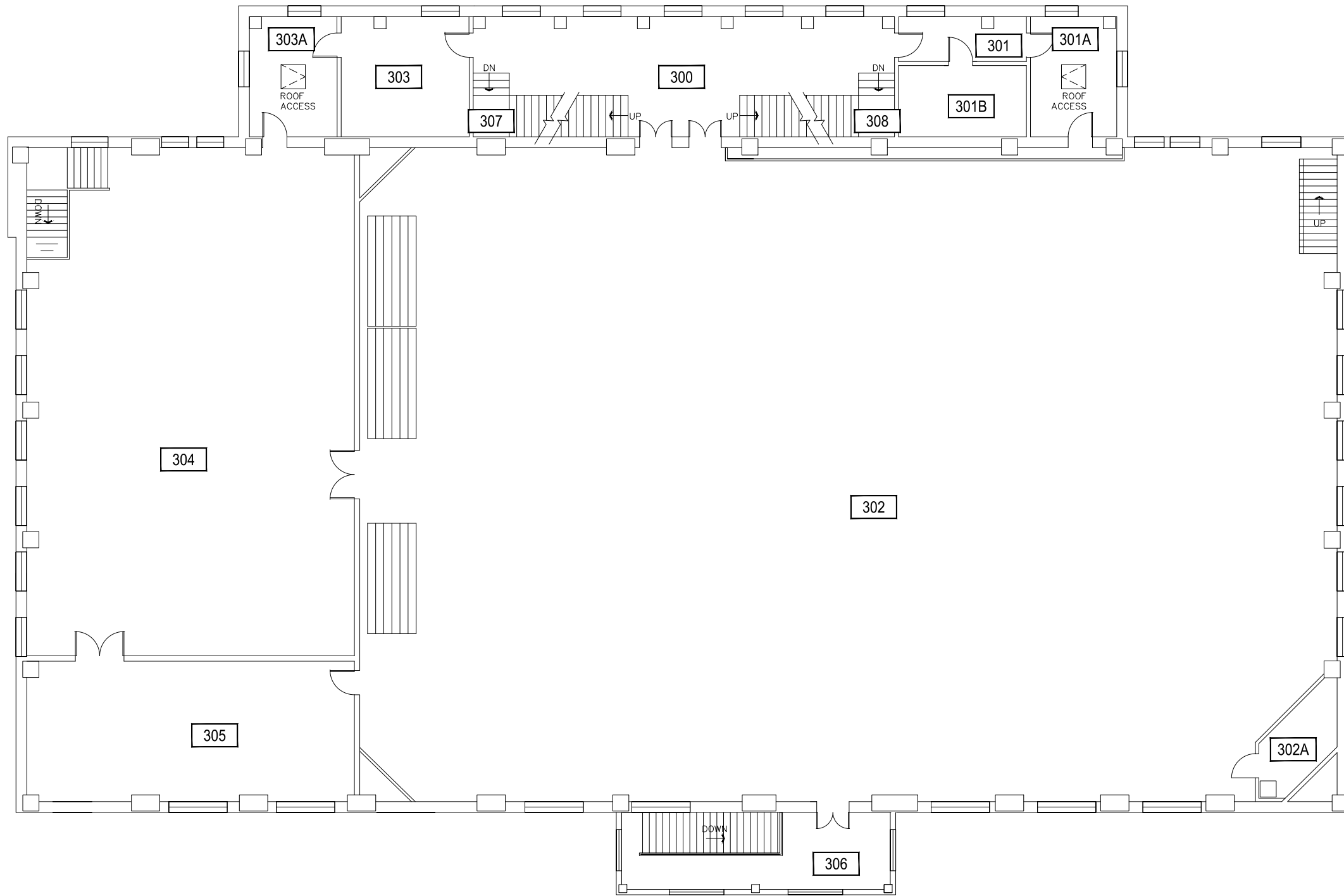
ROMNEY HALL - SECOND LEVEL

SCALE: 1" = 15'



M MONTANA
STATE UNIVERSITY
FACILITIES PLANNING,
DESIGN & CONSTRUCTION
BOZEMAN, MONTANA
PHONE: 406.994.4131 FAX: 406.994.6572

INDEX #	8
BUILDING #	105



1

ROMNEY HALL - THIRD LEVEL

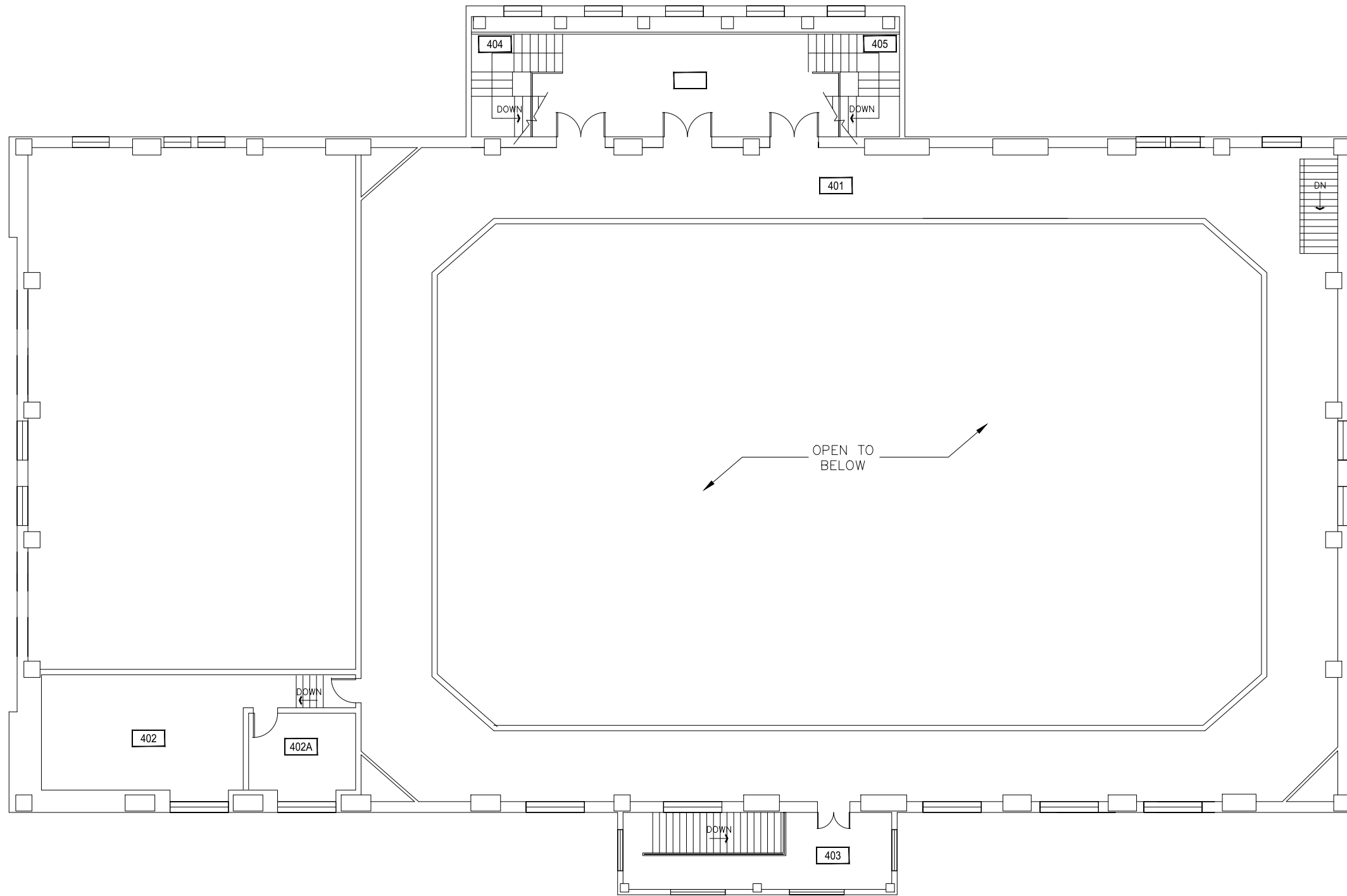
SCALE: 1" = 15'



Aug 28, 2014 - 9:17am - 105_A3.dwg
H:\Romney Hall\Building Plan - Book Copy\

M MONTANA STATE UNIVERSITY
FACILITIES PLANNING,
DESIGN & CONSTRUCTION
BOZEMAN, MONTANA
PHONE: 406.994.4131 FAX: 406.994.6572

INDEX #	8
BUILDING #	105



1

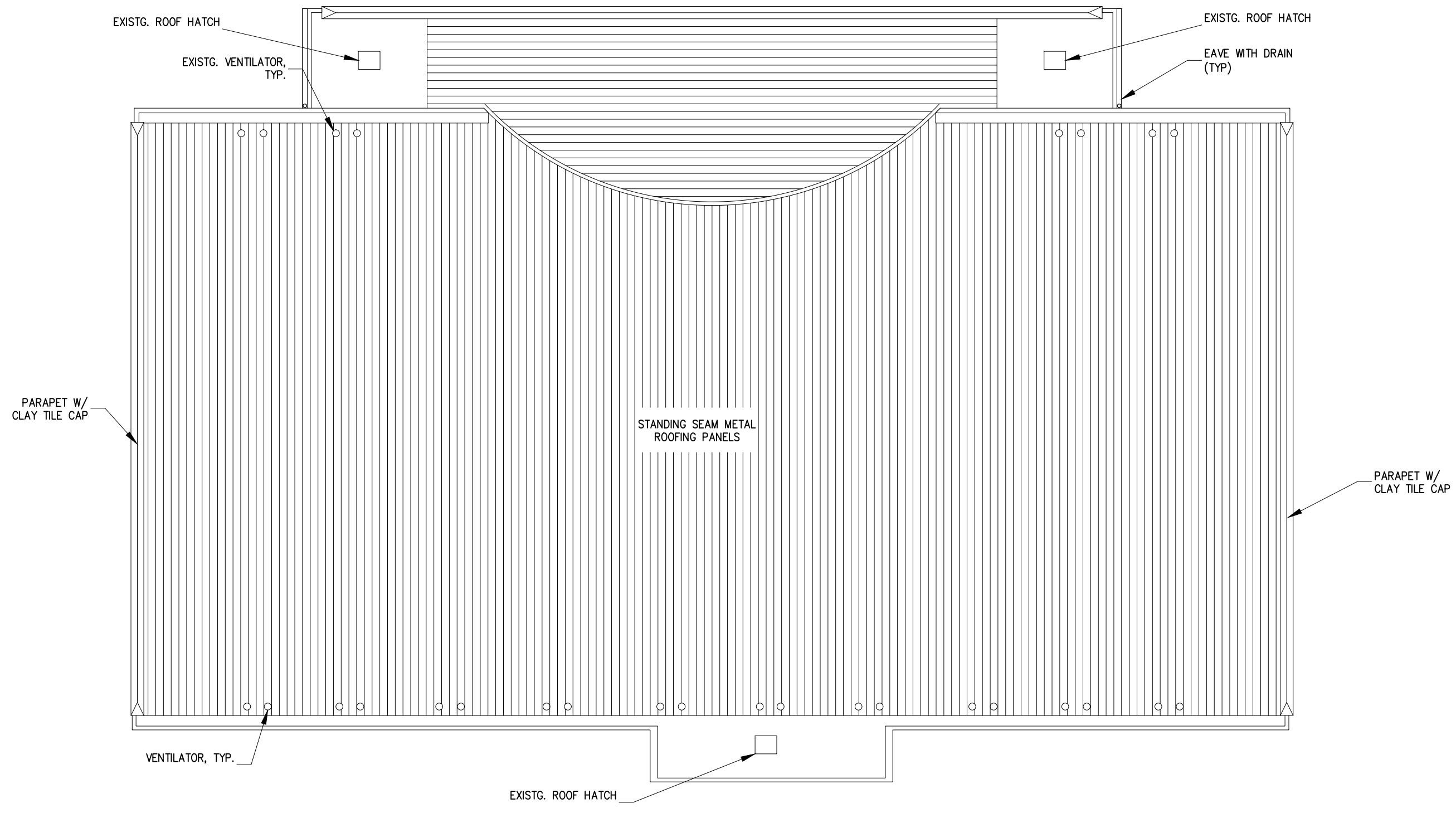
ROMNEY HALL - FOURTH LEVEL

SCALE: 1" = 15'



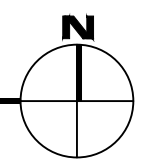
M MONTANA
STATE UNIVERSITY
FACILITIES PLANNING,
DESIGN & CONSTRUCTION
BOZEMAN, MONTANA
PHONE: 406.994.4131 FAX: 406.994.6572

INDEX #	8
BUILDING #	105



Aug 28, 2014 - 9:18am - 105_AIR.dwg
 H:\Romney Hall\Building Plan - Book Copy\

1 ROMNEY HALL - ROOF LEVEL
 SCALE: 1" = 15'



M MONTANA STATE UNIVERSITY
 FACILITIES PLANNING,
 DESIGN & CONSTRUCTION
 BOZEMAN, MONTANA
 PHONE: 406.994.4131 FAX: 406.994.6572

INDEX #	8
BUILDING #	105