

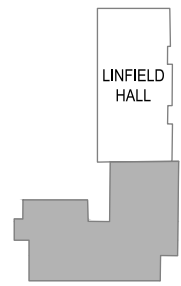
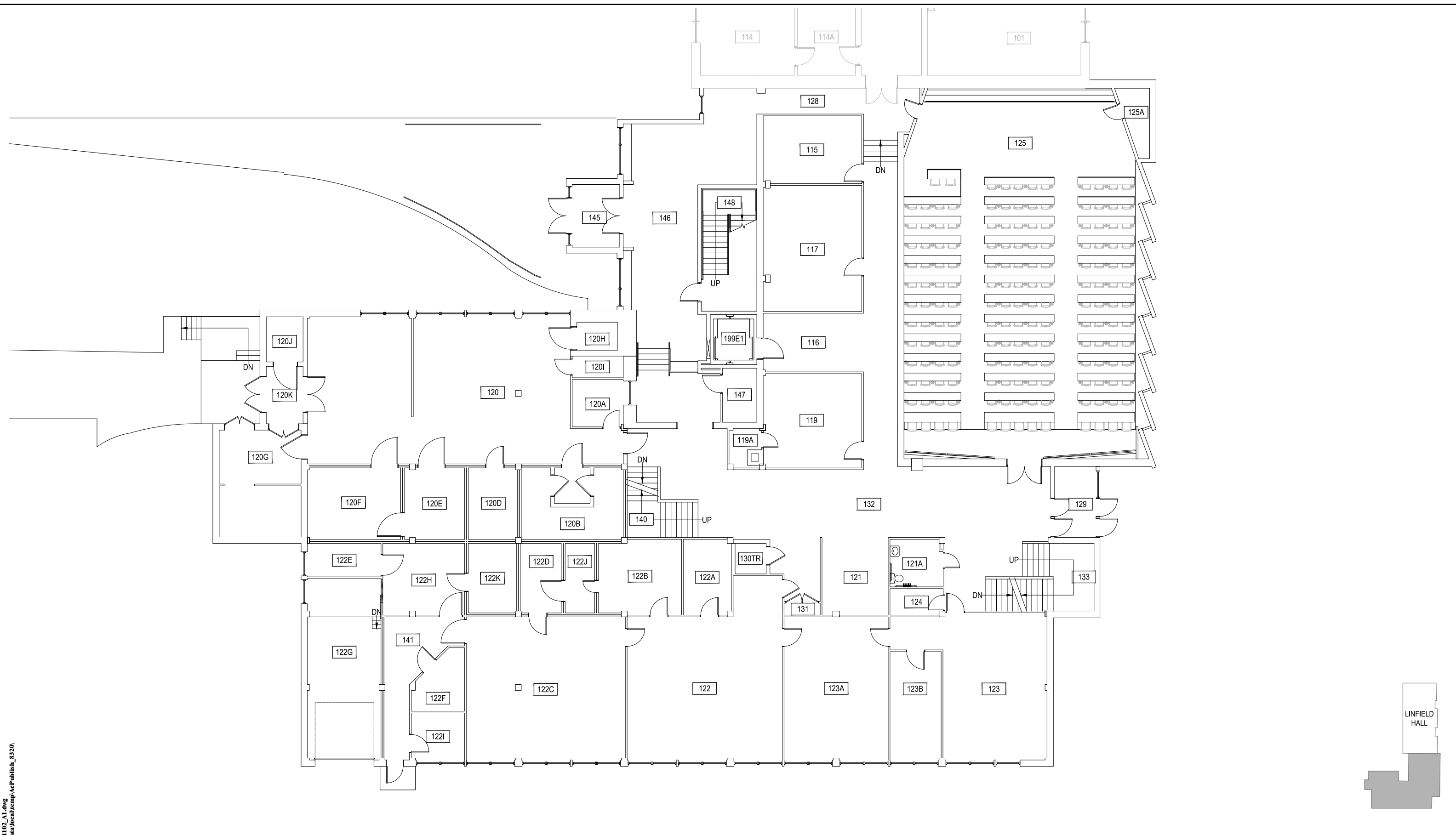
1 LINFIELD HALL SOUTH - BASEMENT LEVEL
 SCALE: 1" = 15'



Jun 19, 2015 - 2:55pm - 104102_AB.dwg
 C:\Users\gary.gramer\appdata\local\temp\AcPublish_832d\

M MONTANA STATE UNIVERSITY
 CAMPUS PLANNING,
 DESIGN & CONSTRUCTION
 BOZEMAN, MONTANA
 PHONE: 406.994.5413 FAX: 406.994.5665

INDEX #
29
 BUILDING #
104102



1 LINFIELD HALL SOUTH - FIRST LEVEL
 SCALE: 1" = 15'

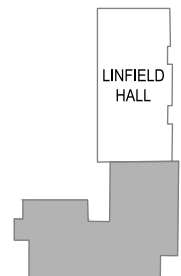
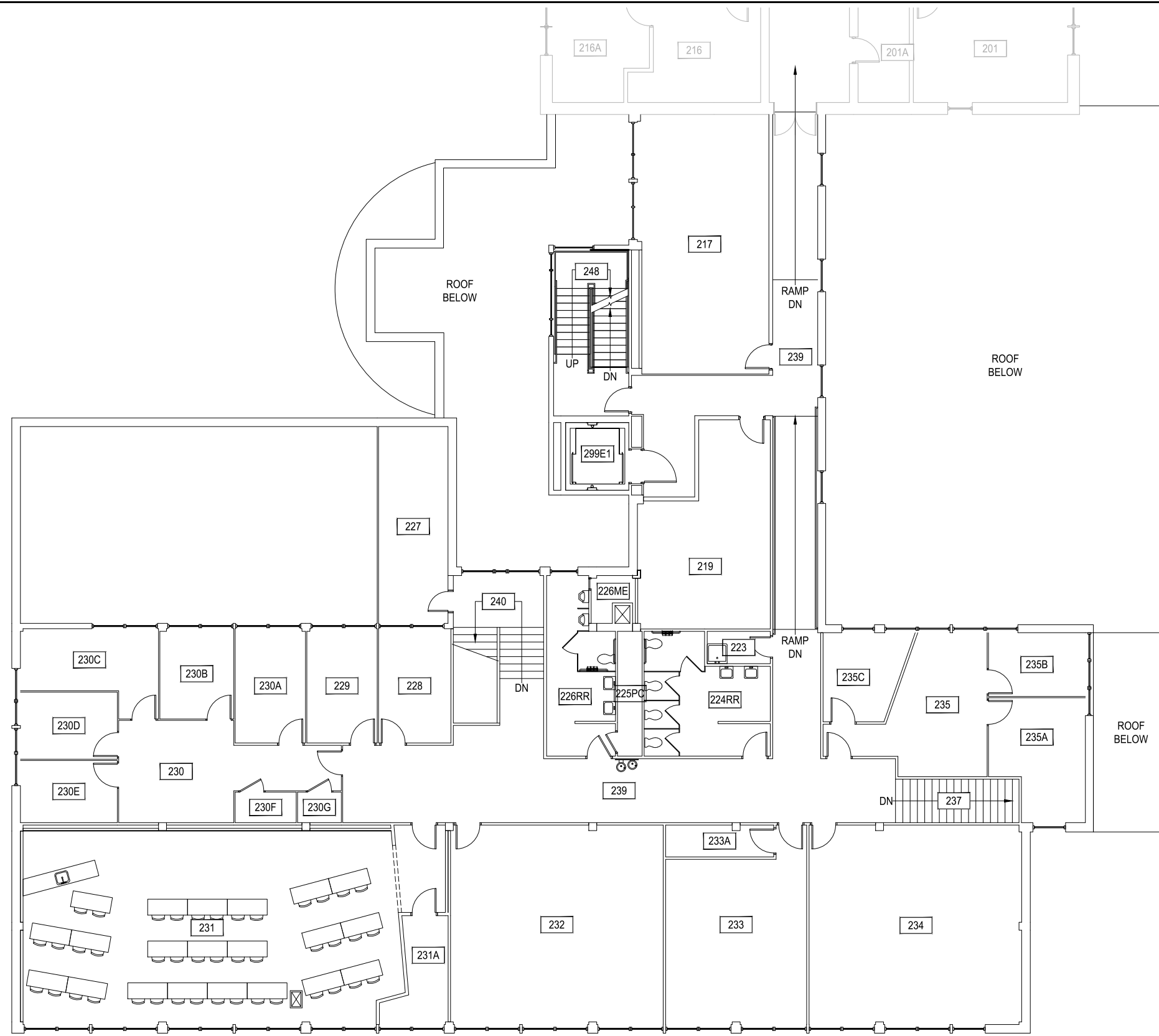


Jun 19, 2015 - 2:55pm - 104102_A1.dwg
 C:\Users\gary.gramer\appdata\local\temp\AcPublish_8320

M MONTANA STATE UNIVERSITY
 CAMPUS PLANNING,
 DESIGN & CONSTRUCTION
 BOZEMAN, MONTANA
 PHONE: 406.994.5413 FAX: 406.994.5665

INDEX # **29**
 BUILDING # **104102**

Jun 19, 2015 - 2:55pm - 104102_A2.dwg
C:\Users\gary.gramer\appdata\local\temp\AcPublish_8320\



1

LINFIELD HALL SOUTH - SECOND LEVEL

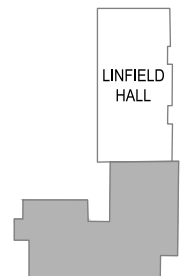
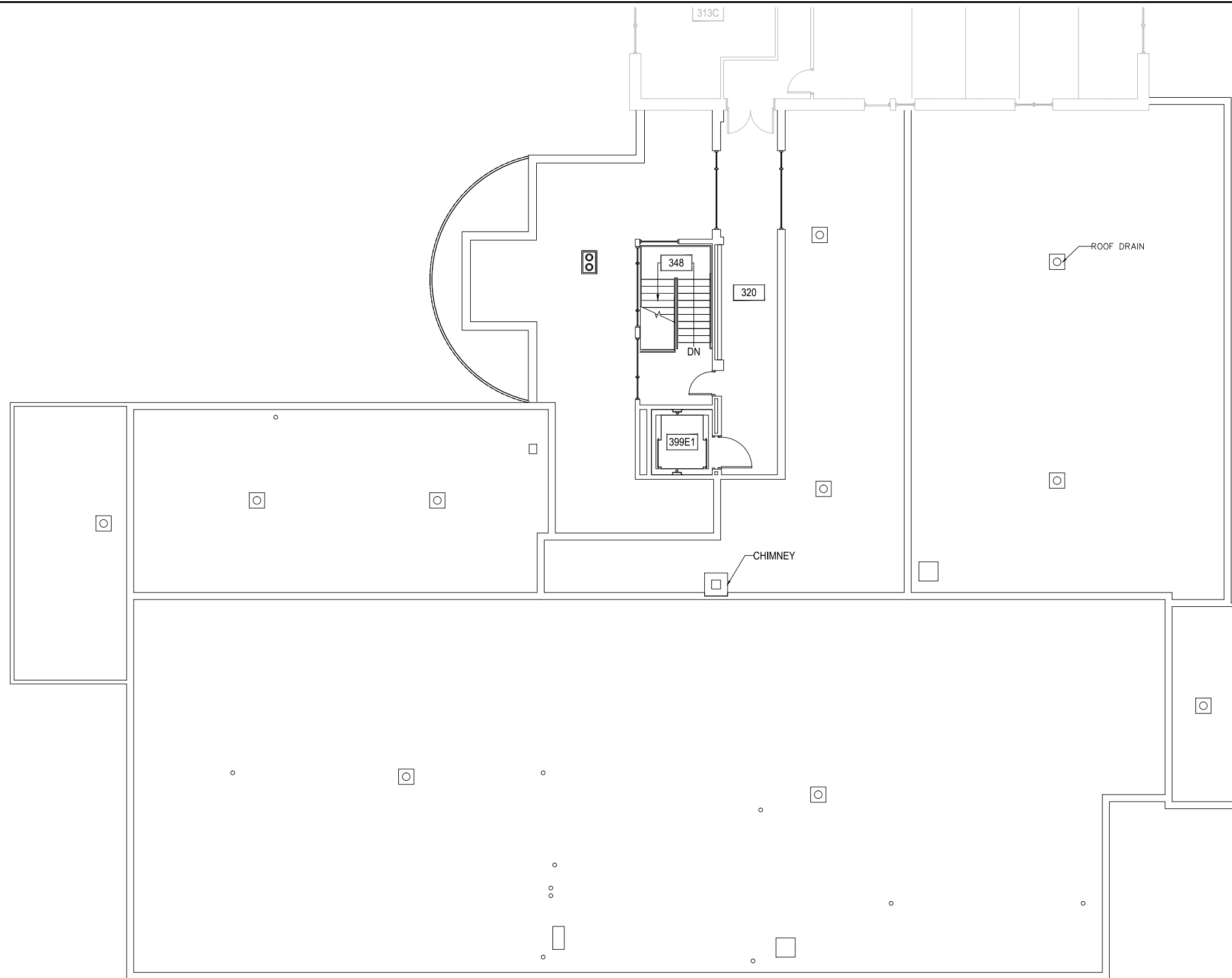
SCALE: 1" = 15'



M MONTANA STATE UNIVERSITY
CAMPUS PLANNING,
DESIGN & CONSTRUCTION
BOZEMAN, MONTANA
PHONE: 406.994.5413 FAX: 406.994.5665

INDEX # **29**
BUILDING # **104102**

Jun 19, 2015 - 2:55pm - 104102_A3.dwg
C:\Users\gary.gramer\appdata\local\temp\AcPublish_8320\



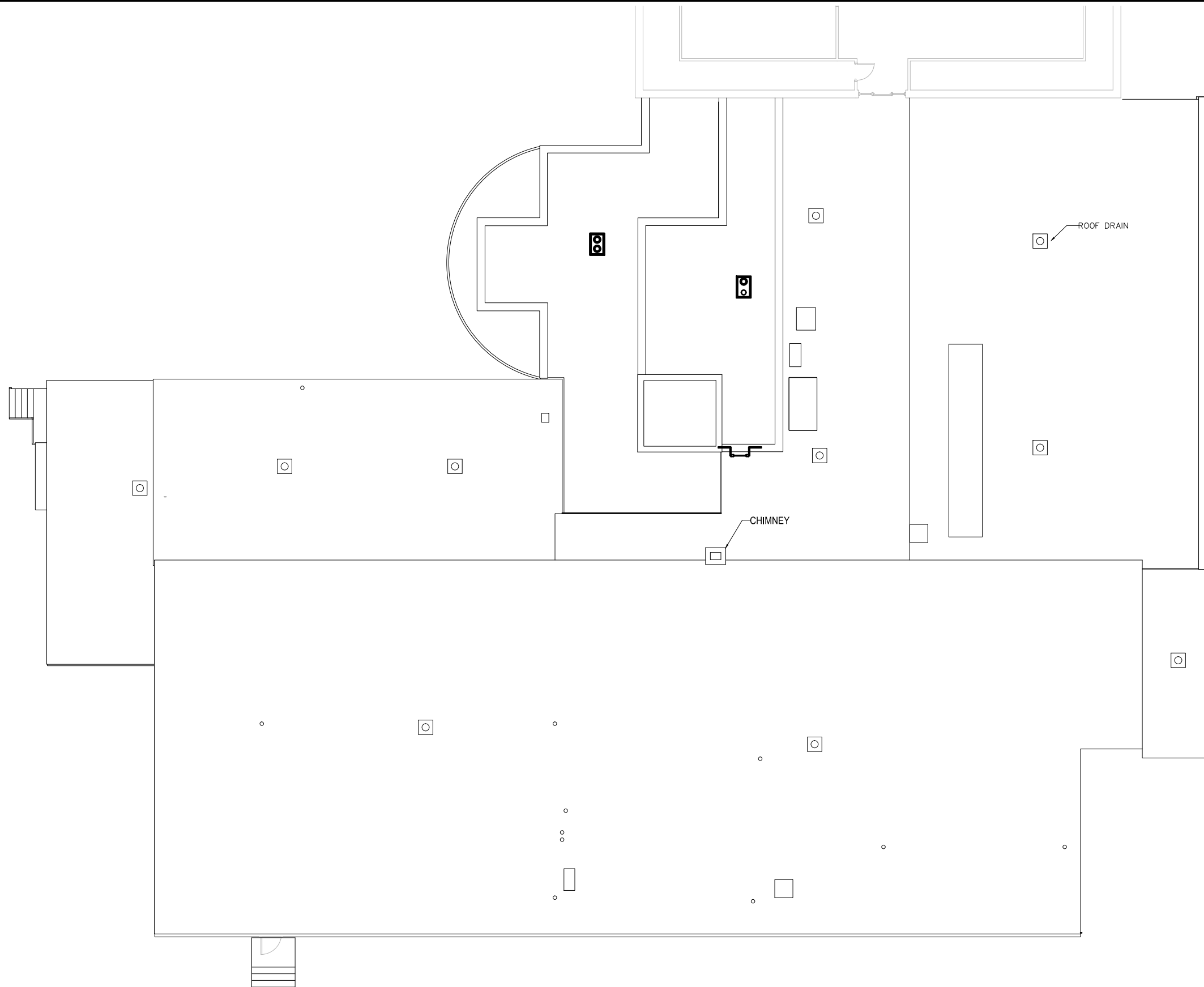
1 LINFIELD HALL SOUTH - THIRD LEVEL
SCALE: 1" = 15'



M MONTANA STATE UNIVERSITY
CAMPUS PLANNING,
DESIGN & CONSTRUCTION
BOZEMAN, MONTANA
PHONE: 406.994.5413 FAX: 406.994.5665

INDEX # **29**
BUILDING # **104102**

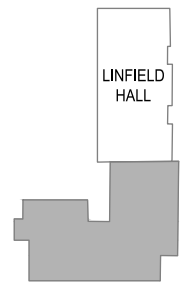
Jun 19, 2015 - 2:55pm - 104102_AR.dwg
C:\Users\gary.gramer\appdata\local\temp\AcPublish_832d\



1

LINFIELD HALL SOUTH - ROOF LEVEL

SCALE: 1" = 15'



M MONTANA
STATE UNIVERSITY
CAMPUS PLANNING,
DESIGN & CONSTRUCTION
BOZEMAN, MONTANA
PHONE: 406.994.5413 FAX: 406.994.5665

INDEX #
29
BUILDING #
104102