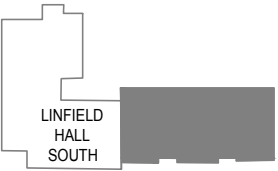
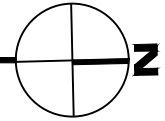


Jan 18, 2018 - 9:18am - 104101_AB.dwg
 H:\Linfield Hall\Building Plan - Book Copy\Linfield Hall

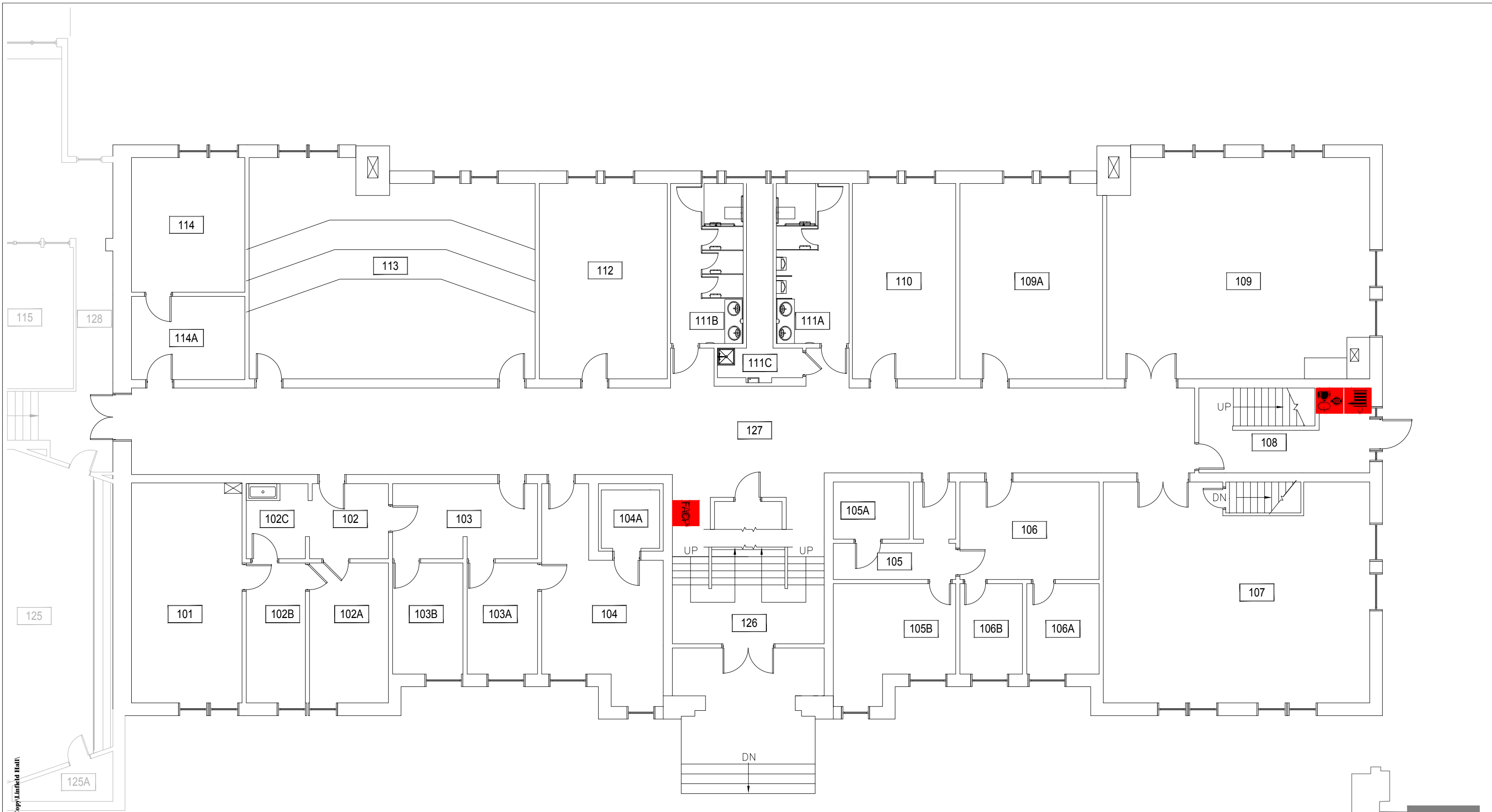


1
LINFIELD HALL - BASEMENT LEVEL
 SCALE: 3/32" = 1'

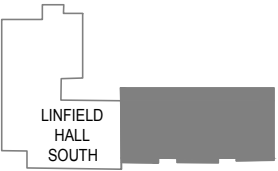


M MONTANA STATE UNIVERSITY
 CAMPUS PLANNING,
 DESIGN & CONSTRUCTION
 BOZEMAN, MONTANA
 PHONE: 406.994.4131 FAX: 406.994.6572

INDEX #
30
BUILDING #
104101

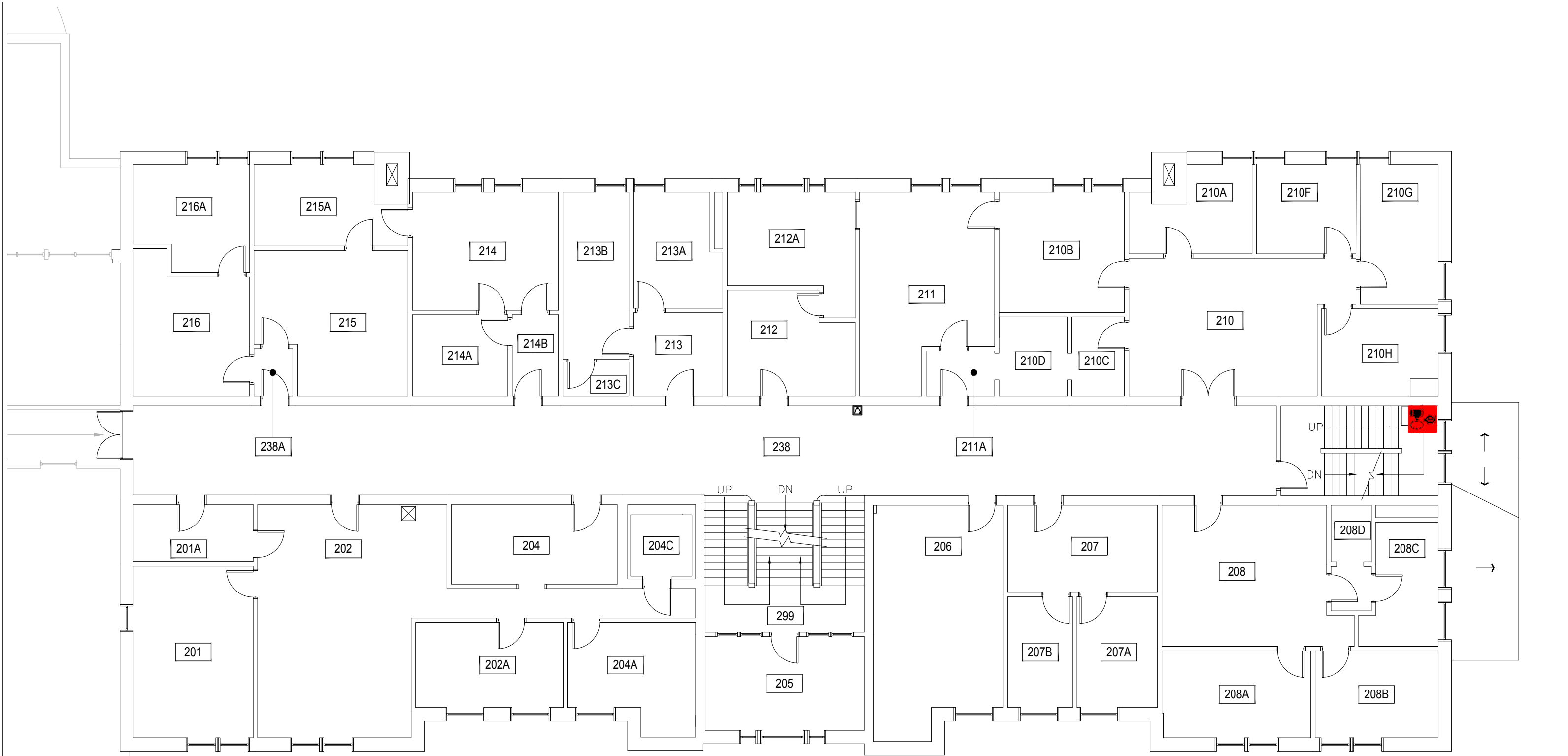


Jan 18, 2018 - 9:18am - 104101_A1.dwg
 HE:\Linfield Hall\Building Plan - Book Copy\Linfield Hall

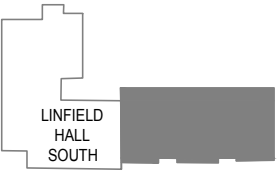


1 LINFIELD HALL - FIRST LEVEL
 SCALE: 3/32" = 1'

 MONTANA STATE UNIVERSITY CAMPUS PLANNING, DESIGN & CONSTRUCTION BOZEMAN, MONTANA PHONE: 406.994.4131 FAX: 406.994.6572	INDEX #
	30
	BUILDING #
	104101



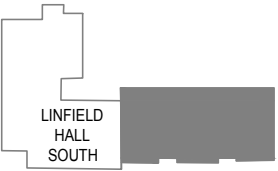
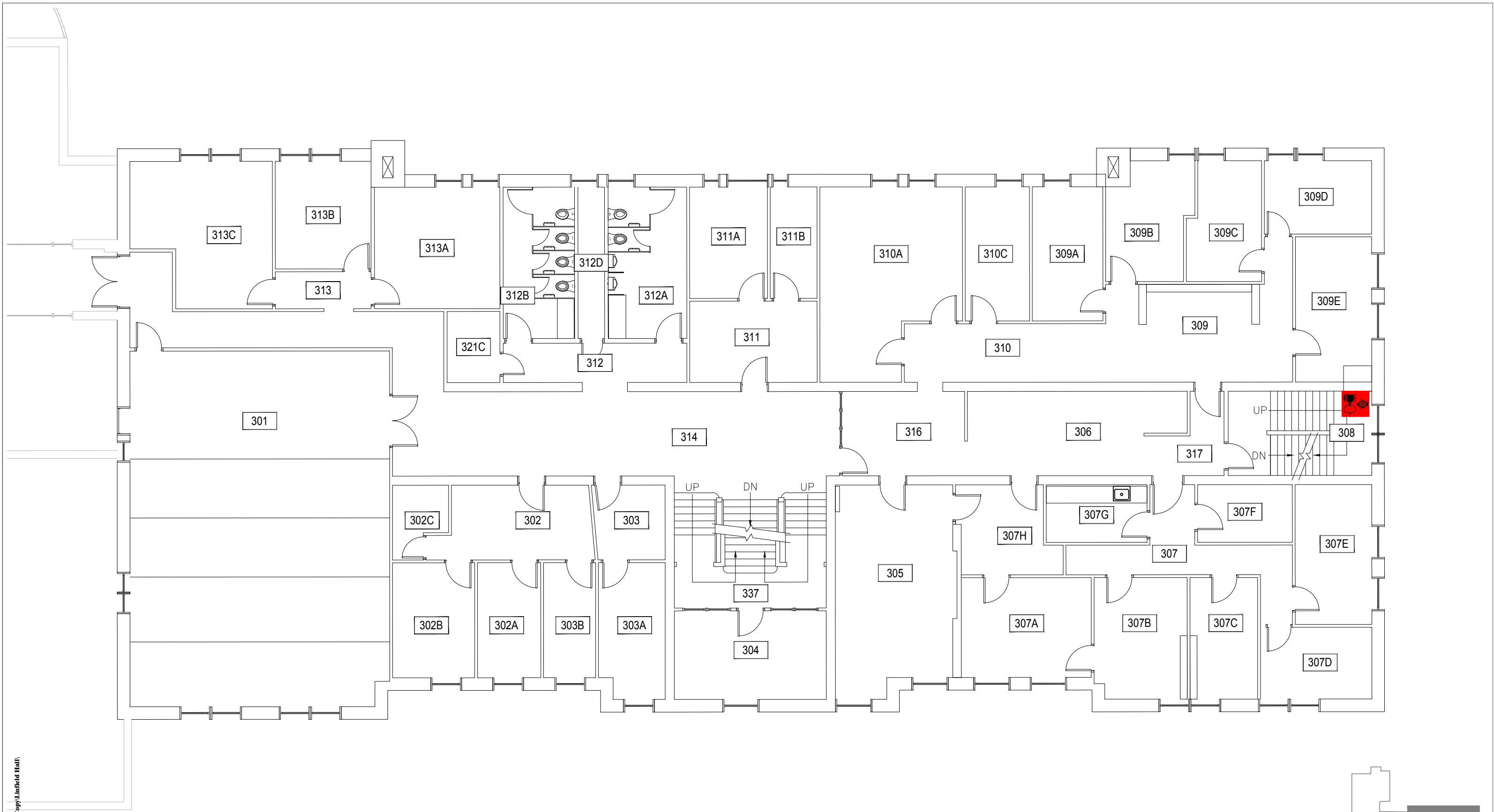
Jan 18, 2018 - 9:18am - 104101_A2.dwg
 H:\Linfield Hall\Building Plan - Book Copy\Linfield Hall



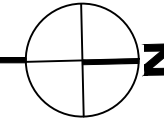
1 LINFIELD HALL - SECOND LEVEL
 SCALE: 3/32" = 1'

MONTANA STATE UNIVERSITY CAMPUS PLANNING, DESIGN & CONSTRUCTION BOZEMAN, MONTANA PHONE: 406.994.4131 FAX: 406.994.6572	INDEX #
	30
	BUILDING #
	104101

Jan 18, 2018 - 9:18am - 104101_A3.dwg
H:\Linfield Hall\Building Plan - Book Copy\Linfield Hall



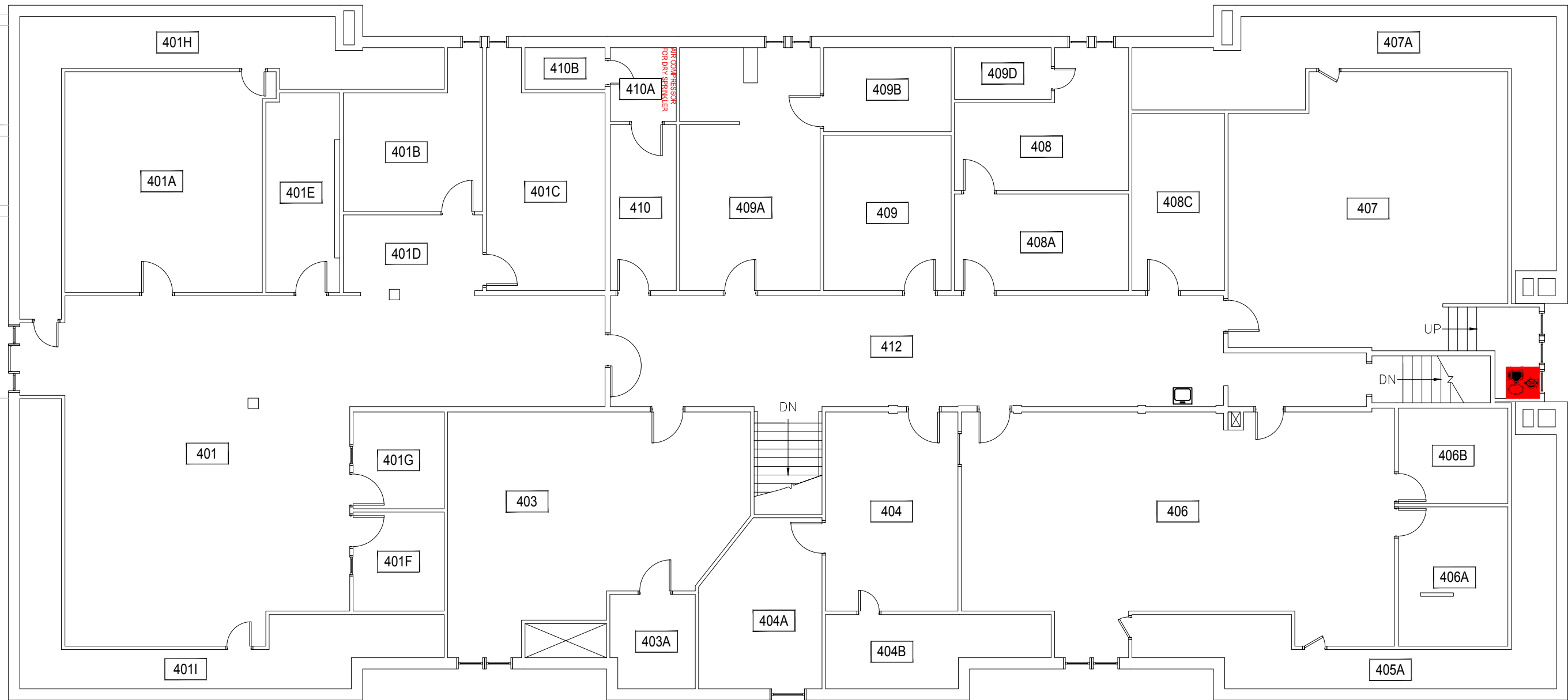
1 LINFIELD HALL - THIRD LEVEL
SCALE: 3/32" = 1'



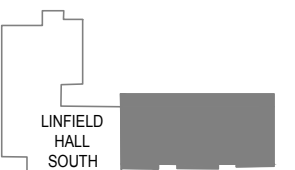
M MONTANA STATE UNIVERSITY
CAMPUS PLANNING,
DESIGN & CONSTRUCTION
BOZEMAN, MONTANA
PHONE: 406.994.4131 FAX: 406.994.6572

INDEX #
30
BUILDING #
104101

Jan 18, 2018 - 9:18am - 104101_A4.dwg
H:\Linfield Hall\Building Plan - Book Copy\Linfield Hall



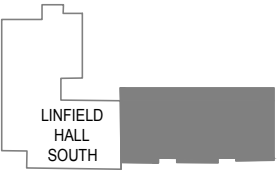
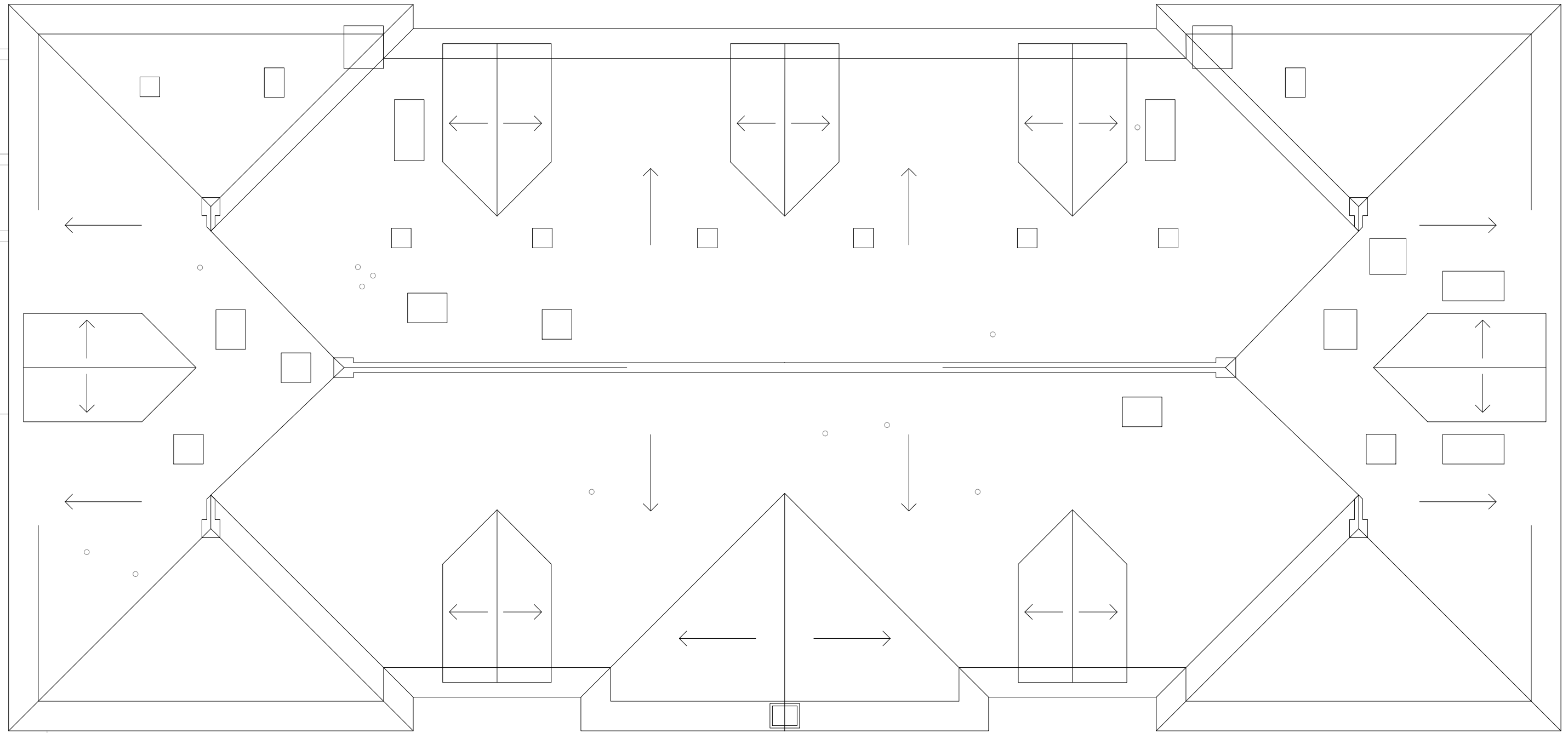
1 LINFIELD HALL - FOURTH LEVEL
SCALE: 3/32" = 1'



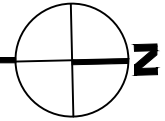
M MONTANA STATE UNIVERSITY
CAMPUS PLANNING,
DESIGN & CONSTRUCTION
BOZEMAN, MONTANA
PHONE: 406.994.4131 FAX: 406.994.6572

INDEX # **30**
BUILDING # **104101**

Jan 18, 2018 - 9:18am - 104101_AR.dwg
H:\Linfield Hall\Building Plan - Book Copy\Linfield Hall\



1 LINFIELD HALL - ROOF LEVEL
SCALE: 3/32" = 1'



M MONTANA
STATE UNIVERSITY
CAMPUS PLANNING,
DESIGN & CONSTRUCTION
BOZEMAN, MONTANA
PHONE: 406.994.4131 FAX: 406.994.6572

INDEX #
30
BUILDING #
104101