

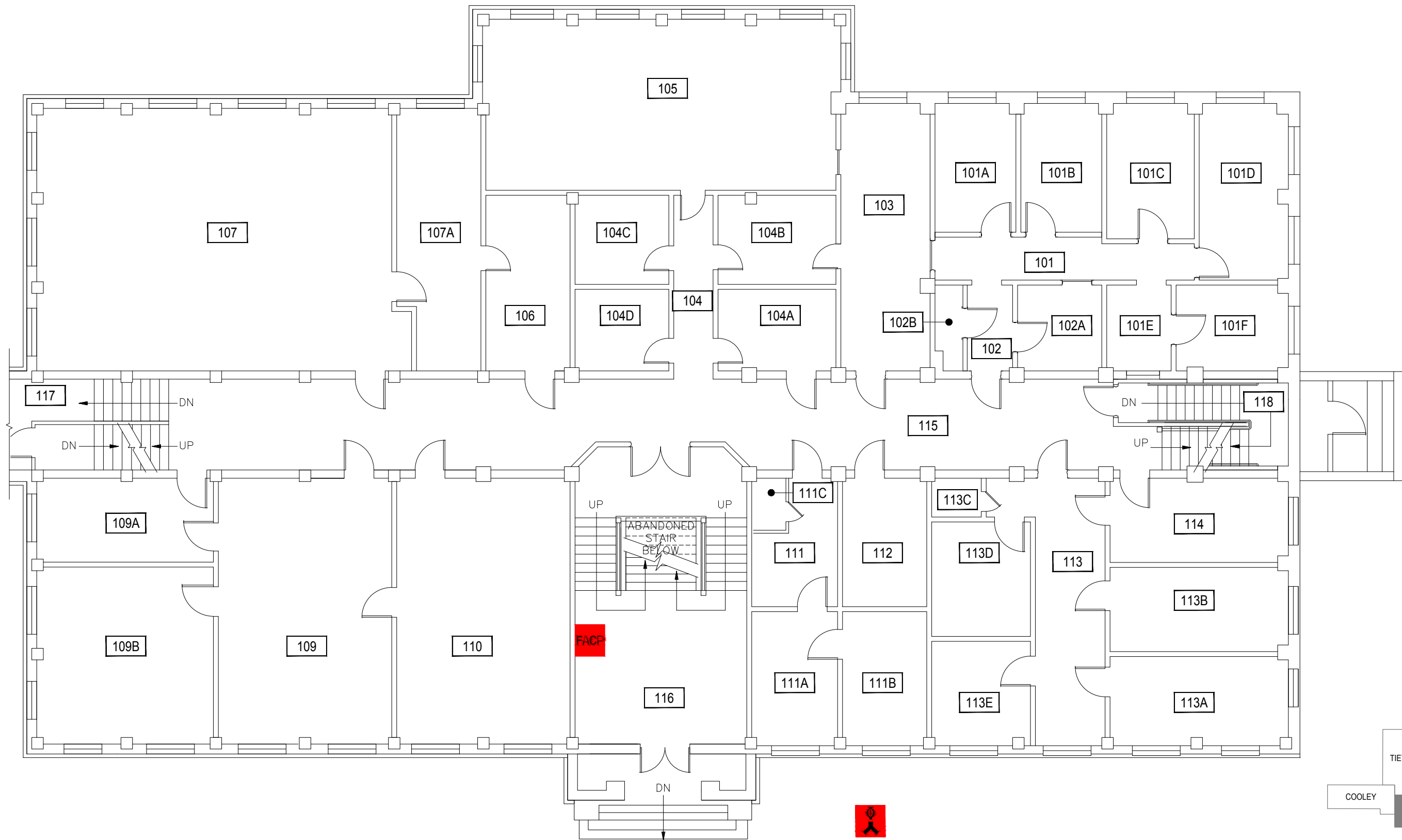
1
**LEWIS HALL - BASEMENT LEVEL**  
 SCALE 1" = 10'



Jan 17, 2018 - 3:26pm - 103\_AB.dwg  
 H:\Lewis Hall\Building Plan - Book Copy\

**M MONTANA STATE UNIVERSITY**  
 CAMPUS PLANNING,  
 DESIGN & CONSTRUCTION  
 BOZEMAN, MONTANA  
 PHONE: 406.994.4131 FAX: 406.994.6572

INDEX # **22**  
 BUILDING # **103**

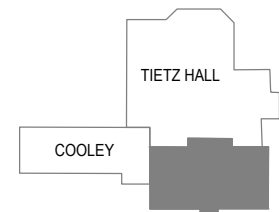
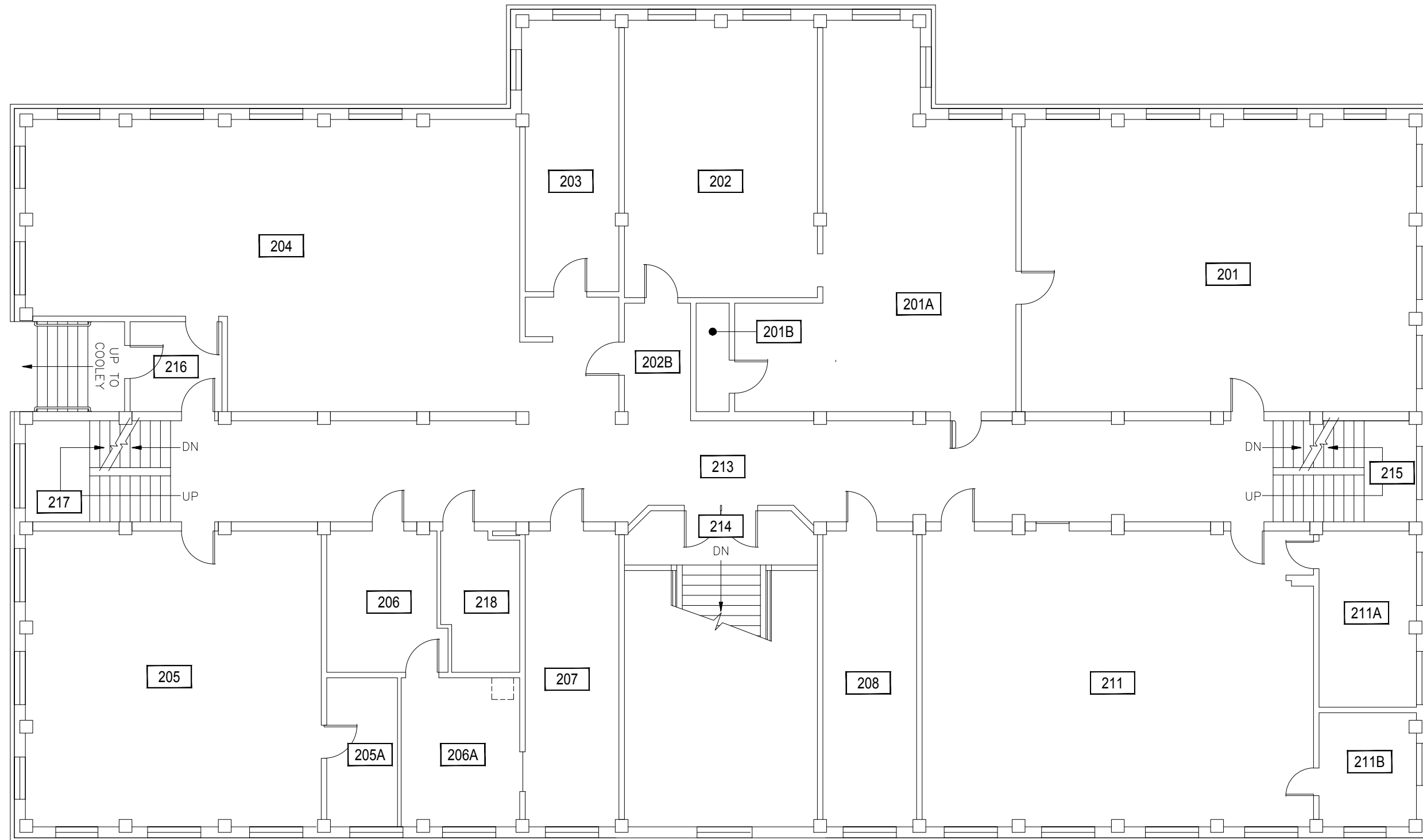


1 LEWIS HALL - FIRST LEVEL  
 SCALE 1" = 10'


Jan 17, 2018 - 3:26pm - 103\_A1.dwg  
 H:\Lewis Hall\Building Plan - Book Copy\

**M** MONTANA STATE UNIVERSITY  
 CAMPUS PLANNING, DESIGN & CONSTRUCTION  
 BOZEMAN, MONTANA  
 PHONE: 406.994.4131 FAX: 406.994.6572

INDEX # **22**  
 BUILDING # **103**



**1** LEWIS HALL - SECOND LEVEL  
 SCALE 1" = 10'

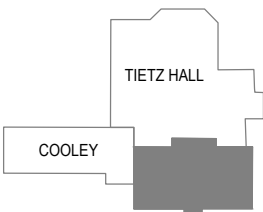
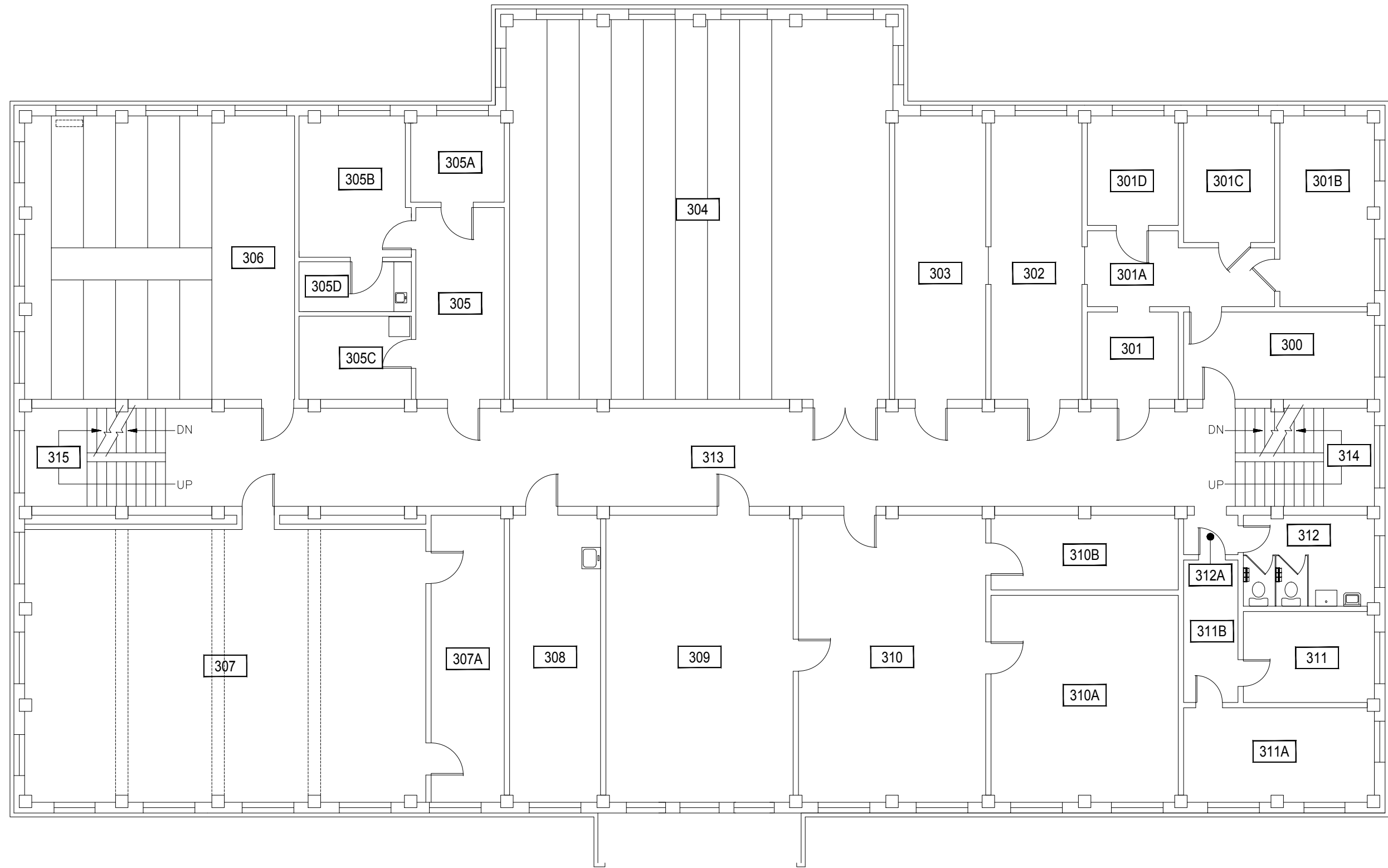


Jan 17, 2018 - 3:27pm - 103\_A2.dwg  
 H:\Lewis Hall\Building Plan - Book Copy\


**M** MONTANA STATE UNIVERSITY  
 CAMPUS PLANNING,  
 DESIGN & CONSTRUCTION  
 BOZEMAN, MONTANA  
 PHONE: 406.994.4131 FAX: 406.994.6572

INDEX # **22**  
 BUILDING # **103**

Jan 17, 2018 - 3:27pm - 103\_A3.dwg  
H:\Lewis Hall\Building Plan - Book Copy\

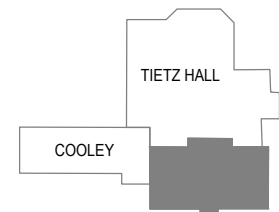
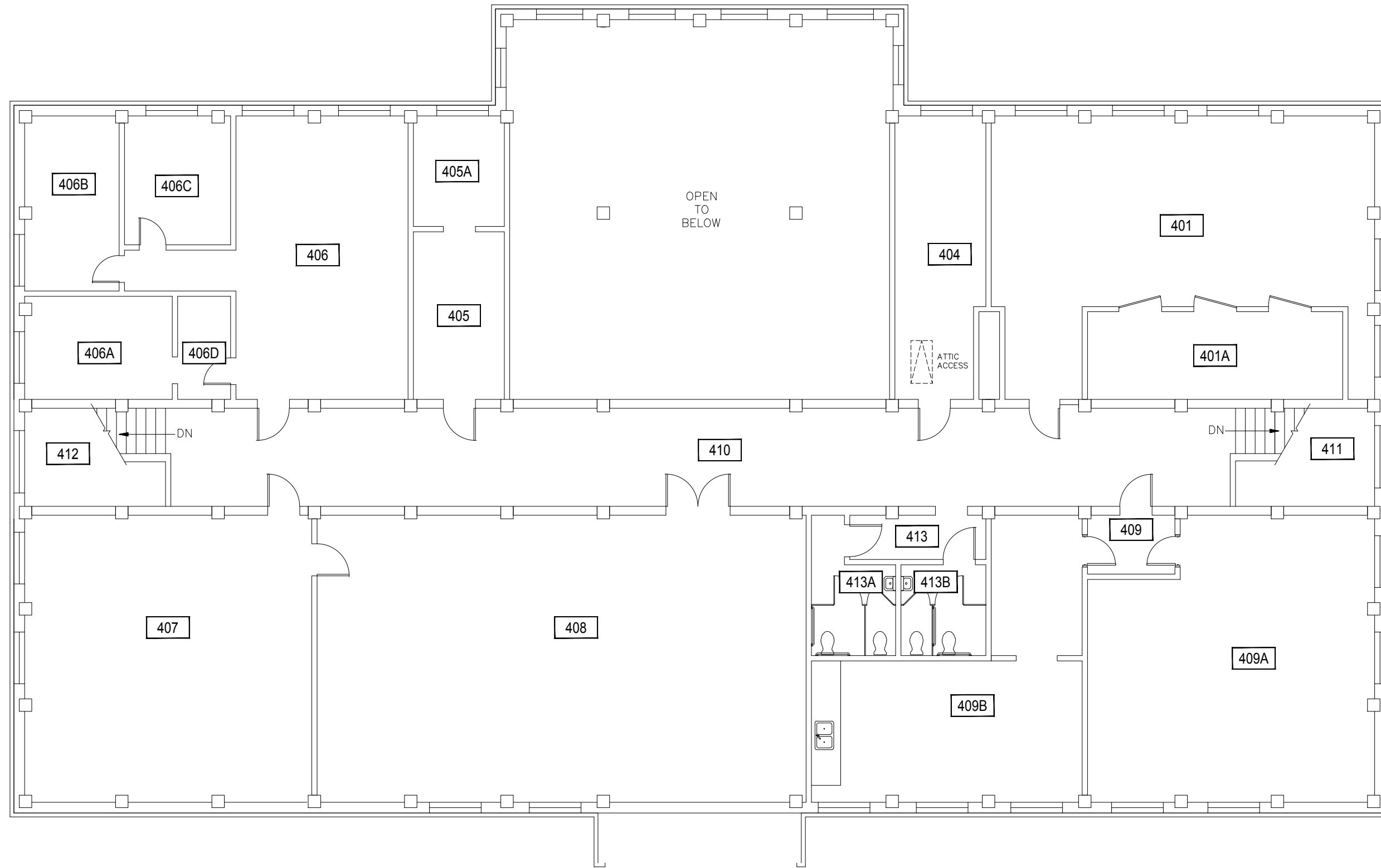


1 LEWIS HALL - THIRD LEVEL  
SCALE 1" = 10'



**M** MONTANA STATE UNIVERSITY  
CAMPUS PLANNING,  
DESIGN & CONSTRUCTION  
BOZEMAN, MONTANA  
PHONE: 406.994.4131 FAX: 406.994.6572

INDEX # **22**  
BUILDING # **103**



1
**LEWIS HALL - FOURTH LEVEL**  
 SCALE 1" = 10'



Jan 17, 2018 - 3:27pm - 103\_A4.dwg  
 H:\Lewis Hall\Building Plan - Book Copy\

**M MONTANA STATE UNIVERSITY**  
 CAMPUS PLANNING,  
 DESIGN & CONSTRUCTION  
 BOZEMAN, MONTANA  
 PHONE: 406.994.4131 FAX: 406.994.6572

INDEX # **22**  
 BUILDING # **103**

TIETZ HALL

BRIDGE TO  
COOLEY

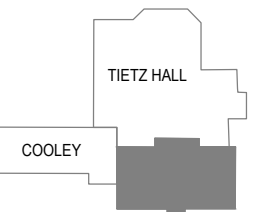
CANOPY #1  
+14'-0"

MAIN ROOF  
+40'-0"

ROOF HATCH

CANOPY #2  
+21'-0"

6:12 (TYPICAL)



1 LEWIS HALL - ROOF LEVEL  
SCALE 1" = 10'



**M** MONTANA  
STATE UNIVERSITY  
CAMPUS PLANNING,  
DESIGN & CONSTRUCTION  
BOZEMAN, MONTANA  
PHONE: 406.994.4131 FAX: 406.994.6572

INDEX #  
**22**  
BUILDING #  
**103**

Jan 17, 2018 - 3:27pm - 103\_AR.dwg  
H:\Lewis Hall\Building Plan - Book Copy\