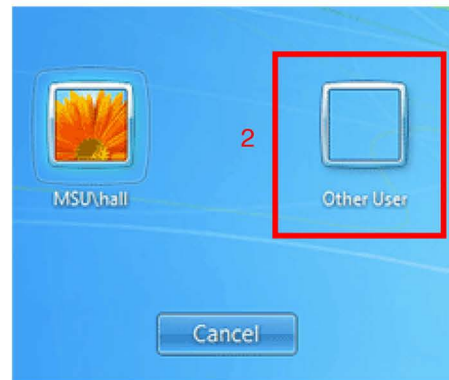


Logging in to your Desktop / Laptop following transition to NetID

\*\*\* If you did not first log out, do before proceeding. \*\*\*



1. Click the Switch User button.



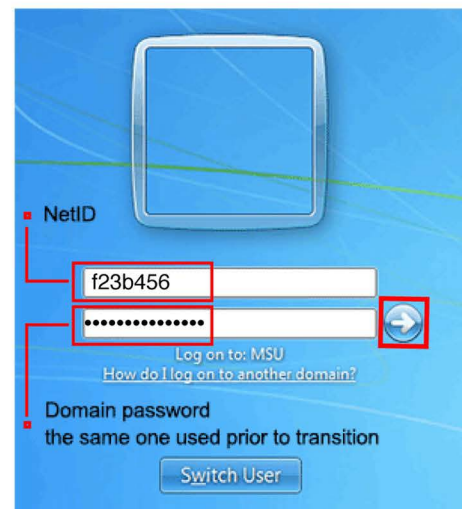
2. Click the Other User button.



3. Enter your NetID in the User name field.

4. Enter your domain password in the Password field.

*The same one you used before to log in to your desktop.*

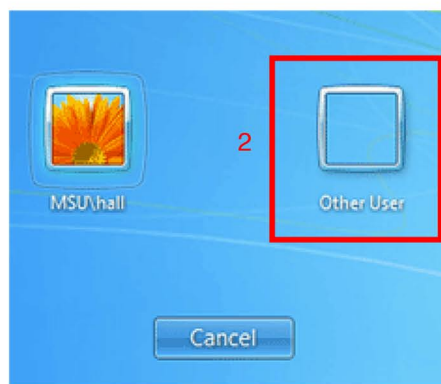


5. Click the right arrow button (or Enter) to log in.

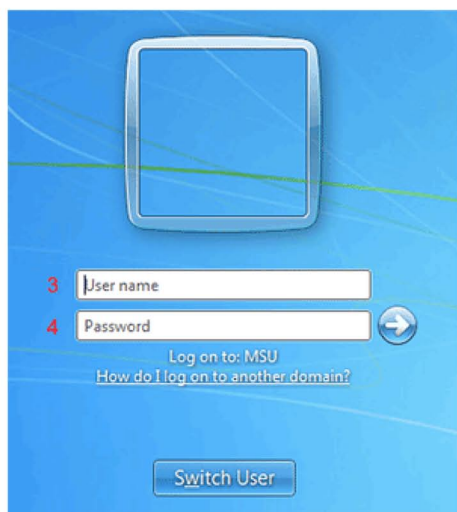
Restablishing your MSU Domain Wireless connection.  
\*\*\* If you did not first log out, do before proceeding. \*\*\*



1. Click the Switch User button.



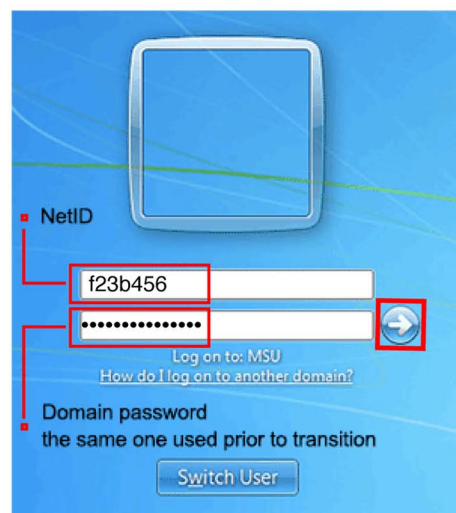
2. Click the Other User button.



3. Enter your NetID in the User name field.

4. Enter your domain password in the Password field.

*The same one you used before to log in to your desktop.*



5. Click the right arrow button (or Enter) to log in.

### Opening Outlook following transition to NetID

The first time you open Outlook following the transition to NetID **you may be presented** with a login box like figure 1 or 2.

Please note: In some cases no action will be required at all.

If prompted with figure 1 start with step 1,  
if you are presented with figure 2, begin at  
step 2.

1. Click **OK**.



figure 1.

2. Click **Use another account**.

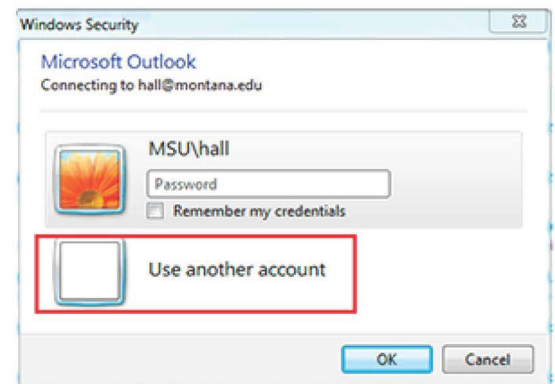


figure 2.

3. Enter your **NetID** in the User name field.
4. Enter your **domain password** in password field.  
(the same one you used before the transition).
5. Click **OK**.

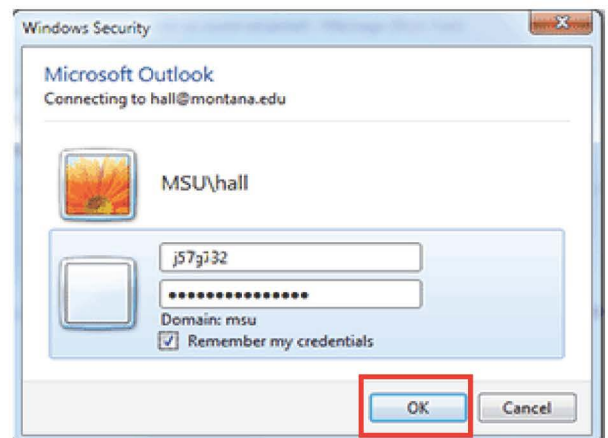


figure 3.

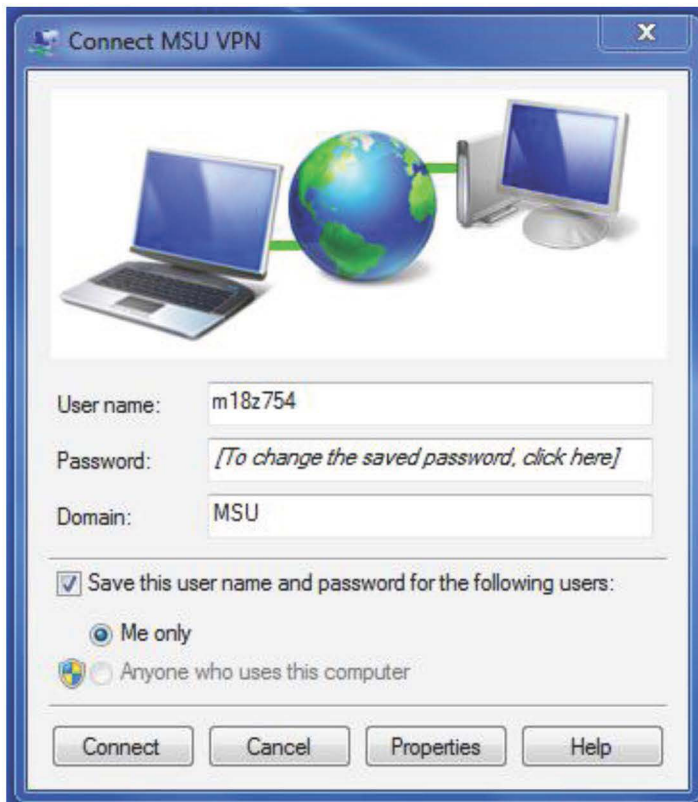
### Updating VPN account settings following transition to NetID

Refer to: <http://www.montana.edu/itcenter/computing/desktop/vpn-vista-7.php>

Windows:

1. Go to the Control Panel.
2. Click Network and Sharing Center.
3. Select Manage Network Connections
4. Click Connect to a workplace – Set up a dial-up or VPN connection...
5. Check use existing connection and then click MSU VPN.
6. Enter your NetID in the User name field.
7. Click Connect.

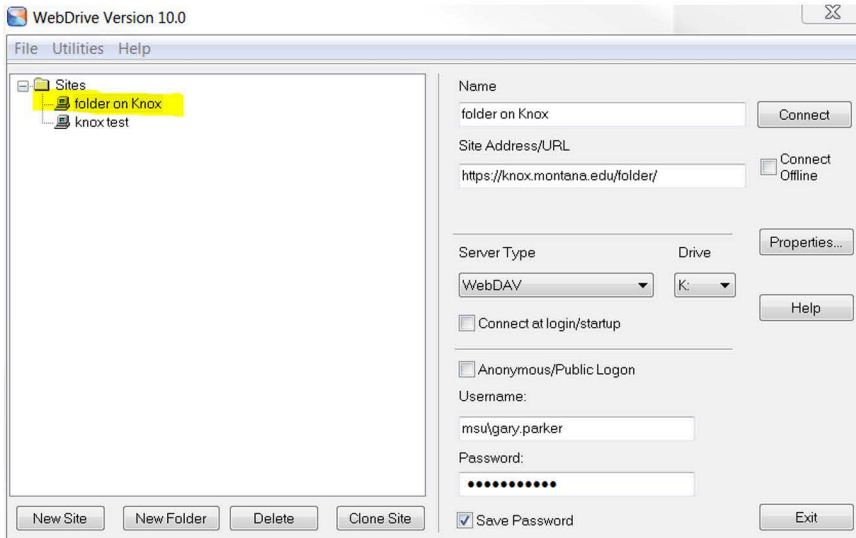
If you have a short cut set up simply click the short cut and update your settings as shown in figure below:



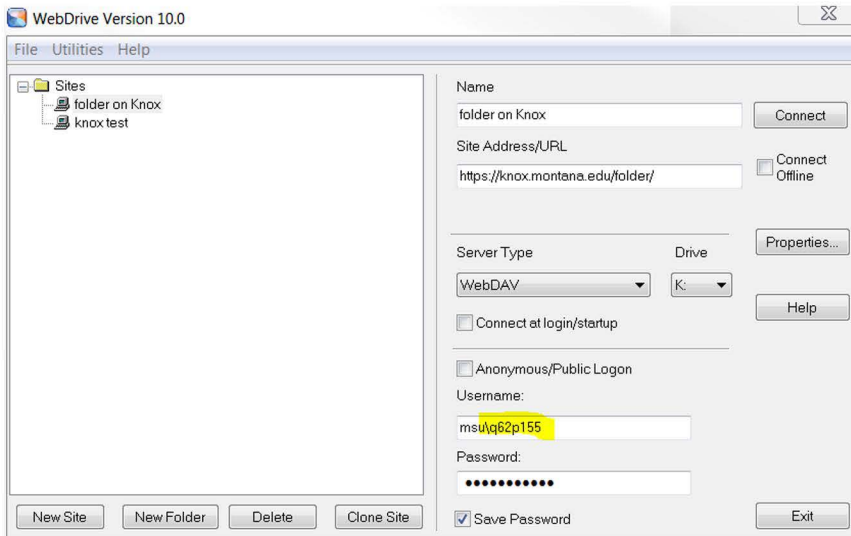


If you are getting an "Unauthorized" error when connecting to Knox with WebDrive, you must change the Username on the connection properties.

1. Go to Start / All Programs / WebDrive, click the WebDrive application icon
2. Under Sites, click the folder name of the Knox folder



3. Then, on the right, under Username, change the name to your NetID.



4. Try again to access your Knox folder.