

**MEMORANDUM**

**TO:** University Facilities Planning Board: Kregg Aytes - Chair, Walt Banziger - Vice Chair, Kurt Blunck, City of Bozeman, Chris Catlett, ASMSU President, Michael Everts, Chris Fastnow, Greg Gilpin, Brett Gunnink, Neil Jorgensen, ASMSU, Terry Leist, Robert Mokwa, Chris Kearns, Renee Reijo Pera, Faith Rifki, Tom Stump, Julie Tatarka, Jim Thull, David Kack, Leslie Schmidt, Keith Hamburg and Nicole Redding

**FROM:** Candace Mastel, Planner; Campus Planning, Design & Construction

**RE:** **July 18, 2017** meeting of the University Facilities Planning Board to be held in the **Facilities Meeting Quonset at 3:30 pm**

**ITEM No. 1 – APPROVAL OF NOTES**

Draft notes from June 20<sup>th</sup>, 2017 to be distributed before next meeting.

**ITEM No. 2 – EXECUTIVE COMMITTEE REPORT**

Report on any current Executive Committee actions

**ITEM No. 3 – CONSENT AGENDA**      **None**

**ITEM No. 4 – RECOMMENDATION**      **Eagle Sculpture Installation**  
**Presenter:**                      **Madison Graff**

**ITEM No. 5 – RECOMMENDATION**      **New Rodeo Storage Building**  
**Presenter:**                      **Randy Stephens**

**HORIZON ITEMS**

- **Interior Public Spaces Signage**
- **Turf Fields Facility Concept**
- **Renne Library Spaces & Technology Renovation**
- **External Building Signage Policy**
- **Master Planning Issues**
- **Revisit and Update Policies**
- **Second Phase of Garage Art**
- **Transportation Master Plan**
- **New Residence Hall Site Proposal**

CM/am

**PC:**

President Cruzado	Heidi Gagnon, VP Admin & Finance	Julie Kipfer, Communications
Amber Vestal, President’s Office	Jennifer Joyce, VP Student Success	Jody Barney, College of Agriculture
Maggie Hammett, President’s Office	Leslie Schmidt, Asst.VP Research Office	Susan Fraser, College of Agriculture
Julie Heard, Provost Office	Tony Campeau, Registrar	Robin Happel, College of Agriculture
ASMSU President	Robert Putzke, MSU Police	Elizabeth Schmidt, College of Business
Lisa Hespen, VP Admin & Finance	Becky McMillan, Auxiliaries Services	Candace Mastel, Campus Planning

<b>ITEM # X</b>	<b>Fighting Eagle Sculpture Installation</b>
-----------------	--

**PRESENTERS:**

Madison Graff, Data/Research Analyst

<b>PROJECT PHASE:</b>	<b>PLANNING</b>	<b>X</b>	<b>SCHEMATIC</b>	<b>DESIGN DOCUMENTS</b>	<b>CONSTRUCTION DOCUMENTS</b>
-----------------------	-----------------	----------	------------------	-------------------------	-------------------------------

**POTENTIAL LOCATIONS:**

Potential locations for suspending the statue include areas with high ceilings (stairwells, balconies, etc.). Aesthetics complimentary to the sculpture include natural lighting, atrium windows, and a space that fits the sculpture size.

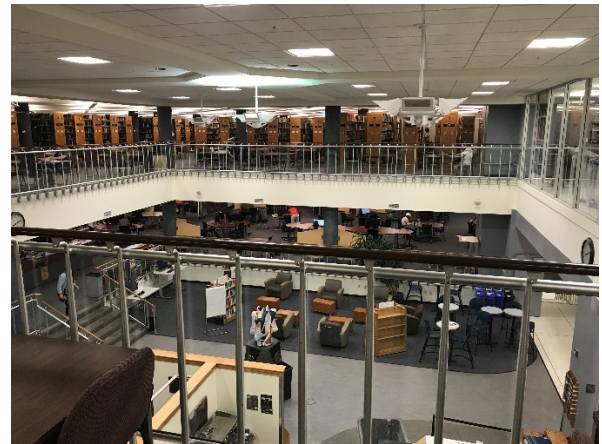
Potential locations include but are not limited to:

1. Renne Library: Suspended from the 2<sup>nd</sup> floor ceiling down into the 1<sup>st</sup> floor common area.
2. Renne Library: Suspended from the 4<sup>th</sup> floor ceiling down into the 3<sup>rd</sup> floor study area.
3. Reid Hall: Suspended from the 4<sup>th</sup> floor ceiling into the north stairwell atrium between the 3<sup>rd</sup> and 4<sup>th</sup> floor levels.



**Renne Library:**  
Location #1 (Right)  
Location #2 (Left)

**Reid Hall:**  
Location #3 (Bottom Images)  
Ceiling height is 12ft at bench.





**Example:**

The image to the left is an example of fighting eagles suspended in a multistory atrium. The placement of this sculpture natural lighting and the sky in the background makes the eagles look like they are in their natural environment. If placed in an area like the image to the left, people would be able to see the silhouette of the eagles from the outside looking in.

**STAFF COMMENTS:**

On June 19, 2017 the Public Art Committee reviewed and approved the artwork and the potential locations for the installation of the Fighting Eagles Sculpture, donated by a an alumni who's late husband (also an alumni) left this piece of art to MSU in his will.

PAC asks UFPB to recommend for approval the artwork and potential locations so that installation can occur as soon as possible this summer in interest of the donor.

The piece of art is made by Jim Dolan and measures about 6 feet wide and 3 feet high.

The desired location for the Fighting Eagles Sculpture will be determined. Jim Thull has given us note that the library may be interested in housing the piece; however other locations will be considered. The sculpture will be displayed indoors.

PAC asks UFPB to allow the desired locations of the Fighting Eagles Sculpture to be considered by staff for installation.



	<b>YES</b>	<b>NO</b>
<b>MSU POLICIES</b>	<b>X</b>	
<b>COMMITTEE OR APPROPRIATE REVIEW</b>	<b>X</b>	
<b>MASTER PLAN</b>	<b>X</b>	
<b>BOARD ACTION REQUIRED:</b>		
<p><b>Approve the installation of the Fighting Eagles Sculpture and the identified potential locations, as proposed.</b></p>		

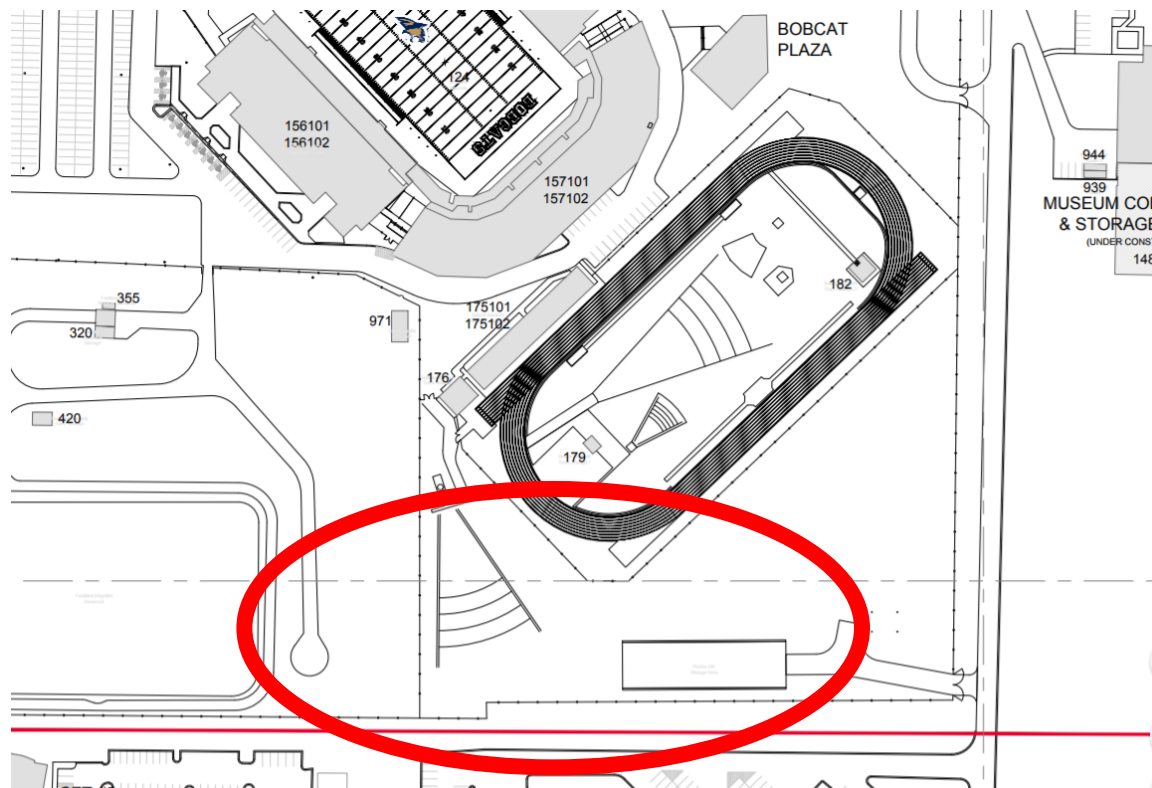
<b>ITEM # 5</b>	<b>New Rodeo Storage Building</b>
-----------------	-----------------------------------

**PRESENTERS:**

Randy Stephens, University Architect

<b>PROJECT PHASE:</b>	<b>PLANNING</b>	<b>SCHEMATIC</b>	<b>DESIGN DOCUMENTS</b>	<b>X</b>	<b>CONSTRUCTION DOCUMENTS</b>
-----------------------	-----------------	------------------	-------------------------	----------	-------------------------------

**VICINITY MAP:**



**STAFF COMMENTS:**

In the past year, new rodeo chutes have been purchased for the annual MSU Spring Rodeo – held in the Brick Breeden Fieldhouse. The chutes and plywood panels are currently stored without protection, adjacent to the rodeo dirt storage area south of the track. To protect this investment, Sports Facilities has requested to construct a 20’ x 48’ open-sided storage building and move all chutes and plywood into this structure. The building is planned to be built as a pole-barn structure with metal siding and roofing, with one open side. No utilities to the structure are included. Security of the site is provided by a locked gate at the entrance off of the 7<sup>th</sup> Street extension.

The proposed site considers long-range planning for this area of campus, a future access drive to the rodeo dirt storage area, and shared use with the Logger Sports Club activities.

CPDC is presenting this request on behalf of Sports Facilities.

<b>COMPLIANCE:</b>	<b>YES</b>	<b>NO</b>
<b>MSU POLICIES</b>	<b>X</b>	
<b>COMMITTEE OR APPROPRIATE REVIEW</b>	<b>X</b>	
<b>MASTER PLAN</b>	<b>X</b>	
<b>BOARD ACTION REQUIRED:</b>		
<b>Requesting UFPB to recommend the proposed site to the President.</b>		

P:\UFPB\FORMS\UFPB Staff Report Form 2010.docx





**RODEO DIRT**  
SITE RENOVATION

CAMPUS PLANNING,  
DESIGN & CONSTRUCTION  
MONTANA STATE UNIVERSITY  
POZZI HALL, MONTANA  
PHONE: 406.994.5413 FAX: 406.994.5665

PRELIMINARY - NOT FOR CONSTRUCTION

DRAWN BY:

REVIEWED BY:

REV.	DESCRIPTION	DATE
1		

--	--	--

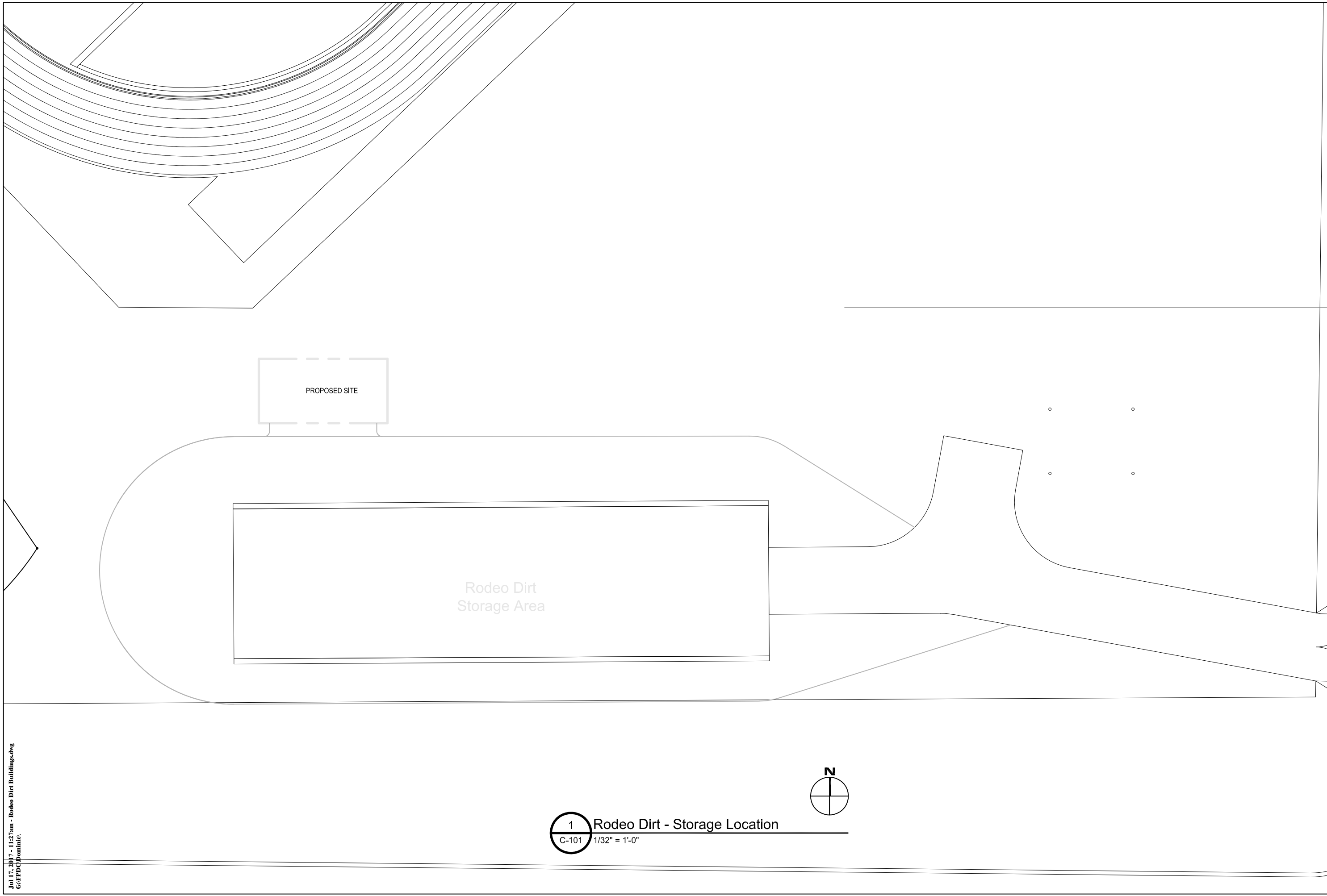
PPA#00-0000

A/E#00-00-00

SHEET TITLE  
PROPOSED  
LOCATION

SHEET  
**C-101**

DATE  
00-00-00



1 Rodeo Dirt - Storage Location  
C-101 1/32" = 1'-0"

