

## MEMORANDUM

TO: University Facilities Planning Board: Nancy Cornwell - Chair, Walt Banziger - Vice Chair, Kurt Blunck, Allyson Brekke, Jeff Butler, ASMSU President, Michael Everts, Chris Fastnow, Greg Gilpin, Brett Gunnink, Neil Jorgensen, Shad Cristando – ASMSU, Terry Leist, Chris Kearns, Martha Potvin, Fatih Rifki, Tom Stump, Julie Tatarka, Jim Thull, Brenda York

FROM: Victoria Drummond, Assoc. University Planner; Campus Planning, Design & Construction

RE: **December 2, 2014**, meeting of the University Facilities Planning Board to be held in the **Facilities Meeting Quonset at 3:30 pm**

### ITEM No. 1 – APPROVAL OF NOTES

Draft notes from November 18, 2014 to be distributed before next meeting. **Note: please discuss if there will be a meeting on December 16, 2014**, based on end of semester and Commencement.

### ITEM No. 2 – EXECUTIVE COMMITTEE REPORT

**Furniture Order for Cheever DSEL Lab Space:** The College of Arts and Architecture will utilize the existing space (DSEL Lab), as is, with the newly purchased furniture. The requested changes at this time do not include architectural, mechanical or electrical modifications. Any architectural, mechanical, and or electrical modifications necessary or desired by the College of Arts & Architecture will be done at a later date. The expedited order is necessary to accommodate class scheduling of the space for the Spring 2015.

ITEM No. 3 – CONSENT AGENDA - No items

ITEM No. 4 –RECOMMENDATION - Modern Languages Bamboo Wall Rack  
Presenter – Candace Mastel

ITEM No. 5 –RECOMMENDATION - CAC Collision Spaces Design – Cheever, VisCom, and Howard  
Presenter – Jillian Bertelli

ITEM No. 6 –RECOMMENDATION - DSEL (Design Sandbox for Engaged Learning)  
Presenter – Randy Stephens

ITEM No. 7 –INFORMATIONAL - Norm Asbjornson Innovation Center Update  
Presenter –Sam Des Jardins

ITEM No. 8 –INFORMATIONAL - Chalking on Sidewalks  
Presenter – EJ Hook

ITEM No. 9 –INFORMATIONAL - Update on Relocation EHHD Performance Labs  
Presenter – Darryl Curfman

### HORIZON ITEMS

- Illuminated Exterior Display Board East Julia Martin
- External Building Signage Policy
- Seminar Materials
- Master Planning Issues
- Revisit and Update Policies
- HBO5 Amendment for Lab Facility

VCD/lsh

PC:

President Cruzado  
Melissa Hill, President's Office  
Maggie Hammett, President's Office  
Keely Holmes, Provost Office  
ASMSU President  
Diane Heck, VP Admin & Finance

Heidi Gagnon, VP Admin & Finance  
Jennifer Joyce, VP Student Success  
Linda LaCrone, VP Research Office  
Bonnie Ashley, Registrar  
Robert Putzke, MSU Police  
Becky McMillan, Auxiliaries Services

Julie Kipfer, Communications  
Jody Barney, College of Agriculture  
Susan Fraser, College of Agriculture  
Robin Happel, College of Agriculture  
JoDee Palin, College of Arts & Arch  
Victoria Drummond, Campus Planning

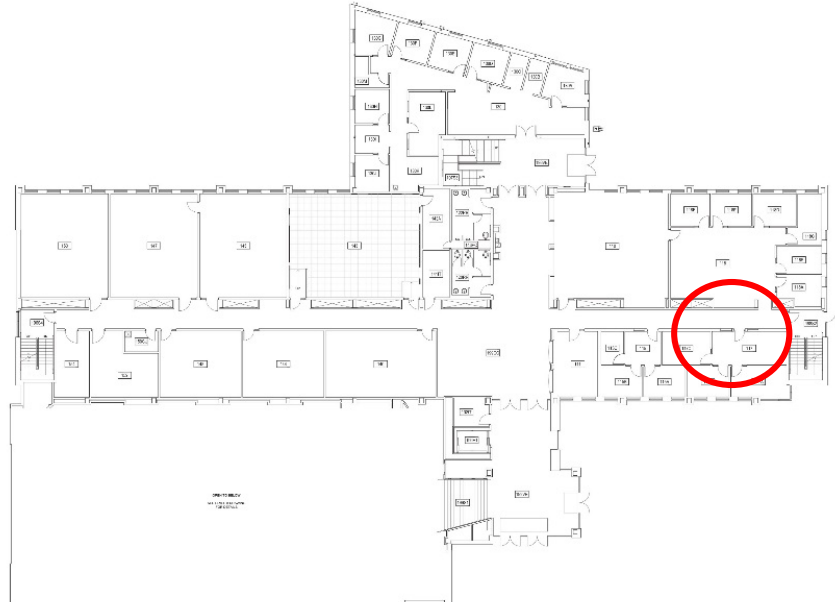
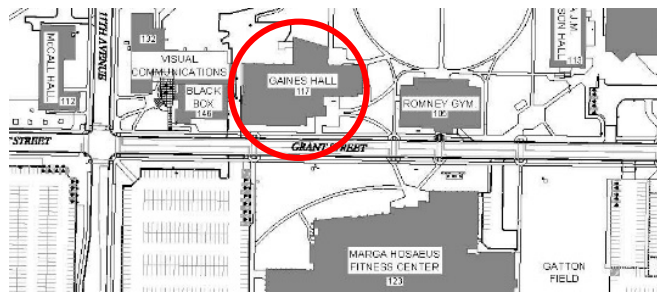
<b>ITEM # 4</b>	<b>Modern Languages Bamboo Wall Rack</b>
-----------------	--

**PRESENTERS:**

Candace Mastel, Assistant Planner

<b>PROJECT PHASE:</b>	PLANNING	<b>X</b>	SCHEMATIC	DESIGN DOCUMENTS	CONSTRUCTION DOCUMENTS
-----------------------	----------	----------	-----------	------------------	------------------------

**VICINITY MAP:**



**STAFF COMMENTS:**

The Modern Languages department has requested permission to hang a bamboo wall rack to display flyers and departmental/class information on the wall directly across from their departmental offices on the first floor of Gaines Hall. The rack would be installed to the left of an existing bulletin board.

The bamboo wall rack measures 28” wide by 40” tall by 2.5” deep. The rack meets the depth requirements of ADA. It will further be installed at the correct height of 27” from the floor to meet other ADA requirements. In addition, Planning has discussed the issue with Skip Houglund, of Safety and Risk Management, to ascertain if the rack will negatively influence the coverage restrictions for wall coverings. Skip has confirmed that it does not.

The rack is well constructed of bamboo and matches the rest of the interior treatments within the building. The materials contained within the rack will be monitored and maintained by the Modern Languages department.



Proposed Bamboo Wall Rack



Install Location

	YES	NO
<b>MSU POLICIES</b>	<b>X</b>	
<b>COMMITTEE OR APPROPRIATE REVIEW</b>	<b>X</b>	
<b>MASTER PLAN</b>	<b>X</b>	
<b>BOARD ACTION REQUIRED:</b>		
<b>Recommend approval of installation of bamboo wall rack in the Modern Languages hallway of Gaines Hall, across from departmental offices.</b>		

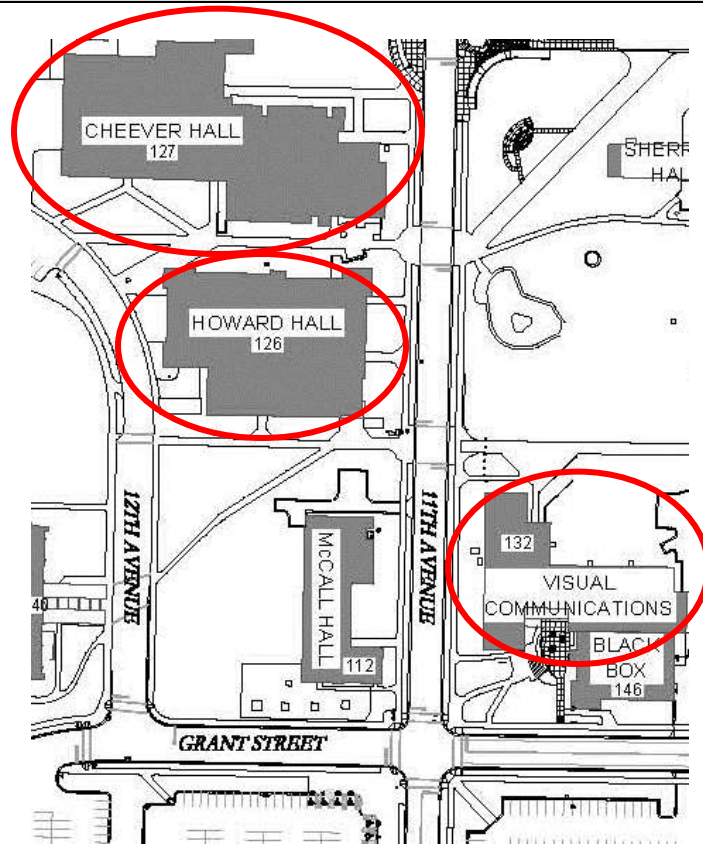
<b>ITEM #</b>	<b>Creative Arts Complex – Collision Spaces for Cheever, VisCom, &amp; Howard</b>
---------------	---

**PRESENTERS:**

Jillian Bertelli, Staff Architect

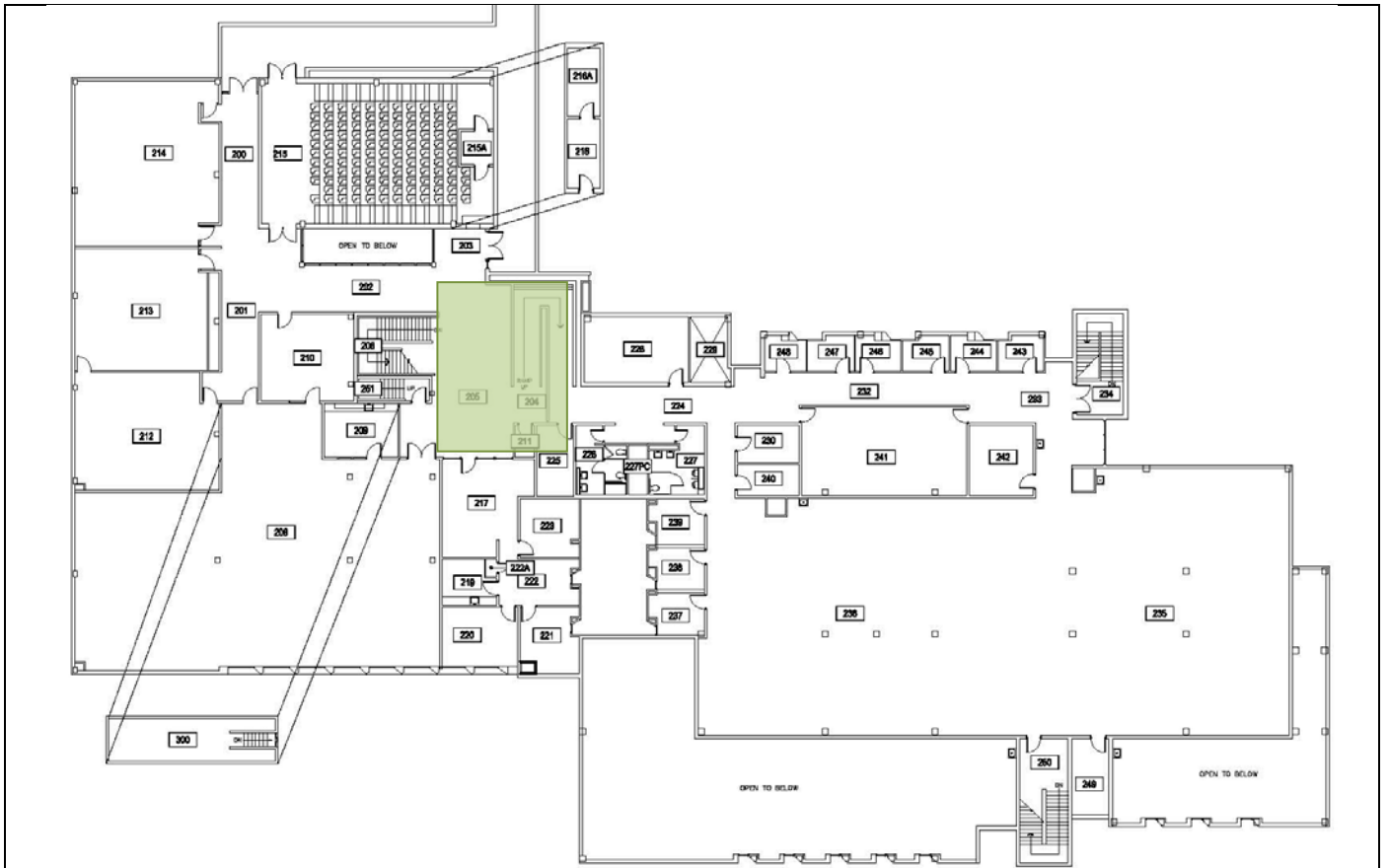
<b>PROJECT PHASE:</b>	PLANNING	SCHEMATIC	DESIGN DOCUMENTS	<b>X</b>	CONSTRUCTION DOCUMENTS
-----------------------	----------	-----------	------------------	----------	------------------------

**VICINITY MAP:**



**STAFF COMMENTS:**

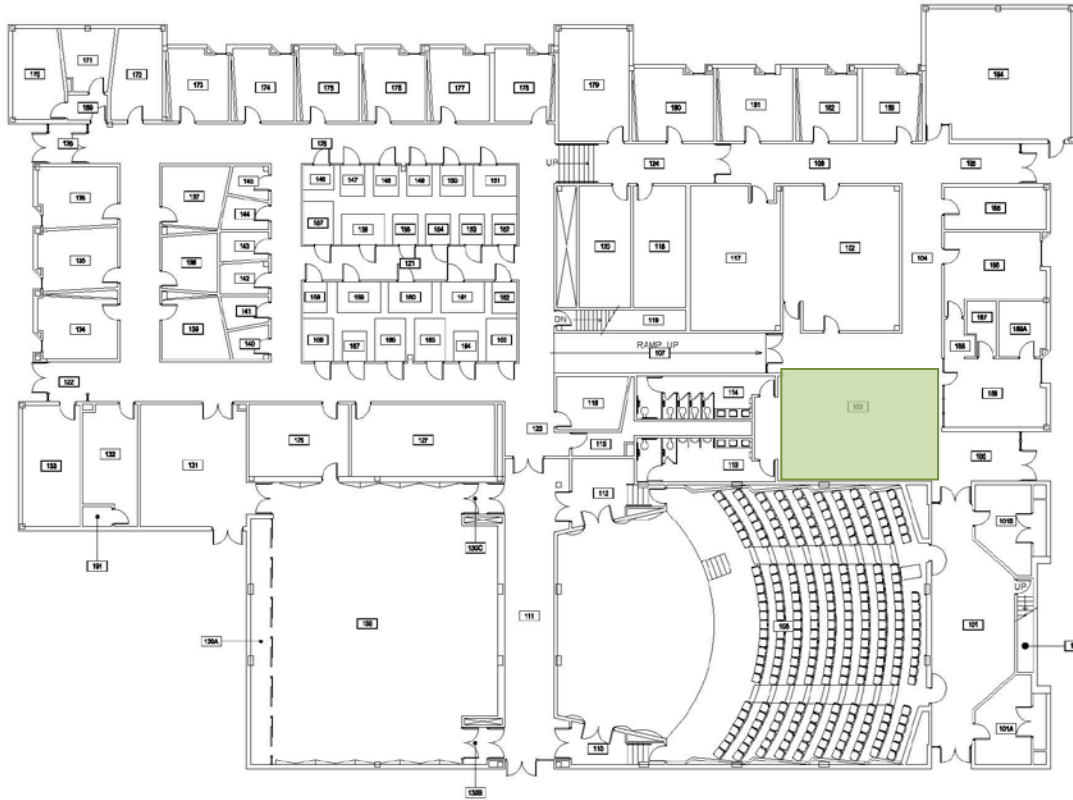
Nancy Cornwell contacted CPDC to make design improvements and purchase furniture to several public spaces within the Creative Arts Complex. The improvement to the public spaces combined efforts with a Design Build class through the Architecture School, and students have built furniture for Cheever Hall second floor space, for class credit with a professor’s oversight. The design intent is to foster happenstance meetings, share ideas, and spark collaborations between faculty, students and staff. The furniture purchases are for Cheever Hall 2<sup>nd</sup> floor, VisCom south entry & lower gathering space, and Howard lobby.



Cheever Collision Space – 2<sup>nd</sup> floor



VisCom Collision Space – south entry and lower gathering space



Howard Collision Space - Lobby

COMPLIANCE:	YES	NO
MSU POLICIES	X	
COMMITTEE OR APPROPRIATE REVIEW	X	
MASTER PLAN	X	
<b>BOARD ACTION REQUIRED:</b>		
<b>Approve designs before furniture purchases, and construction of gallery wall.</b>		

P:\UFPB\AGENDA & MEMOS\2014 Agenda\Meeting 12-02-2014\#5 CAC Collision Spaces Design.docx

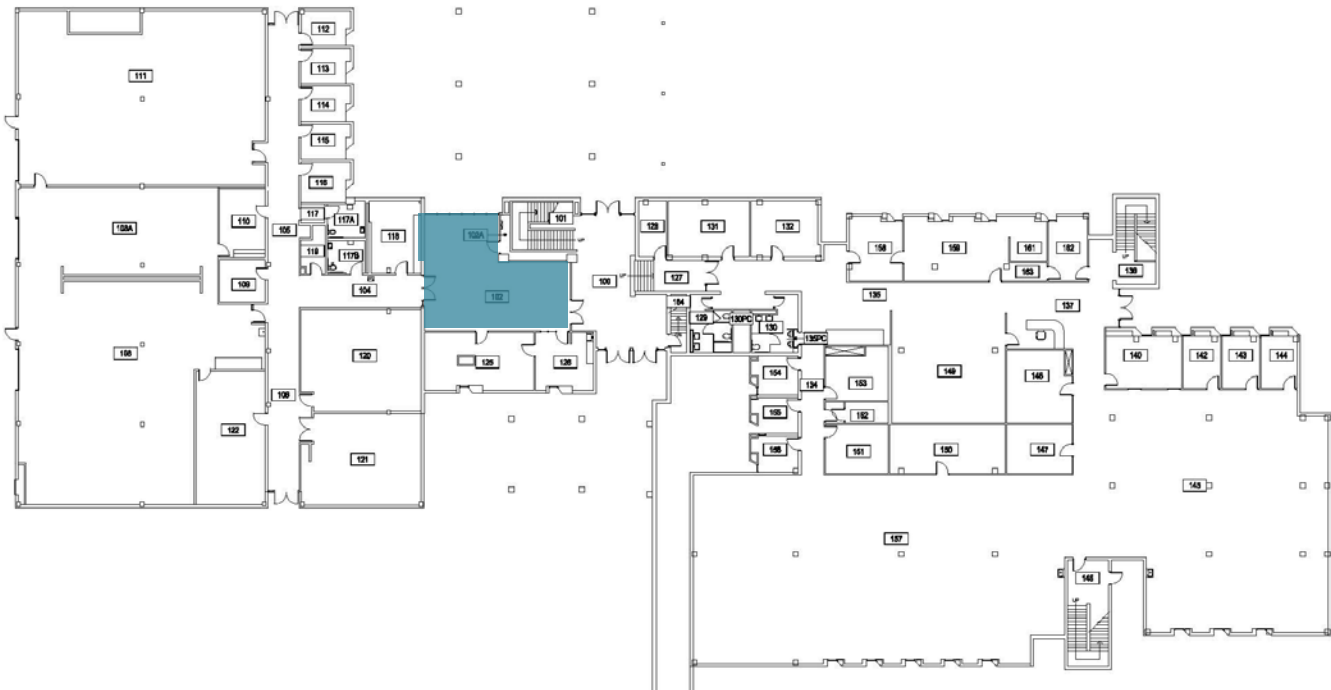
<b>ITEM # 6</b>	<b>DSEL – Design Sandbox for Engaged Learning in Cheever Hall</b>
-----------------	---

**PRESENTERS:**

Randy Stephens, University Architect

<b>PROJECT PHASE:</b>	<b>PLANNING</b>	<b>SCHEMATIC</b>	<b>DESIGN DOCUMENTS</b>	<b>X</b>	<b>CONSTRUCTION DOCUMENTS</b>
-----------------------	-----------------	------------------	-------------------------	----------	-------------------------------

**VICINITY MAP:**



**Cheever Hall 1<sup>st</sup> Floor**

**STAFF COMMENTS:**

Colleges of Arts and Architecture, Engineering, Business, Dept. of Psychology, and potential partnerships with Gallatin College and the MSU Library This proposed “lab” will provide MSU students with a space to experiment, brainstorm, and prototype simple solutions to problems involving products, space, processes, organizational structures, etc. It would be a material rich environment, with resources and flexible spaces that stimulate collaboration, spontaneous brainstorming, sharing and experimentation with simple materials. (MSU Strategic Proposal for Institutional Priorities)

From the Dean’s 2012 Strategic Investment Proposal:

“Creative thinking and design thinking principles are increasingly desired as problem solving strategies in professional fields. Business, engineering and fields involved in technological innovation have embraced

these iterative, abductive, intuitive (not based solely on logical inference), experimental approaches whose origins lie in the creative disciplines. This proposal is designed to help establish university-wide opportunities to explore creative thinking and design through the development of a cross-college degree program, a university seminar and the establishment of a university-level Design Sandbox for Engaged Learning (DSEL).”

The College is proposing to use Cheever 102 as the space to support the DSEL program. The space is approx. 895 sf, is coded as instructional lab space, and is occasionally used for studio presentations, break out space for studio courses, or informal study. The space also currently serves as circulation space connecting corridors 100 to 104. Unless other physical changes are made, circulation through the space must be maintained. Cheever 102 is adjacent to one of the main entrances to the building giving opportunity to showcase this program and engage many students and faculty. As a starting point, this request to UFPB is for the placement of flexible furniture within the space, without any other modifications. The furniture (tables, chairs, portable storage/work stations) is intended to be movable, adaptable to the flexibility of the space that the program desires, and is commercial-grade, suitable for public spaces.

<b>COMPLIANCE:</b>	<b>YES</b>	<b>NO</b>
<b>MSU POLICIES</b>	<b>X</b>	
<b>COMMITTEE OR APPROPRIATE REVIEW</b>	<b>X</b>	
<b>MASTER PLAN</b>	<b>X</b>	
<b>BOARD ACTION REQUIRED:</b>		
<b>Approve designs.</b>		

P:\UFPB\AGENDA & MEMOS\2014 Agenda\Meeting 12-02-2014\#6 DSEL.docx

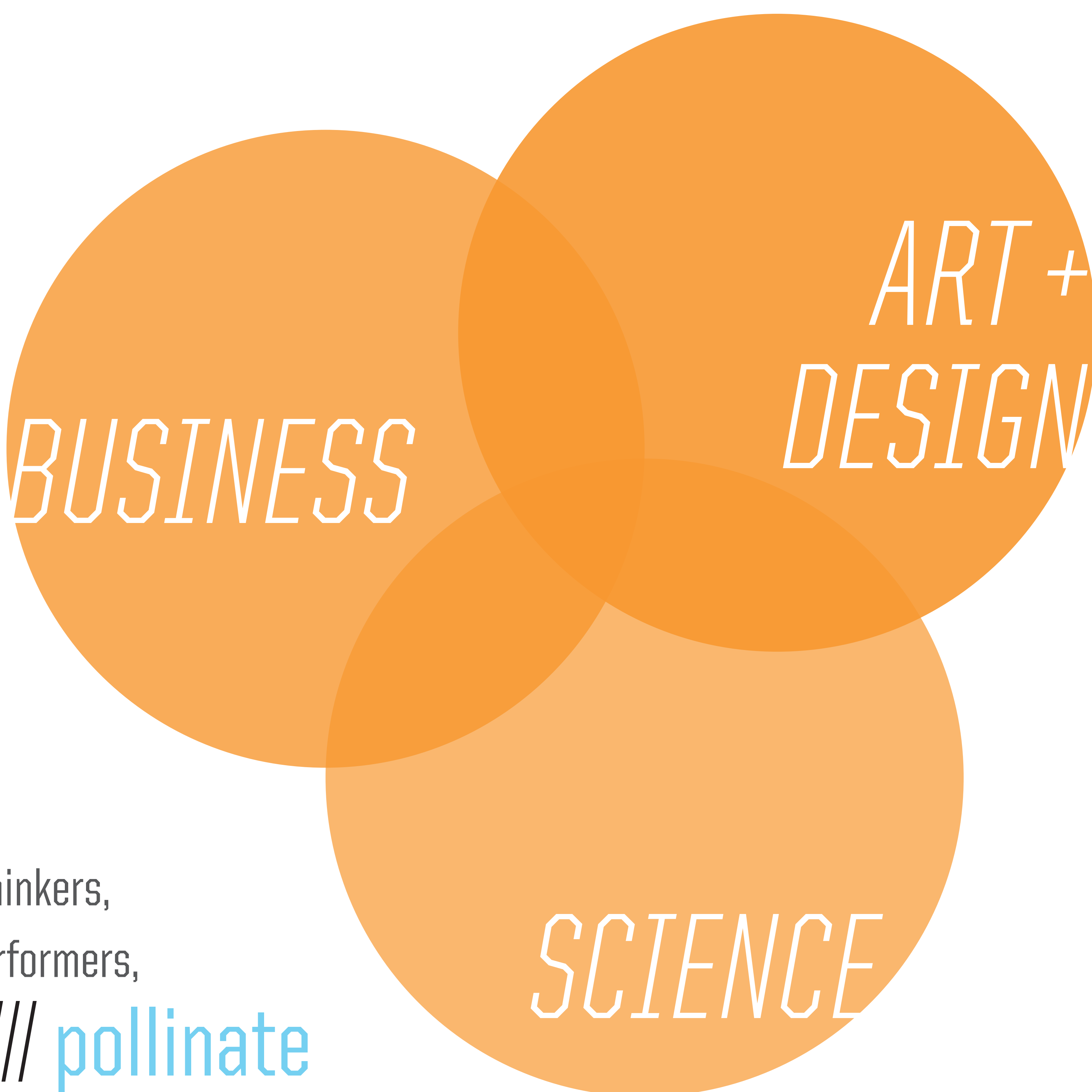


# what is DSEL?

THE DESIGN SANDBOX FOR ENGAGED LEARNING

DSEL is an interdisciplinary collaboration space where faculty, students and industry professionals all come together *using design thinking* to solve a myriad of challenges, both social and professional in practice.

A space where design, engineering, business and other disciplines would collaborate and work together in DSEL-sponsored courses.

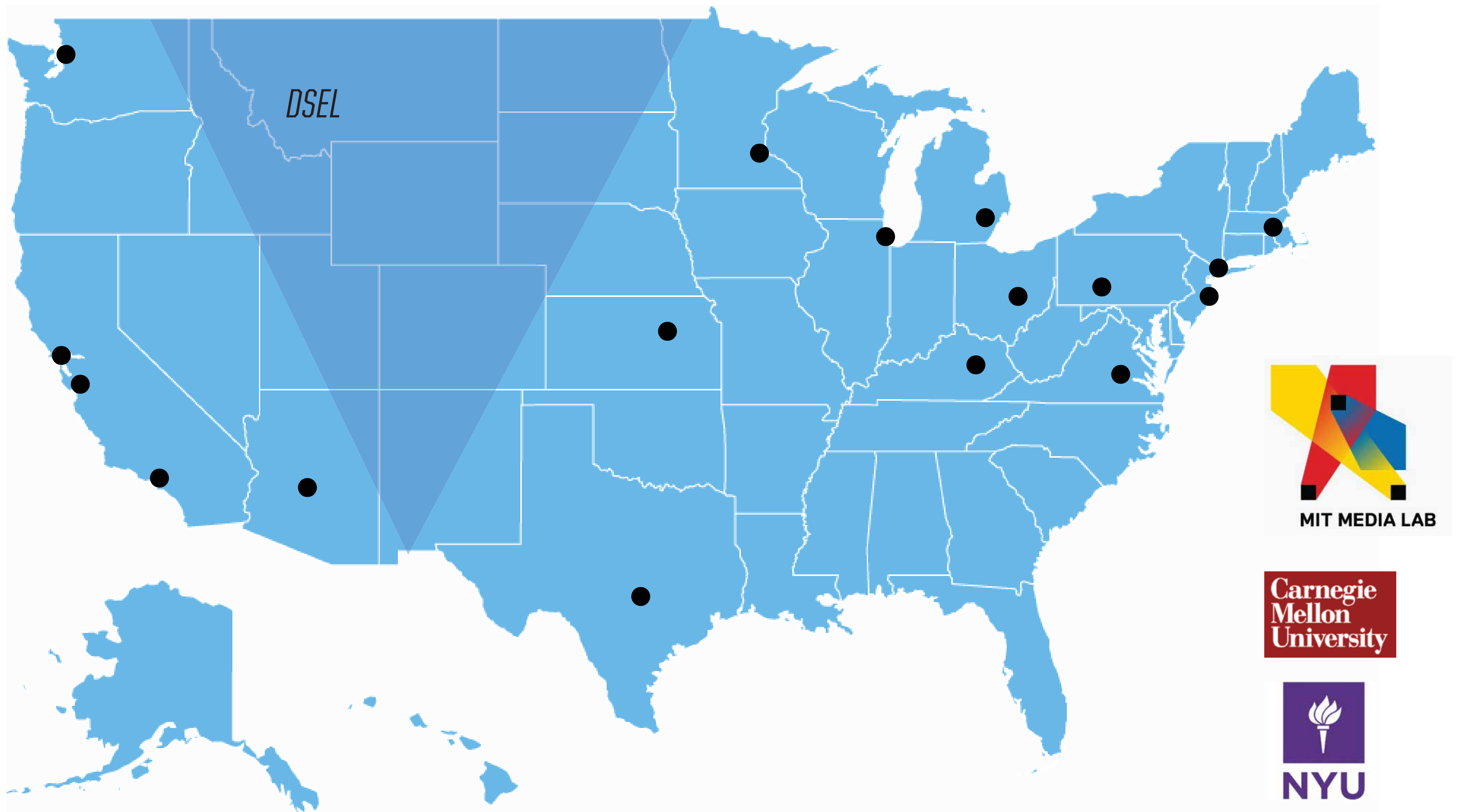


Builders + thinkers,  
writers + performers,  
**cross** /// **pollinate**  
in one creative hub.



# why here, why now.

DSEL IS UNIQUELY SITUATED



*DSEL has little competition in the Rocky Mountain West. This is a huge opportunity for Montana State University to be seen as a leader in collaborative problem solving.*



DSEL courses can run assignments that will enable students to take ideas to MSU's Blackstone LaunchPad, for mentoring, networking and advice on how to take those ideas to fruition.

**Blackstone** LaunchPad



# what's next

## DSEL BASED COURSES

### FALL 2014

#### *Design/Build Course*

Bradford Watson [CAA] and Bill Clinton [CAA]

Architecture students have taken on the real-world project of transforming a former student lounge and office space into DSEL's need for space that facilitates lecture, breakout ideation sessions and critique.

### SPRING 2015

#### *Innovative Ideation*

Jim Oakley [COB]; Jake Cook [COB]; Jay Zignego [COE]  
and Meta Newhouse [CAA]

The course will provide opportunities for marketing, engineering and CAA students to participate in ideation processes using design thinking, understand user experience, and customer journey mapping, working from idea to development to actualization.

#### *Honors Seminar: Design Thinking for our Community*

Durward Sobek [COE] and Mandy Rutherford [COE]

This course is open to all Honors students, who will team across discipline boundaries and learn the fundamentals of innovation and design thinking in the context of service to community.

### FALL 2015 (TENTATIVE)

#### *Farm-to-Market* Graham Austin [COB]; Meta Newhouse [CAA]; and Alison Harmon [CEHHD]

Marketing, EHHD, agriculture and design students practice the DSEL design processes in an effort to help Montana small farmers take a product to market. Students will take strides to understand their assigned farm; define an opportunity; invent a product that farm can produce; then name, brand and market that product.

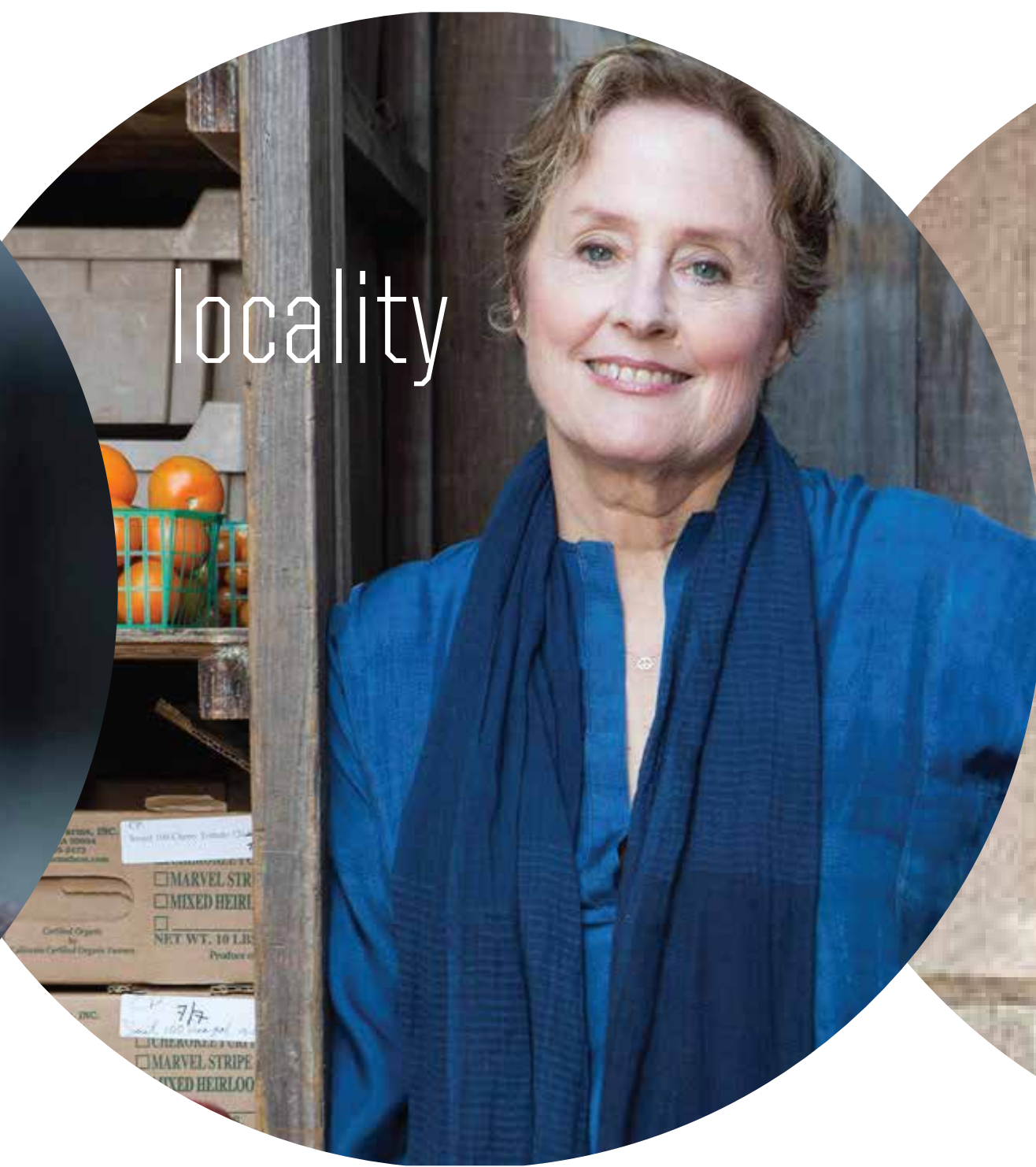
*Have an idea  
for a DSEL course?*

Please contact Meta Newhouse,  
Founding Director, DSEL  
meta.newhouse@montana.edu  
to discuss schedule, materials  
needed and funding for team teaching.



# future possibilities

DSEL WILL SPONSOR GUEST INSTIGATORS AND RESIDENT PROVOCATEURS



*Part of DSEL's budget will be allocated to bring in great thinkers and makers from various disciplines for workshops, open lectures and residencies. Guests will support content in DSEL-based courses AND be expected to inspire inventive problem solving among MSU's students and faculty across the university.*



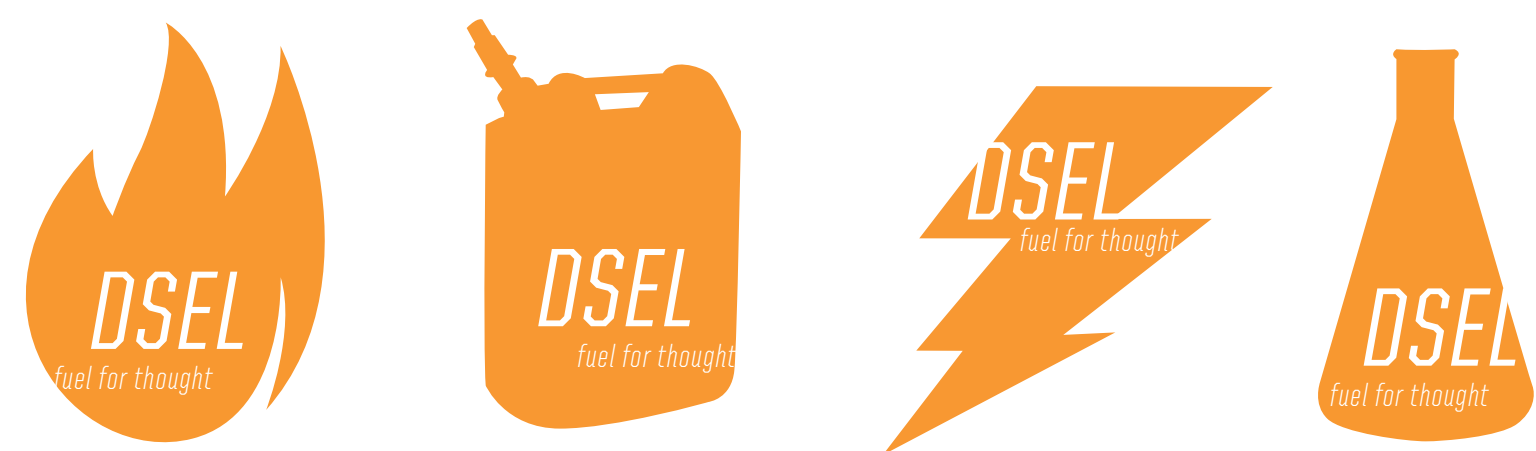
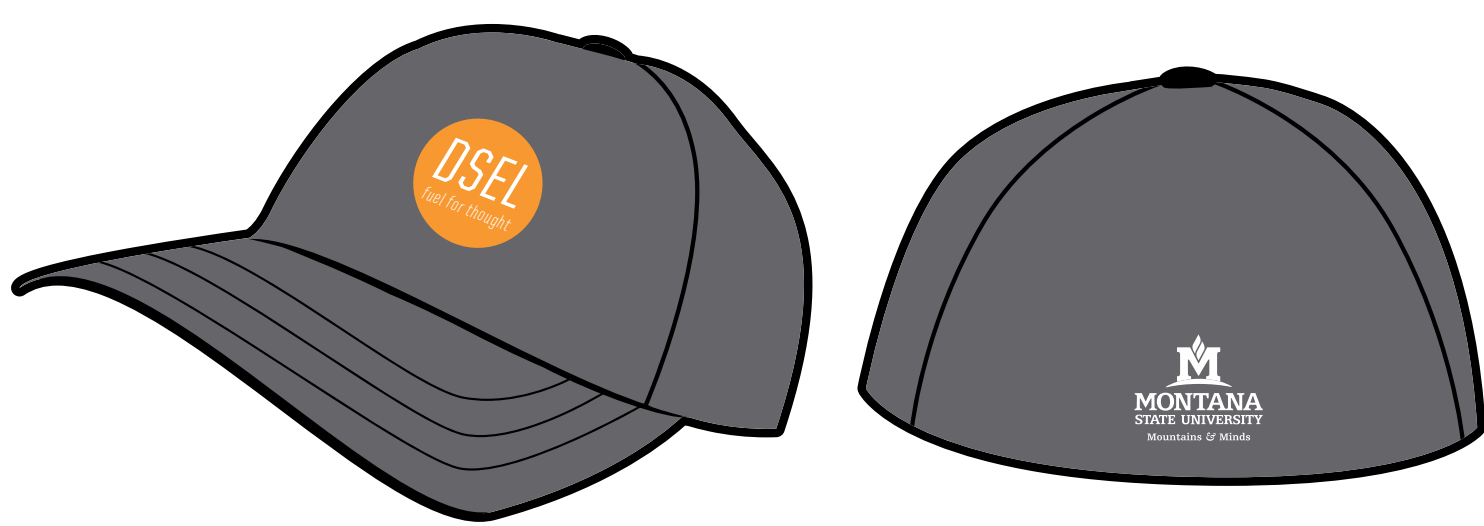
# other graphics

## OTHER WAYS TO COMMUNICATE THE DSEL BRAND



Ghost signs are a recognized part of Montana's landscape. The DSEL space needs to own what makes it different, and one way to do that is to be unapologetically, resolutely Montanan.

One idea we are considering is creating a mural with the DSEL tagline – *Fuel for Thought* – onto the main brick wall. We would use wire brushes to remove the majority of the paint in order to give it the look and feel of a vintage ghost sign.

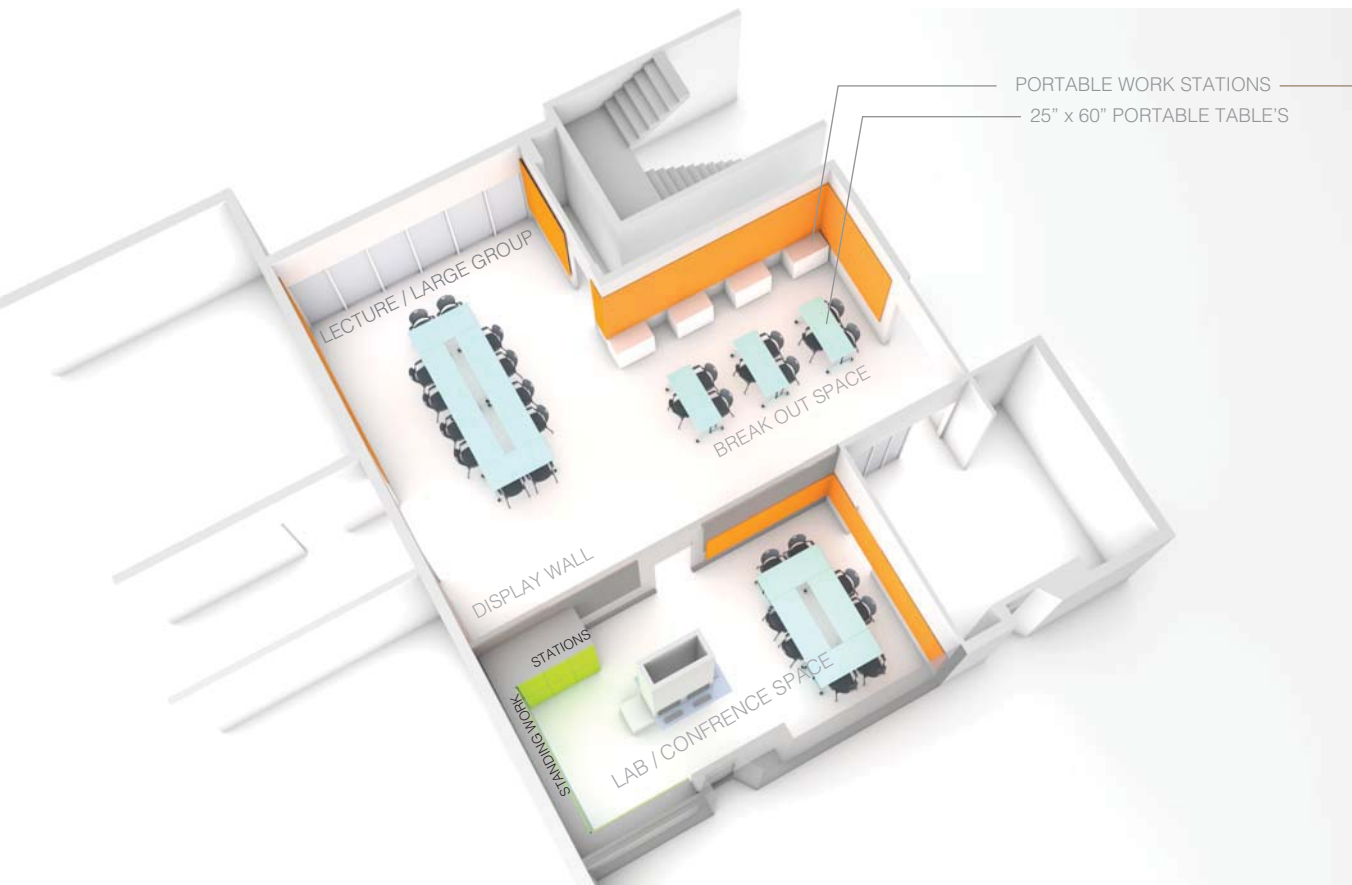


Employing orange and dark cool gray colors, the United typeface family and modular shapes to extend the reach of the DSEL brand.



# DSEL [design sandbox for engaged learning]

SPACE CONFIGURATION | BREAK OUT | MULTIFUNCTION STORAGE/WORK SURFACE



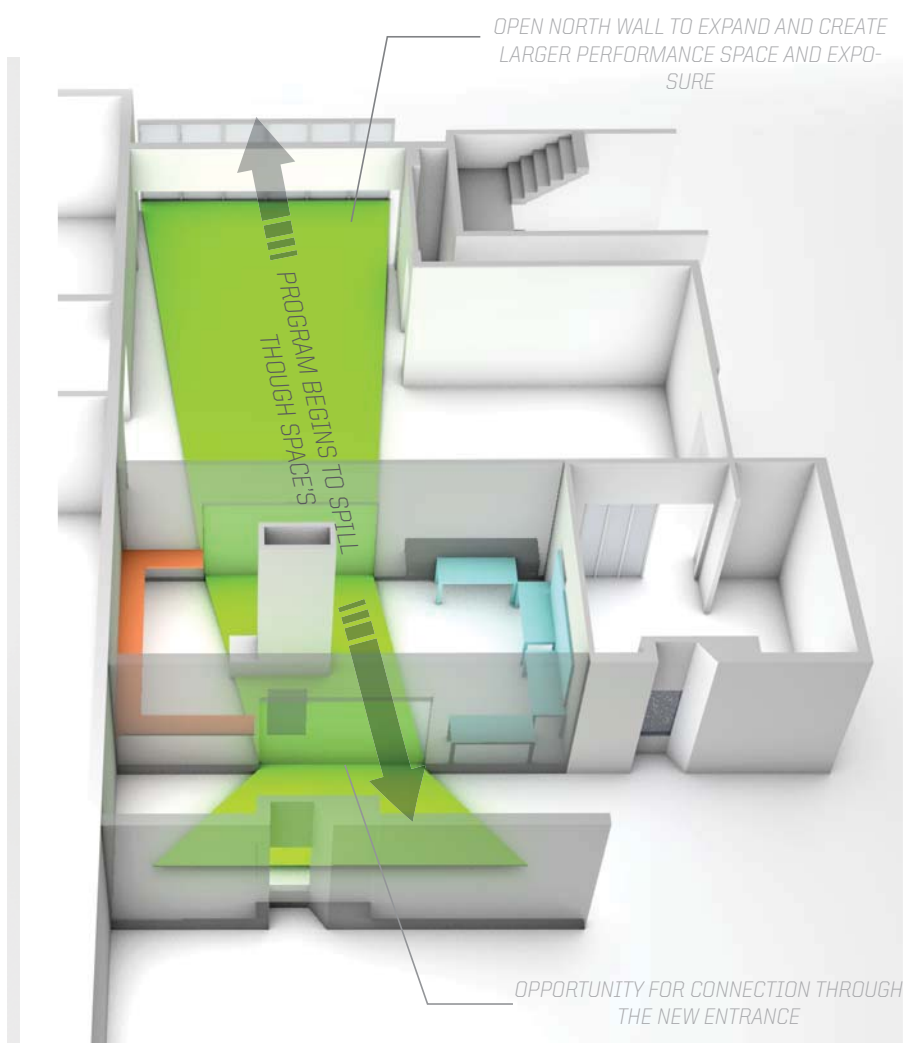
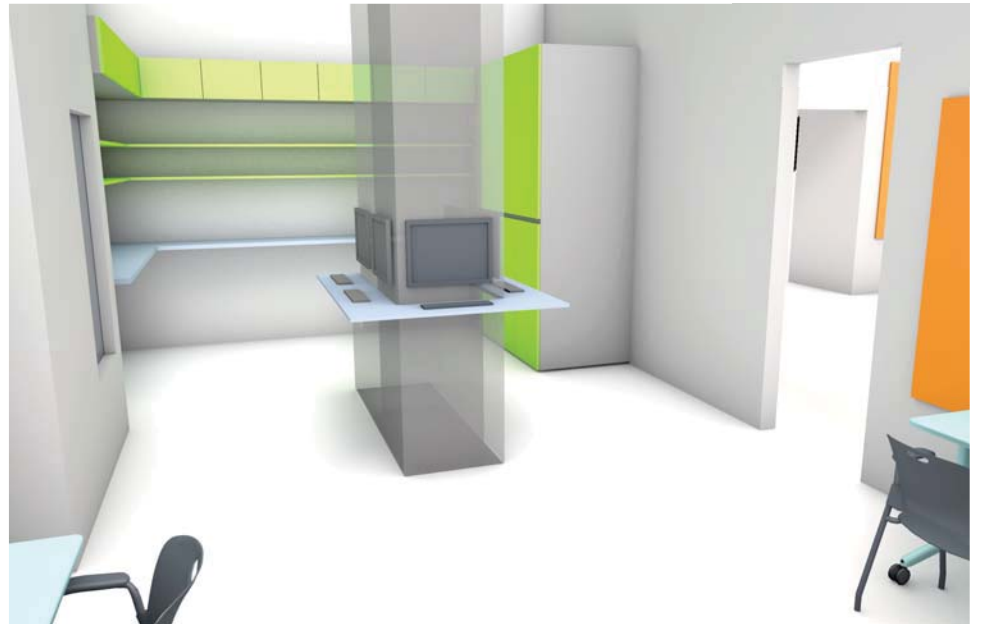
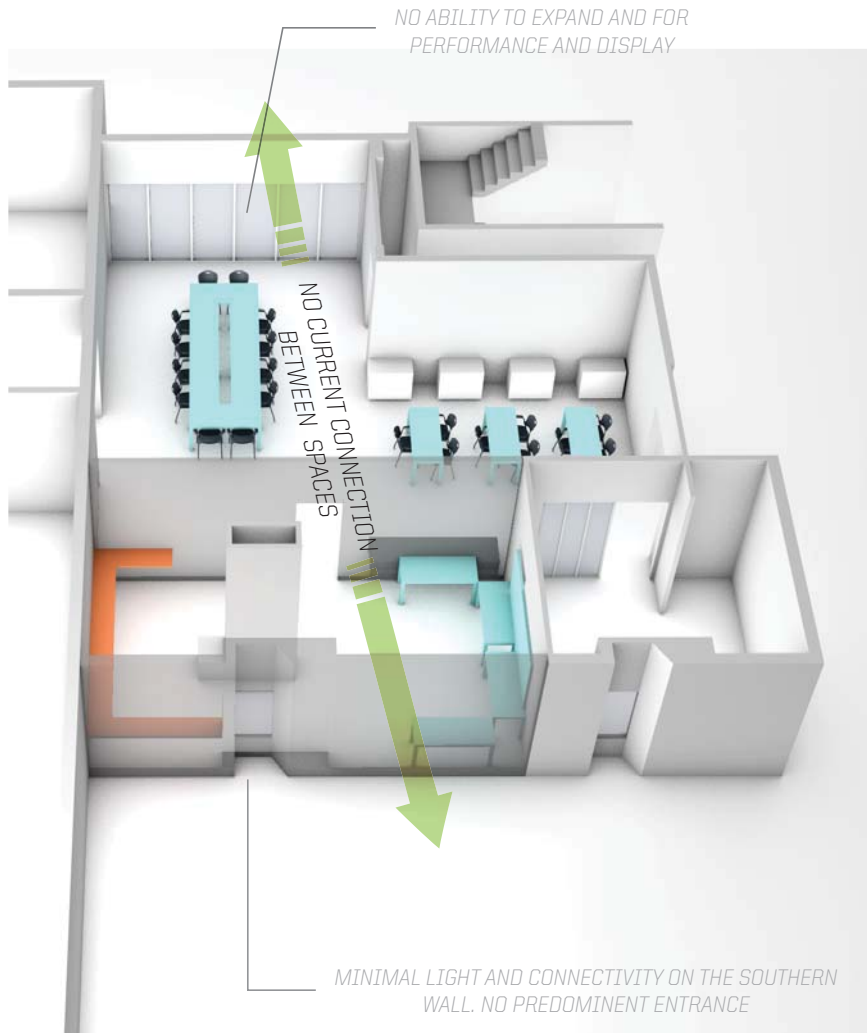
# DSEL [design sandbox for engaged learning]

SPACE CONFIGURATION | CLASSROOM | AWARE TABLE



# DSEL [design sandbox for engaged learning]

SPACE CONFIGURATION | VISUAL ENHANCEMENT | STORAGE ROOM RECONFIGURE





# DSEL [design sandbox for engaged learning]

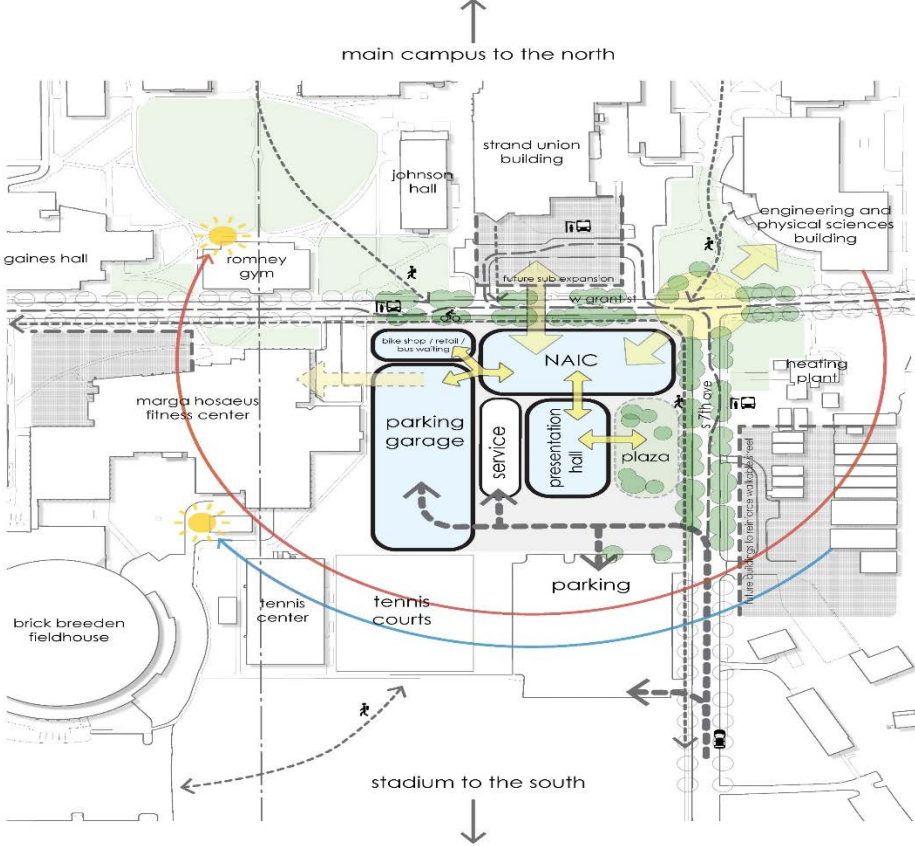
SPACE USAGE | MULTIFUNCTION USE



# DSEL [design sandbox for engaged learning]

SPACE CONFIGURATION | LECTURE | INSPIRE STACKABLE SEATING



<b>ITEM # 7</b>		<b>Norm Asbjornson Innovation Center (NAIC) Project Update (Parking Solutions &amp; Presentation Hall)</b>				
<b>PRESENTERS:</b>						
Walt Banziger & Sam J. Des Jardins						
<b>PROJECT PHASE:</b>	<b>PLANNING</b>	<input checked="" type="checkbox"/> <b>SCHEMATIC</b>	<b>DESIGN DOCUMENTS</b>	<b>CONSTRUCTION DOCUMENTS</b>		
<b>VICINITY MAP:</b>						
						
<b>STAFF COMMENTS:</b>						
Walt and Sam will be presenting the following updates: <ul style="list-style-type: none"> <li>- Project status update – where they are in terms of programming</li> <li>- NAIC</li> <li>- Parking Solutions</li> <li>- Presentation Hall</li> </ul>						
<b>COMPLIANCE:</b>				<b>YES</b>	<b>NO</b>	
<b>MSU POLICIES</b>				<b>X</b>		
<b>COMMITTEE OR APPROPRIATE REVIEW</b>				<b>X</b>		
<b>MASTER PLAN</b>				<b>NA</b>		
<b>BOARD ACTION REQUIRED:</b>						
No Action Needed - informational						

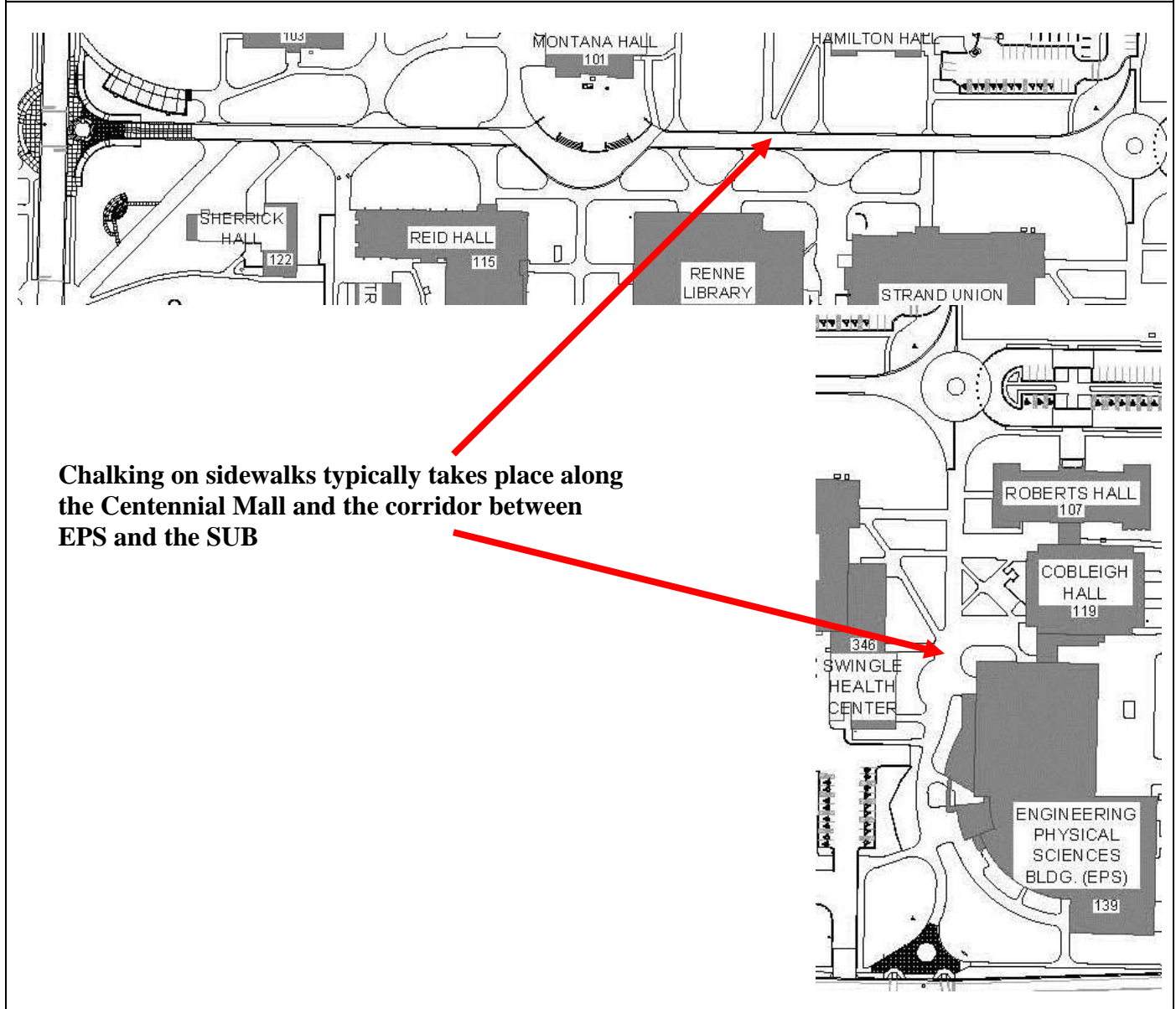
<b>ITEM # 8</b>	<b>Chalking on Sidewalks</b>
-----------------	------------------------------

**PRESENTERS:**

E.J. Hook, Environmental Services manager

<b>PROJECT PHASE:</b>	<b>PLANNING</b>	<b>X</b>	<b>SCHEMATIC</b>	<b>DESIGN DOCUMENTS</b>	<b>CONSTRUCTION DOCUMENTS</b>
-----------------------	-----------------	----------	------------------	-------------------------	-------------------------------

**VICINITY MAP:**



**Chalking on sidewalks typically takes place along the Centennial Mall and the corridor between EPS and the SUB**

**STAFF COMMENTS:**

Historical uses for marking on sidewalks are Catapalooza booth marking, running course layout/directionals, color runs, and, more recently promoting student club events, donation drives, and sponsored campus events.

**Problem Statement** - Using the paved surfaces of our campus as a means of promoting events on campus and/or as a medium for promoting ones message has become an increasingly popular option. The primary area used for these purposes is along the Mall, major mall pathway intersections and along the corridor between EPS and the SUB. This raises two core issues—

- Aesthetic of campus
- Potential damage to facilities

**The process** - The current process used to approve outdoor events and practices is Outdoor Program Request (OPR) which is managed by the office of Activities and Engagement. This process is used for all outdoor events and requires approval by Facilities, Auxiliary Services, and University Police for the event to occur. For sidewalk marking requests, approval is contingent upon the use of chalk as the media (spray chalk or sidewalk chalk). Through experience the process has added the requirement for removal of any chalk residual within 7 days of it being placed; removal is the responsibility of the requestor. To date the OPR process has been used successfully to manage running course layout and several other events/occurrences like Catapalooza booth layout, the solar system to scale, and student club events. Most recently Health Promotions, with OPR approval, used spray chalk to promote their Homecoming outdoor movie event using spray chalk. The promotion was prominent and extensive which led to questions about the appropriateness of this practice.

**PHOTOS**

**Movie Night**



**Bone Marrow Drive**



**Race arrows**



**Catapalooza numbers**



<b>COMPLIANCE:</b>	<b>YES</b>	<b>NO</b>
<b>MSU POLICIES</b>	<b>X</b>	
<b>COMMITTEE OR APPROPRIATE REVIEW</b>		<b>X</b>
<b>MASTER PLAN</b>		<b>X</b>
<b>BOARD ACTION REQUIRED:</b>		
Seeking UFPB advice/comments on the impacts and potential impacts to our campus caused by this increasingly popular and requested practice.		

P:\UFPB\AGENDA & MEMOS\2014 Agenda\Meeting 12-02-2014\#8 Chalking on Sidewalks.docx

<b>ITEM # 7</b>	<b>Update on Relocation EHHD Movement Science Lab (MSL) &amp; Movement Science Teaching Lab (MSTL) from Romney Hall</b>
-----------------	---

**PRESENTERS:**

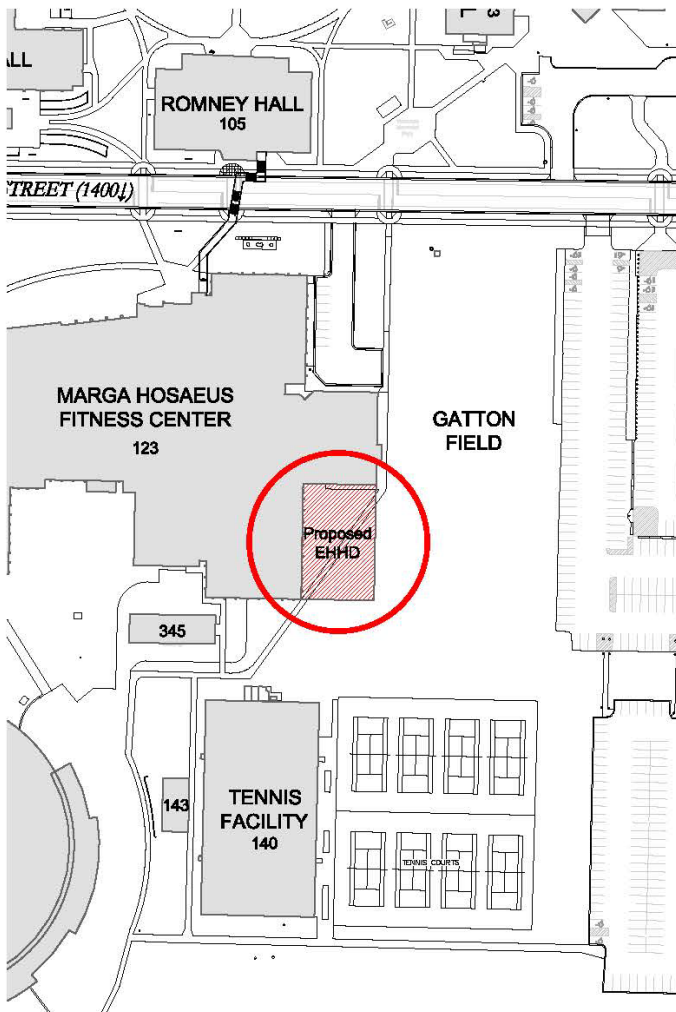
Darryl Curfman, CPDC Project Manager

<b>PROJECT PHASE:</b>	<b>PLANNING</b>	<b>X</b>	<b>SCHEMATIC</b>	<b>DESIGN DOCUMENTS</b>	<b>CONSTRUCTION DOCUMENTS</b>
-----------------------	-----------------	----------	------------------	-------------------------	-------------------------------

**VICINITY MAP:**

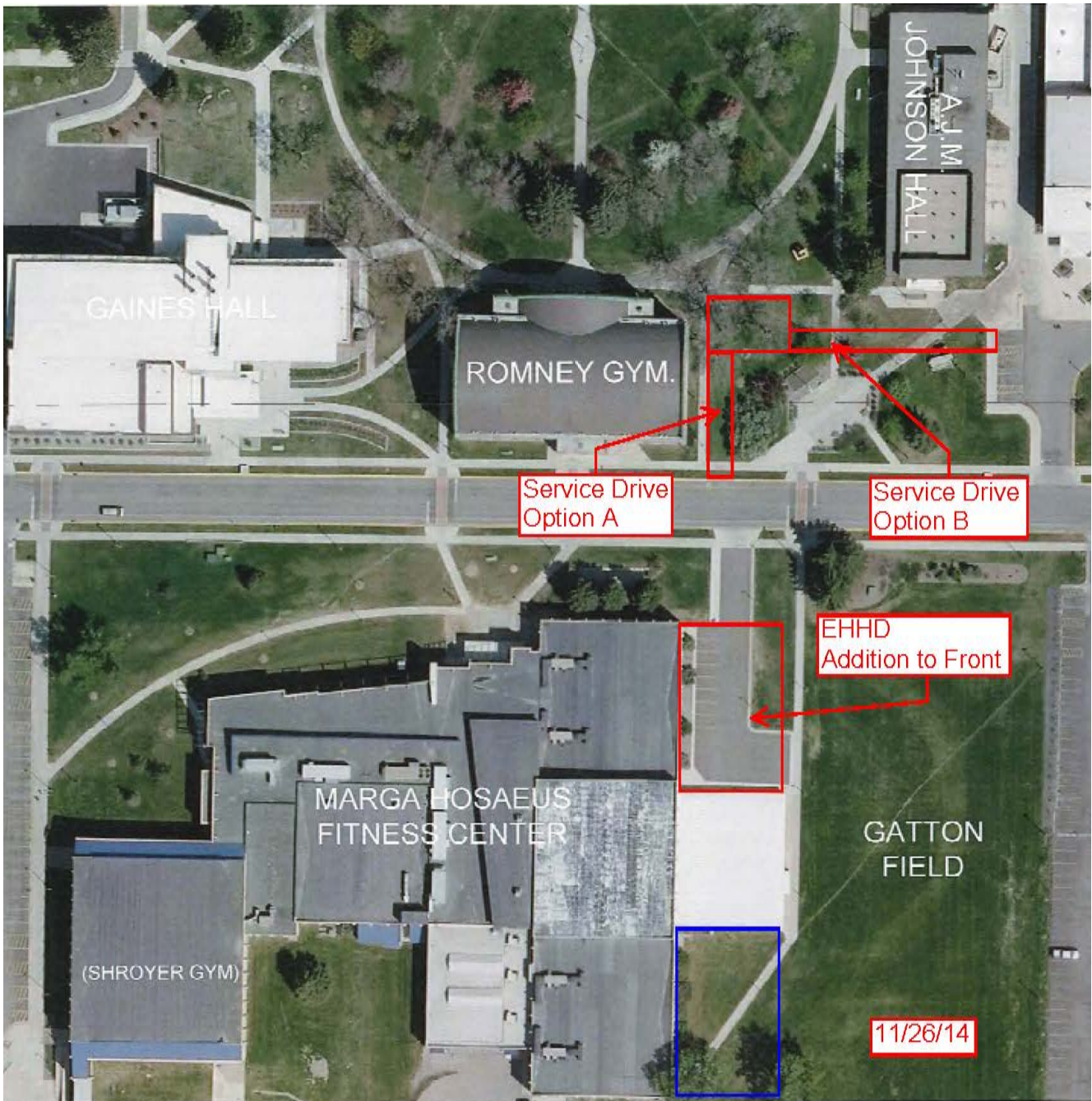
See Below

**STAFF COMMENTS:**



On October 21, 2014, UFPB was presented with the proposed addition to the south east corner of the Marga Hosaeus Fitness Center and recommended approval of this location to President Cruzado.

After further discussion, another option is being considered; this option is to place the addition on the north east corner of the Fitness Center and relocate the service drive on the north side of Grant St., east of Romney Hall.



COMPLIANCE:	YES	NO
MSU POLICIES	X	
COMMITTEE OR APPROPRIATE REVIEW	X	
MASTER PLAN	X	

**BOARD ACTION REQUIRED:**

**No action required; seeking input from UFPB.**