

MEMORANDUM

TO: University Facilities Planning Board: Susan Agre-Kippenhan - Chair, Walt Banziger - Vice Chair, Jim Becker, Kurt Blunck, Allyson Bristol, Jeff Butler, ASMSU President, Michael Everts, Joseph Fedock, Mandy Hansen, Jeff Jacobsen, Patricia Lane, Tom McCoy, Ed Mooney, Jim Rimpau, Craig Roloff, Tom Stump, Jim Thull, Kasey Welles – ASMSU, Allen Yarnell, Brenda York

FROM: Victoria Drummond, Associate Planner, Planning, Design & Construction

RE: **November 9, 2010**, meeting of the University Facilities Planning Board to be held in the **Facilities Meeting Quonset at 3:30 pm**

ITEM No. 1 – APPROVAL OF NOTES

Approval of the draft notes from the October 12, 2010.

ITEM No. 2 – EXECUTIVE COMMITTEE REPORT

Report on any current Executive Committee actions.

ITEM No. 3 – CONSENT AGENDA - None

ITEM No. 4 – RECOMMENDATION – Malone Gate Presenter – Dennis Raffensperger, Don McLaughlin

ITEM No. 5 – RECOMMENDATION – AJM Generator and Screen Presenter – Bill Mackin, Matt Faure

HORIZON ITEMS

- External Building Signage Policy
- Staging Discussion
- Seminar Materials
- Master Planning Issues
- Revisit and Update Policies
- HBO5 Amendment for lab Facility
- Smoking Problems

VCD/da

PC:

President Cruzado
ASMSU President

Jody Barney, College of Agriculture
Pat Chansley, Provost Office
Victoria Drummond, Facilities PDC
Cathy Conover, VP Communications

Diane Heck, Provost Office
Jennifer Joyce, Planning & CIO Office
Linda LaCrone, VP Research Office
Shari McCoy, Presidents Office
Becky McMillan, Auxiliary Services
Heidi Gagnon, VP Admin & Finance

Lisa Duffey, College of Agriculture
Robert Putzke, MSU Police
Charles Nelson, Registrar
Ashley Steen, Coll of Arts & Arch

**MEETING NOTES OF THE
UNIVERSITY FACILITIES PLANNING BOARD
October 12, 2010**

Members Present: Agre-Kippenhan - Chair, Banziger - Vice Chair, Becker, Boyd for Fedock, Butler, Jacobsen, LaCrone for McCoy, Lane, Lashaway for Roloff, Mooney, Rimpau, Thull, York

Members Absent: Blunck, Bristor/proxy, Everts/proxy, Hansen/proxy, Stump, Welles – ASMSU, Yarnell

Guests: Candace Mastel and Victoria Drummond, Facilities Planning, Design & Construction; Tate Chamberlin and Celia O'Connor, Public Art Committee

The University Facilities Planning Board met beginning at 3:30 pm to discuss the following:

ITEM No. 1 – Approval of Meeting Notes

Butler moved to approve the meeting notes from September 14, 2010. Thull seconded the motion. The meeting notes were unanimously approved.

ITEM No. 2 – Executive Committee Report – No actions to report

ITEM No. 3 – Consent Agenda - None

ITEM No. 4 – Recommendation – Avalaunch Event Signage

Candace Mastel introduced the proposal for the temporary event signage for Avalaunch. On November 11, 2010, through November 13, 2010, Chamberlin Productions will be teaming with ASMSU to present a three day series of educational features, movies, events and music venues to help unify education, culture, fashion and entertainment as it applies to safe and fun enjoyment in the mountains. The event will take place on the campus of MSU and throughout the Bozeman community.

Tate Chamberlin, of Chamberlin Productions, requested the use of two areas at the SUB for signage to be placed two weeks prior to the event and removed the Monday following the event. The area chosen for the signage is believed to be a central node on campus for students and the general public. The first location for the event signage would be at the west entrance to the SUB, on two vertical columns at the entry portico. Two vertically oriented banners made of vinyl would be affixed temporarily to the column without modifying/damaging the brick or structure. The second location would be the two windows above the south entry doors to the atrium. Horizontally configured signs would be affixed above the door in the window panes (photos attached). These signs would be constructed of a transparent and removable vinyl material that would allow views from the inside of the building to the outside. The signs will be installed on October 28, 2010, and removed on November 15, 2010. SCS Vinyl Works and Chamberlin Productions will perform the installation. Butch Damberger, the building manager, endorses the plan. It is not his intent to use these areas as a permanent location for marketing.

Thull made the motion to approve the Avalaunch event signage as proposed. Lane seconded the motion. The motion was unanimously approved with the proxy votes of Bristor and Everts.

ITEM No. 5 – Recommendation – Joint PAC and UFPB meeting to identify site location for Beethoven sculpture gift

Victoria Drummond introduced the recommendation. A vicinity map was displayed to show the three potential sites on campus for the location of the art work donated by the artist Jim Dolan and accepted by President Cruzado. The sculpture is approximately 12 feet tall, the base is 26 inches by 38.5 inches, it weighs 5,800 pounds and consists of a light-colored marble obelisk shaped base crowned with a metal bust of Ludwig Beethoven (drawing/photo attached).

The artist, staff from Facilities Services (FS) and Facilities Planning, Design and Construction (FPDC) scouted the campus for potential sites. Each of the following three sites, in no particular order, met the approval of the artist, FS (regarding maintenance considerations) and FPDC (regarding the Long Range Campus Development Plan and landscape planning).

- A triangle of lawn between Romney Gym and Gaines – Visible from Grant Street as a portal looking into campus; trees and shrubs provide an appealing backdrop; pedestrians can pass on either side.
- Corridor between Howard Hall and Cheever Hall – Backdrop of the south brick wall of Cheever Hall; out of the corridor area, Creative Arts District
- A triangle of lawn east of Danforth Chapel – Allows students to view it from different sides; visible from Centennial Mall

Drummond relayed comments received from individuals who could not attend the meeting:

- Building Supervisor Alan Leech – As the head of the Music Department, he would like to point out the obvious best location for the Beethoven sculpture would seem to be close to Howard Hall. He thinks that its presence would be welcomed in this place. He would suggest that the best site would be closer to Howard Hall on the Howard side of the sidewalk, not far from the building, but the site committee would have the best idea for the final location.
- Building Supervisor David Singel – He agreed with A. Leech that of the three locations that are being considered, the Creative Arts District between Cheever Hall and Howard Hall would be the best location.
- UFPB Committee Member Alyson Bristor – Proxy vote to approve the Beethoven location between Cheever Hall and Howard Hall because it was in the “Creative Arts District,” but she thinks the establishment of the sculpture on campus is key, so she is fine with any of the locations.
- UFPB Committee Member Michael Everts – Proxy vote to abstain. He was concerned about the scale of this specific piece of artwork; he felt it was monumental and monumental pieces of artwork would be more appropriately integrated with formal planning moves. He felt that at the Cheever site, the sculpture would be almost as high as the one story building. And at the Romney location, it would compete with the historic quality of the building itself. If it has to go on campus, it should be located on the lawn east of Danforth Chapel.
- UFPB/PAC Member Mandy Hansen talked to Staff Senate constituents and the consensus was that MSU’s limited sculpture sites are not best utilized with the placement of another sculpture by the same artist and felt that there should be more diversity and that it should have been reviewed by the PAC. She abstained from voting because she was uncomfortable that it didn’t go through the process that had been established by the PAC just this past year.
- PAC Member Nelleke Beltjens and Art Faculty abstained from voting because she believes that there needs to be more diverse sculpture on campus and she could not support this because it did not go through the voting process vetted with the PAC.
- PAC Member Josh DeWeese and Art Faculty was disappointed regarding this action; the decision short circuited the PAC review process. Regardless the merit of the proposed sculpture, the committee should have had some input in the decision to accept a public sculpture for the campus. Since the decision was already made, he felt that he could not support voting, so he abstained. Of the three, he felt the most appropriate would be the location east of Danforth Chapel.

Becker asked what was “short circuited?” Drummond explained that in 2009 UFPB reviewed a suggestion by the then UFPB Committee - Sculpture Committee to formalize bylaws. The bylaws with purpose and committee scope were written and presented to the UFPB; the Sculpture Committee suggested that the name change to be more universal and suggested Public Art Committee. UFPB approved bylaws and name change. The policy was developed and approved in May of 2010 that set out how procurement and gifts would be handled; which was followed with a set of procedures, also reviewed by UFPB and approved in July. The procedures established a form for anyone who wanted to submit a gift to the University. It also established a process for how public art gifts would be reviewed and vetted; established documentation to track materials, contacts and maintenance information; and an agreement that included liability disclaimers. In this particular case, the gift did not come to the PAC before it was accepted. It was accepted directly by President Cruzado and then sent to the PAC. That is why this meeting is a joint meeting with the PAC. Most recently, the bobcat sculpture in Alumni Plaza and the Walt Whitman sculpture did go through the process so that one recommendation to the President included review by PAC, UFPB and Commemorative Tributes Committee.

Drummond suggested that the forms still be filled out because it includes the name of the artist and details to be maintained in the inventory database along with the materials that were used. It also makes it clear that MSU owns the art gift.

PAC Member Celia O’Connor stated that a lot of members of PAC felt like they were overlooked and were only included today to rubber stamp. She asked the UFPB to consider whether they really want a PAC. The PAC spent the better part of a year and a half developing the policies only to find out that it doesn’t matter. She wants to be sure that liability is an issue. It is very important that once UFPB approves procedures that they be followed.

PAC Member Tate Chamberlin stated that the artist, Jim Dolan, knew the rules; he followed the rules with his first sculpture (Whitman) and Chamberlin finds it disrespectful that he didn’t follow them with this sculpture. Personally, Chamberlin doesn’t think Beethoven necessarily fits MSU.

Lashaway differed with Chamberlin. The members of the public are not held to MSU’s processes. The artist approached the President who accepted the sculpture. The issue is to transmit the concerns of PAC to the President.

The Chair stated, “The sculpture was accepted as a gift directly from the President who then asked UFPB/PAC to help facilitate its placement on campus. I have personally written to the President to outline what we were proposing for this

particular sculpture, but to also say we have an established committee and I would like an opportunity for her to engage with that to answer just the question that Celia asked, to say how we would like to go forward.” She recognized Jim’s generosity and acknowledged that this is the way MSU is acquiring sculptures and it is an unfortunate situation for MSU not to really procure art, but to only be in the position of graciously accepting or not accepting donations. She did want to recognize that there have been conversations about the hard work of the PAC and that the UFPB wants the committee’s involvement but also recognizes that we haven’t thoroughly used the processes that we have set up.

Lashaway remarked that there is another avenue that needs to be explored with the President – is there a possibility of creating some way to solicit and procure art in the future?

Drummond thanked the PAC and UFPB for process comments but asked UFPB/PAC to focus on the placement of the sculpture. There are three locations that were suggested to the UFPB. They all have merit. She then answered questions about the three sites and a discussion followed regarding the sites including:

In response to Becker question – if PAC leaned towards the Cheever/Howard or the Danforth site; that officially the PAC abstained. Mooney stated that he supported the Cheever/Howard site while the chair supported the Danforth site and opposed the Cheever area. Some members felt that Beethoven in front of Howard Hall was too obvious. Romney was the least favorite from a Facilities planning view point. Danforth has several resident units and the corridor near Hamilton Hall as well as a VIP parking area and Centennial Mall for exposure. Whichever area is chosen, it will be seen by those on campus and those not connected to MSU because it is 12 feet tall and can be seen from a public street. It was noted that the sculpture of Walt Whitman was linked to Wilson Hall, so it would follow suit to link Beethoven with Howard Hall. Banziger pointed out that the Tee Pee sculpture on loan from Dolan is on the Hannon Green. Butler recommended placing the sculpture against Cheever Hall facing Howard Hall because it is the taller building of the two; it would look out of place against a single story building.

Becker moved to accept the Howard/Cheever general vicinity, subject to the completion of the PAC donor agreement form. The Chair asked that it be placed as close to Howard Hall as possible. She believes the Music Department would welcome it being placed there, along with the fact that members of the PAC and some faculty in Cheever Hall are not as predisposed to it. Thull recommended a condition to the motion be added requiring the completion of the PAC donor agreement form. After a discussion, Becker withdrew his motion.

Butler noted that another item that comes out of the process when it is followed is who pays for the installation and maintenance, among other things. Lashaway stated that once MSU officially accepts the piece of art, it becomes a Facilities issue to maintain it and take care of it.

Mooney made the motion that the preferred site location for placement of the Beethoven sculpture gift to MSU be the general Cheever/Howard area, the specific location is to be worked out by Facilities and the Buildings Supervisors, and subject to the completion of the PAC donor agreement form. Becker seconded the motion.

Comments: Thull made the comment that he hopes the President understands that this is not a precedent that it would be approved after the fact. In the future, the guidelines of PAC must be followed.

The motion was approved with the affirmative recommendation of 13 yes: 3 abstain (Agre-Kippenhan, Everts, and Hansen) with the proxy votes of Bristol, Everts and Hansen.

Lashaway made the comment that Jim Dolan has challenged the University with the need for more art and he has been making efforts to provide that, and that is to be commended. There is a need to have different kinds of art. The challenge is to put the effort where the vision is and it is up to the University to try to respond to that challenge in ways that we think are appropriate to find additional art.

Chamberlin agreed with the challenge, and for the next meeting he proposed the Gallatin Art Crossing Program. All the sculptures on Main Street is a program funded for approximately \$5,000 per year. There are thirty-four sculptures that rotate every year.

Becker asked why the location was brought to UFPB since the process was circumvented.

Lashaway explained that we have a new President and a transition and the President is going about the discovery process of all the different processes in place. He didn’t think she was necessarily aware of all processes and she wasn’t afraid to make

a decision and so she did. There will be an opportunity to talk to the President and discover what her direction will be for these kinds of things and how she wants us to continue.

Jim Dolan stated that he was aware of some hard feelings. He went the same way with President Cruzado as he did with President Gamble. He went to them and asked them how to proceed. He was not trying to circumvent any committees along the way. His idea is to stimulate more sculpture on campus.

The Chair spoke for the committee saying what happened a little in between is that during the Walt Whitman donation it sparked a whole set of policies and conversations that took time. She applauded Dolan's patience having to go through that sort of process with the committee with the Whitman sculpture. The President is new, but she did sign the policy after being here for about a month. She probably didn't know how to refer it; she was very enthusiastic about accepting it and turned it over to Facilities for the next step. There isn't anyone who isn't grateful for the donations, because Dolan is challenging MSU find a way to acquire more public art for the campus.

This meeting was adjourned at 4:30 p.m.

VCD/da

PC:

President Cruzado
ASMSU President
Jody Barney, College of Agriculture
Pat Chansley, Provost Office
Victoria Drummond, Facilities PDC
Cathy Conover, VP Communications

Diane Heck, Provost Office
Jennifer Joyce, Planning & CIO Office
Linda LaCrone, VP Research Office
Shari McCoy, Presidents Office
Becky McMillan, Auxiliary Services
Heidi Gagnon, VP Admin & Finance

Lisa Duffey, College of Agriculture
Robert Putzke, MSU Police
Chuck Nelson, Registrar
Ashley Steen, Coll of Arts & Arch

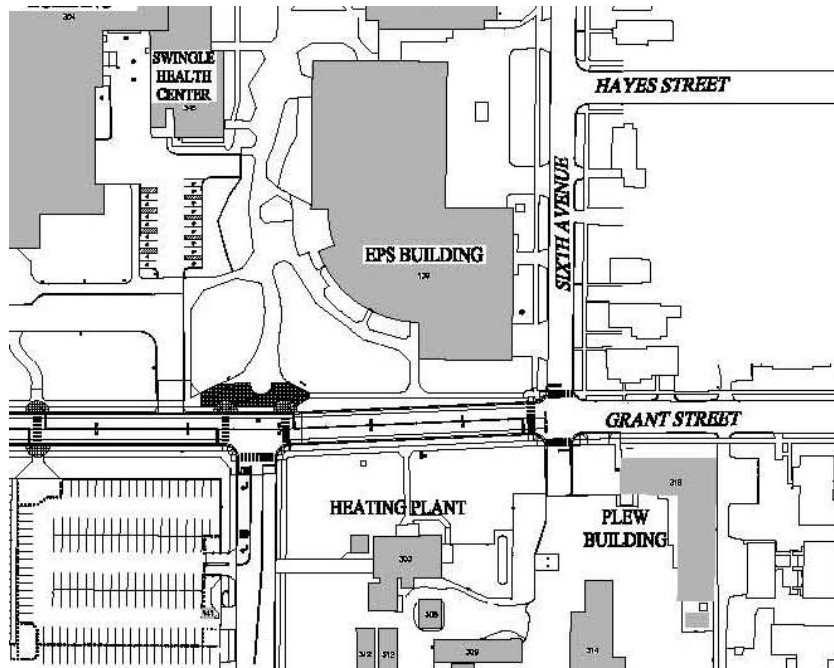
ITEM # 4	Malone Memorial Plaza
-----------------	------------------------------

PRESENTERS:

Introduction: Dennis Raffensperger, MSU University Architect
 Project presentation: Don McLaughlin, Place Architecture

PROJECT PHASE:	PLANNING	SCHEMATIC	DESIGN DOCUMENTS	X	CONSTRUCTION DOCUMENTS
-----------------------	-----------------	------------------	-------------------------	----------	-------------------------------

VICINITY MAP:



STAFF COMMENTS:

In September of 2010 a project to create a new public space, possibly an entry to the Centennial Mall precinct, in honor of Michael Malone, president of MSU from 1990-1999, was created. Place Architecture, the design architects for Centennial Mall, was appointed as designer for the project and presented several design alternatives to the review committee. The schematic design submittals are included as attachments, with the design being presented for approval being the scheme at the top of the page of three designs.

The Malone Memorial site is located to the north and primarily to the east of the Wind Arc sculpture by Gary Bates. Providing pathways and sitting areas gently carved into the east berm, a memorial area has been created that provides quotations in the stone descriptors, contemplative areas, and good views of other campus icons including the Heating Plant by Fred Willson, the Romney Gym, and the Cupola on Montana Hall.

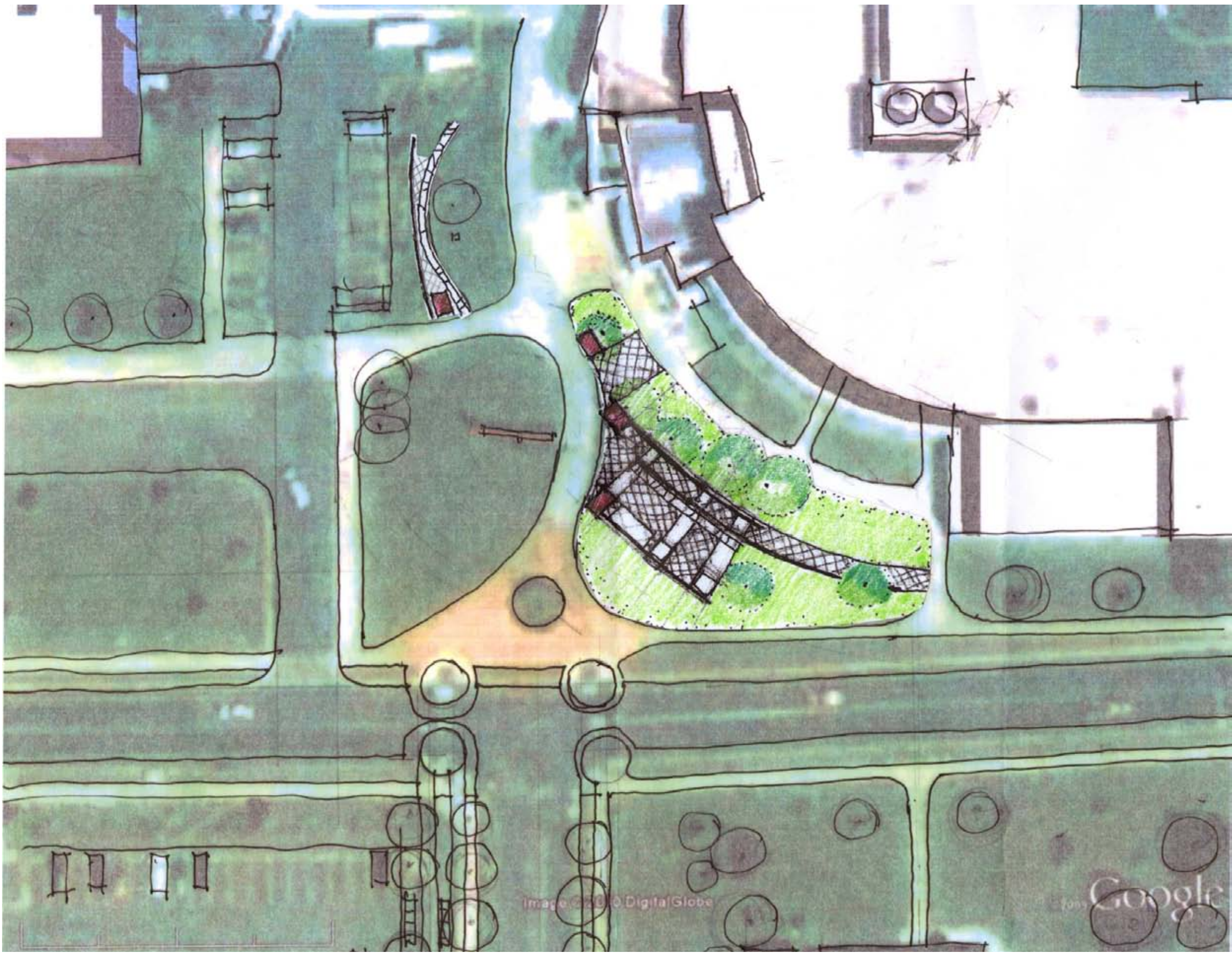
The carved spaces are defined with flowing metal retaining walls matching the materials used in the Wind Arc – Cor-Ten rusting steel and stainless steel. Some definition is provided by stone walls matching the wall in front of the EPS building – this wall is incorporated into the overall entry system to better define the Malone Memorial area. Paving is unique to smaller areas within the design to define smaller more intimate spaces. Existing plant material has been carefully integrated into the design with special details to prevent damage to the root systems. Additional landscaping will be included to delineate the project.

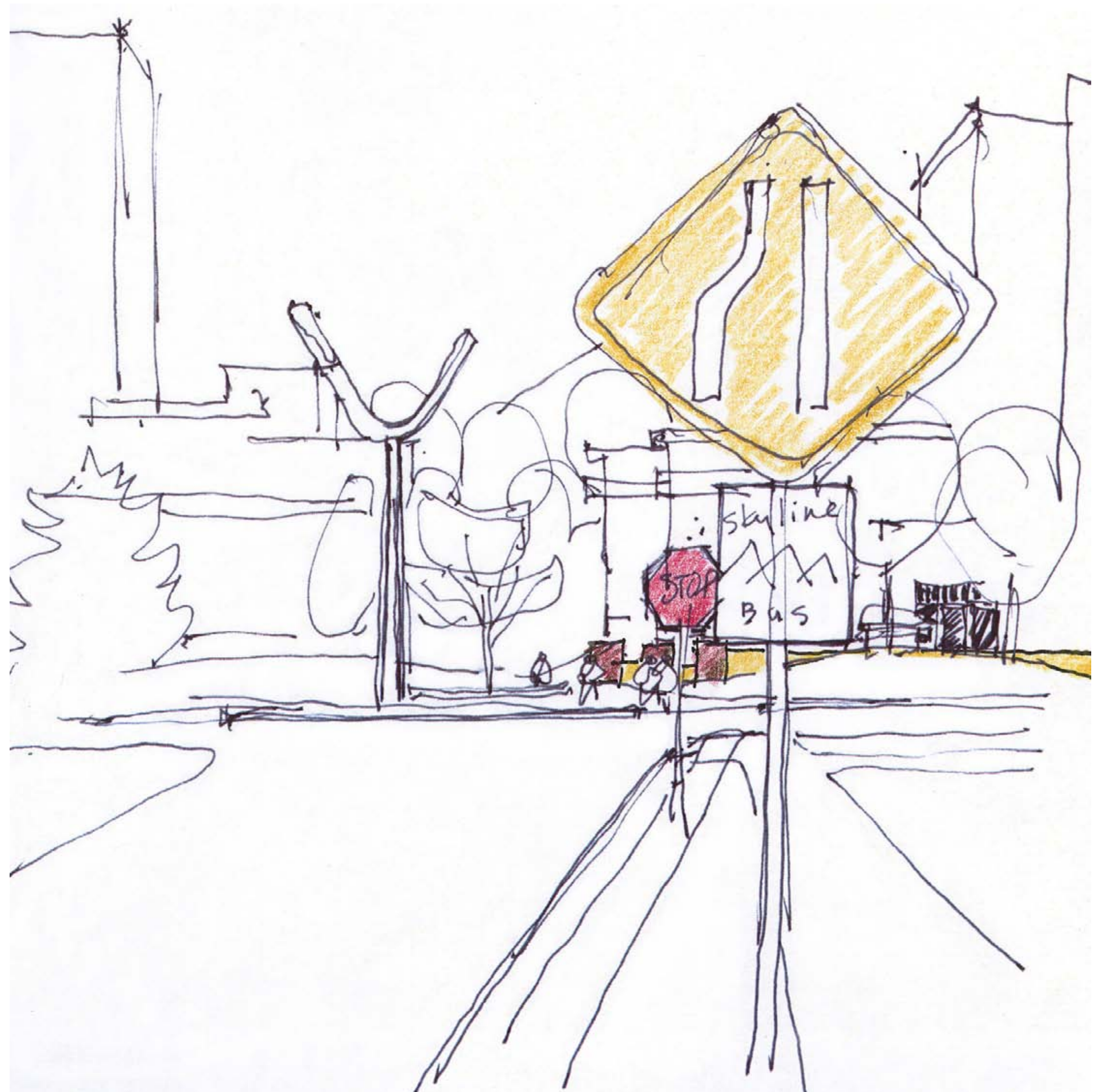
Free standing stones are grouped into the center of the Memorial area to provide quotations and inspiration from Mike Malone to future generations of students. These will be developed with the academic community which is part of the committee working on this project for Montana State University.

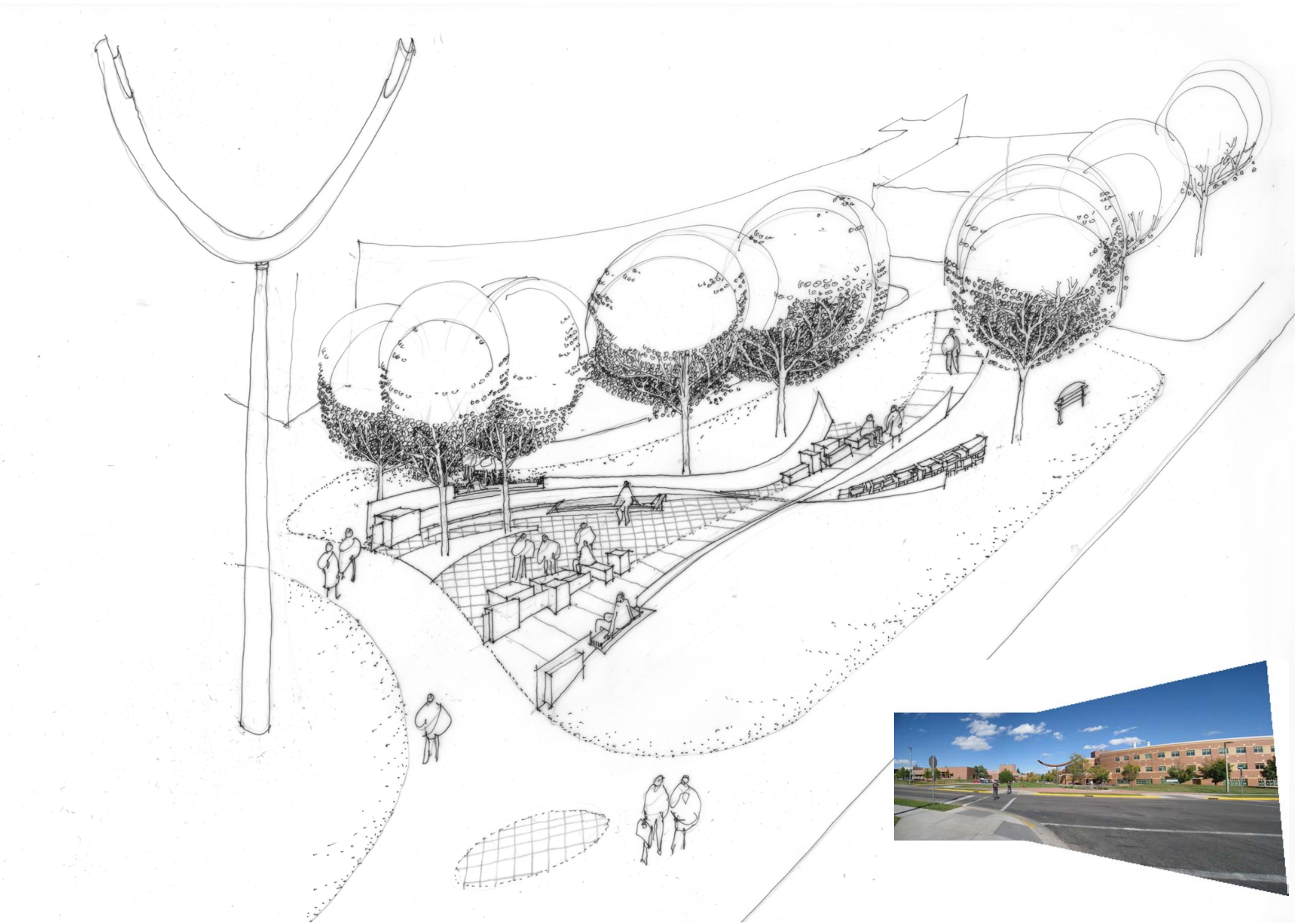
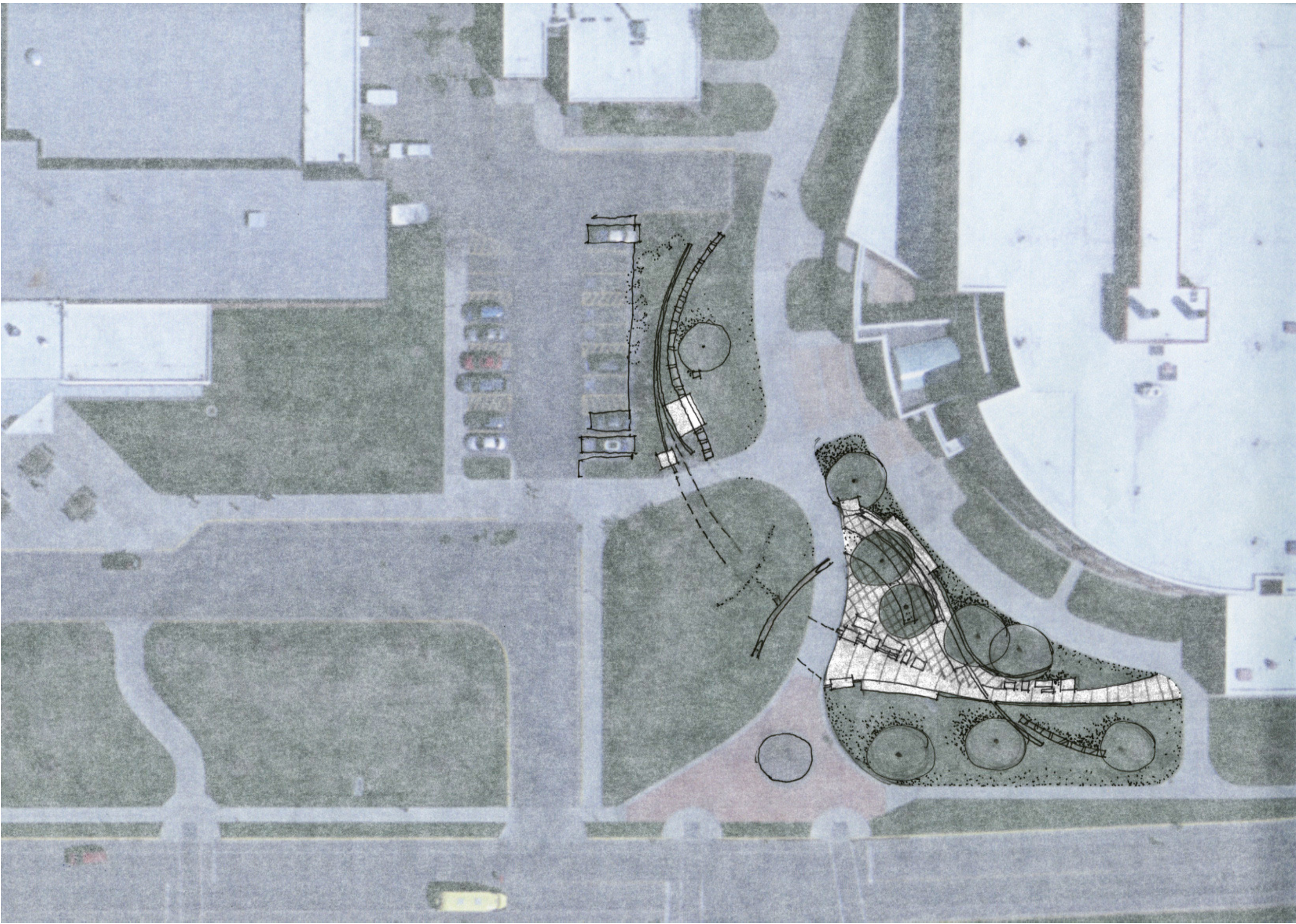
Construction is slated for March of 2011 ending in August 2011.

COMPLIANCE:	YES	NO
MSU POLICIES	X	
COMMITTEE OR APPROPRIATE REVIEW	X	
MASTER PLAN	X	
BOARD ACTION REQUIRED:		
The board is requested to consider and approve the location and design of the Malone Memorial Plaza as presented. FPDC will return to UFPB at a future point with an informational presentation on final design, details and materials.		

P:\UFPB\FORMS\UFPB Staff Report Form 2010.docx







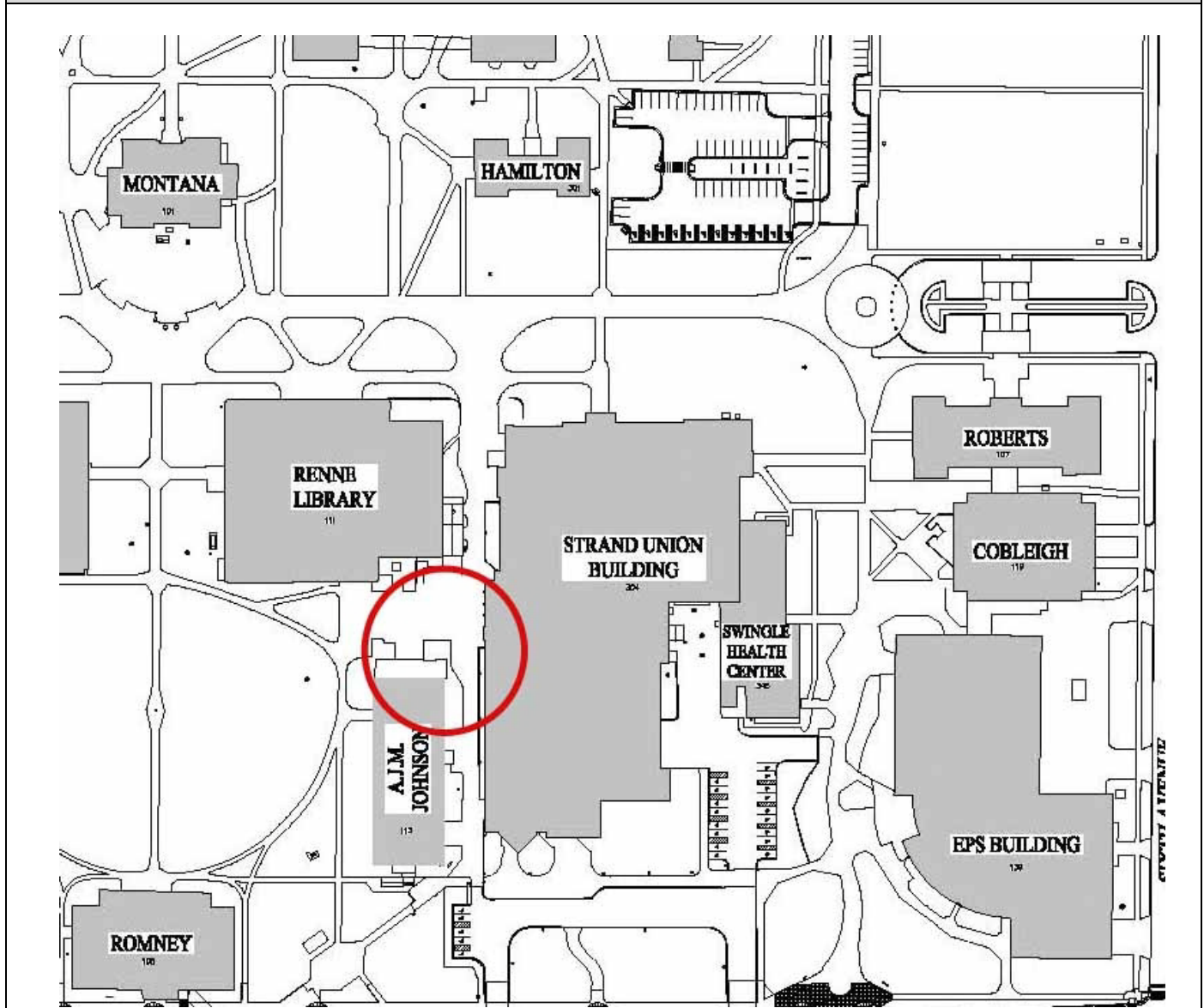
ITEM # 5	AJM Johnson Generator and Screen
-----------------	-----------------------------------------

PRESENTERS:

Bill Mackin, MSU Project Manager
 Matt Faure, Architectural Consultant to Access Consulting

PROJECT PHASE:	PLANNING	X	SCHEMATIC	X	DESIGN DOCUMENTS	CONSTRUCTION DOCUMENTS
-----------------------	-----------------	----------	------------------	----------	-------------------------	-------------------------------

VICINITY MAP:



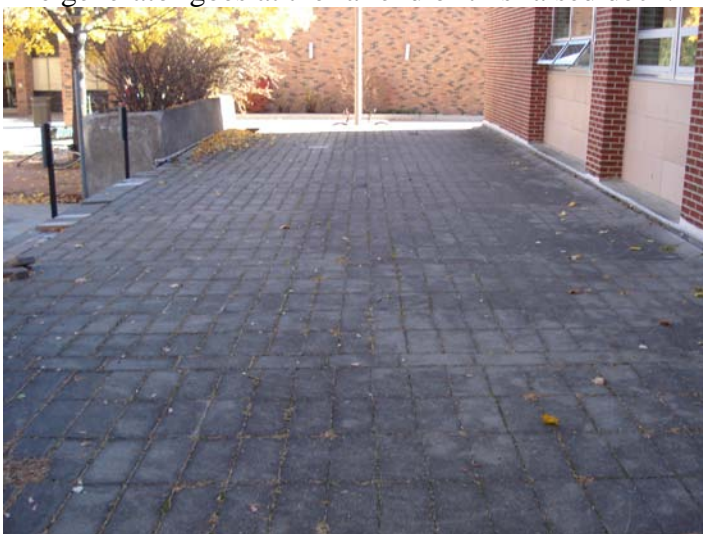
STAFF COMMENTS:

The Information Technology Center at Montana State University is placing a Data Center with state of the art racking for computer server equipment in Room 22 AJM Johnson Hall. This server equipment serves as essential backup for the IT Center in Renne. In the event of a power failure to the building data could be damaged in as little as 11 minutes. Therefore an emergency generator is an essential part of this project. The preferred location of the generator and the associated screen enclosure is at the northeast corner of the building. On the north end of the building the generator and screen will be hidden to a great extent from the courtyard area behind the planters and trees that already exist and which could be enhanced. The generator will be adjacent to the brick portion of the building only, and will not block any windows.

EXISTING CONDITIONS The generator goes behind the planter and trees in this photo:



The generator goes at the far end of this raised deck.



PROPOSED SCREEN ENCLOSURE

At the northeast corner of AJMJ



SIMILAR SCREENED GENERATOR AT VISCOM

A similar generator screen is located at the north end of the visual communications building.



OTHER LOCATIONS CONSIDERED

Other locations were considered for the generator and rejected.

1. Placing the generator on the roof posed numerous problems including lack of space, refueling and maintenance issues, vibration and other structural concerns.
2. The south end of the building was considered, but it is a much more public area, subject to view from both Grant Street and the Romney oval. It was felt that a sizable enclosure at the south end would be more obtrusive for the building and campus than at either the east side or north end.
3. The east side of the building presented concerns for screening in such a public space; sound reduction in the corridor tunnel created by AJMJ and the Strand Union; and finally exhaust venting due to the presence of operable windows. The only generator size that fit on the east side, in the limited space available, was nearly ten feet tall and encroached on windows.

ALTERNATIVE SOLUTION CONSIDERED

One alternative to the fixed generator would be to store a temporary trailer generator at an off -site location which could then be transported to AJMJ and connected to the building power system in an emergency. The requirement to have the data system powered up in 10 to 30 minutes makes this alternative impractical.

LONG TERM SOLUTION

The long term utility plan for the university is to have a central generator and/or satellite generators to feed emergency power to buildings like AJM Johnson. The implementation of that plan may be up to ten years in the future. At that time the emergency generator could be removed.

COMPLIANCE:	YES	NO
MSU POLICIES	X	
COMMITTEE OR APPROPRIATE REVIEW	UNKNOWN	
MASTER PLAN		X
BOARD ACTION REQUIRED:		
Recommend preferred site location for the placement of an emergency generator and associated screening		

P:\UFPB\FORMS\UFPB Staff Report Form 2010.docx